

VORTAC DIK <b>112.9</b> Chan <b>76</b>	APP CRS <b>183°</b>	Rwy ldg TDZE Apt Elev <b>2592</b>	<b>N/A</b> <b>N/A</b>
--	------------------------	--	--------------------------

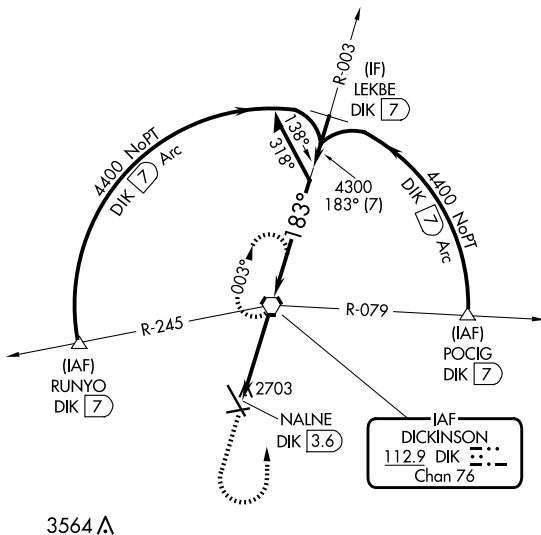
**VOR-A**

DICKINSON/THEODORE ROOSEVELT RGNL (DIK)

**⚠** When local altimeter setting not received, use Bowman altimeter setting and increase all MDAs 280 feet, increase Circling Cat C visibility 3/4 SM, Cat D visibility 1 SM.

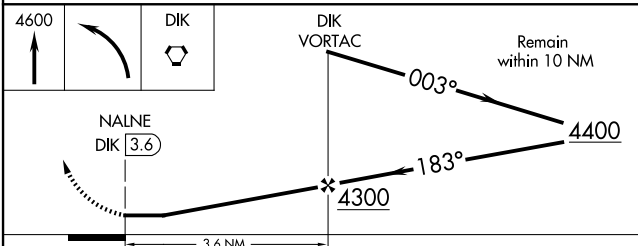
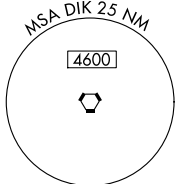
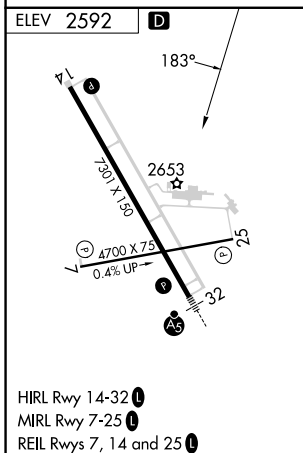
MISSED APPROACH: Climb to 4600 then turn left direct DIK VORTAC and hold.

ASOS <b>118.375</b>	MINNEAPOLIS CENTER <b>124.25 236.825</b>	UNICOM <b>123.0 (CTAF) 0</b>
------------------------	---	---------------------------------



NC-1, 23 JAN 2025 to 20 FEB 2025

NC-1, 23 JAN 2025 to 20 FEB 2025



FAF to MAP 3.6 NM					CATEGORY	A	B	C	D
Knots	60	90	120	150	180	3080-1 488 (500-1)	3100-1 508 (600-1)	3120-1½ 528 (600-1½)	3220-2 628 (700-2)
Min:Sec	3:36	2:24	1:48	1:26	1:12	<b>CIRCLING</b>			

DICKINSON, NORTH DAKOTA  
Amdt 6A 23APR20

DICKINSON/THEODORE ROOSEVELT RGNL (DIK)  
46°48'N-102°48'W

**VOR-A**