

APP CRS	Rwy Idg	4347
032°	TDZE	1972
	Apt Elev	1987

RNAV (GPS) RWY 5

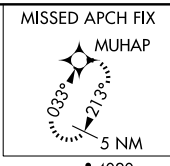
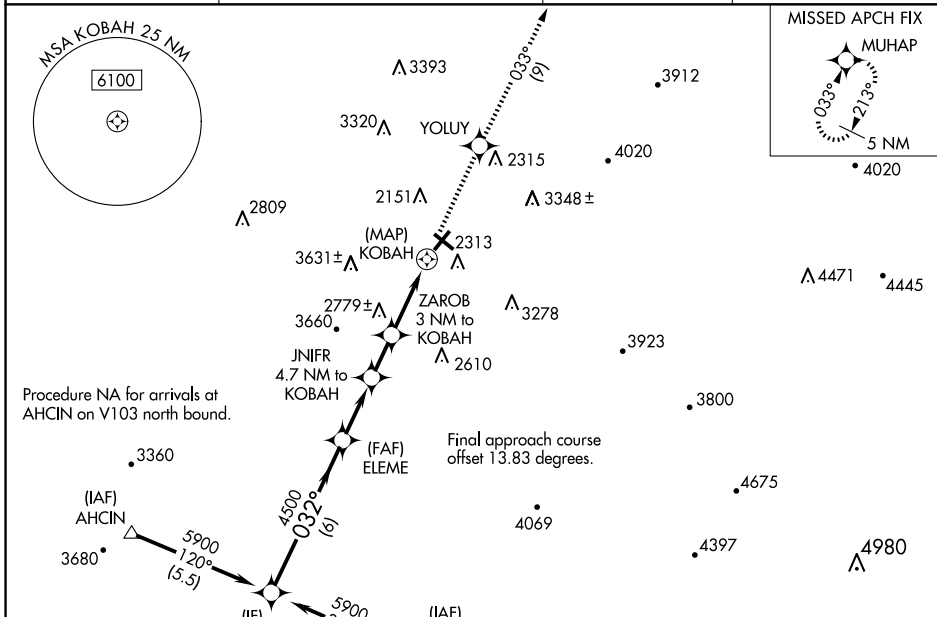
ELKINS/RANDOLPH COUNTY (JENNINGS RANDOLPH FLD) (EKN)

RNP APCH.

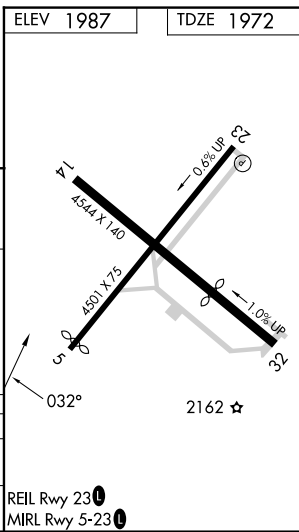
⚠ Circling Rwy 14, 23, 32 NA at night. When local altimeter setting not received, use Buckhannon altimeter setting and increase all MDA 100 feet.
⚠ Straight-in minimums NA when using Buckhannon altimeter setting.
⚠ Rwy 5 helicopter visibility reduction below 3/4 SM NA.

MISSED APPROACH: Climb to 5500 direct YOLUY and on track 033° to MUHAP and hold.

ASOS 119.275	CLARKSBURG APP CON ★ 121.15 284.65	CTAF 123.6	122.9 0
------------------------	--	----------------------	----------------



ELEV 1987	TDZE 1972
-----------	-----------



* 3800 when using Buckhannon altimeter setting.	5500	YOLUY	tr	MUHAP
** 3460 when using Buckhannon altimeter setting.			033°	
DOFAD	ELEM	JNIFR 4.7 NM to KOBAH	ZAROB 3 NM to KOBAH	KOBAH
5900	4500	*3700	**3360	
			3.62°	TCH 50
				2162 ☆

CATEGORY	A	B	C	D
LNVA MDA	3040-1 1/4 1068 (1100-1 1/4)	3040-1 1/2 1068 (1100-1 1/2)	3040-3 1068 (1100-3)	NA
CIRCLING	3040-1 1/4 1053 (1100-1 1/4)	3140-1 1/2 1153 (1200-1 1/2)	3720-3 1733 (1800-3)	4020-3 2033 (2100-3)

NE-4, 23 JAN 2025 to 20 FEB 2025

NE-4, 23 JAN 2025 to 20 FEB 2025