

HSKNS ONE ARRIVAL (RNAV)

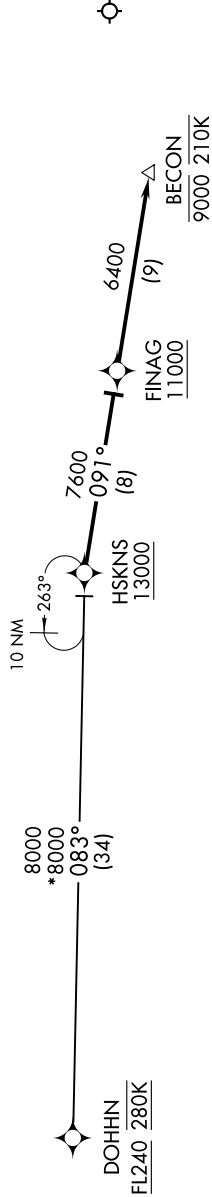
SC-3, 23 JAN 2025 to 20 FEB 2025

ARRIVAL ROUTE DESCRIPTION

DOHHN TRANSITION (DOHHN.HSKNS1)

LANDING RWY 4: From HSKNS on track 091° to FINAG, cross FINAG at or above 11000, then on track 091° to BECON, cross BECON at 9000 or 210K, expect RNAV (RNP) approach or RADAR vectors to final approach course.

EL PASO D-ATIS
120.0 254.3
EL PASO APP CON
124.25 298.85
ALBUQUERQUE CENTER
135.875 292.15



- NOTE: RADAR required.
- NOTE: RNAV 1.
- NOTE: DME/DME/IRU or GPS required.
- NOTE: Turbojet aircraft only.
- NOTE: For Non-RNP aircraft, expect RADAR vectors to final approach course.
- NOTE: Expect RNP approach clearance or RADAR vectors to final approach prior to BECON.

NOTE: Chart not to scale.

HSKNS ONE ARRIVAL (RNAV)

SC-3, 23 JAN 2025 to 20 FEB 2025