

LOC/DME I-ETF <b>111.5</b> Chan <b>52</b>	APP CRS <b>042°</b>	Rwy Idg TDZE <b>3923</b> Apt Elev <b>3962</b>	<b>12020</b>
---	------------------------	---	--------------

# LOC/DME RWY 4

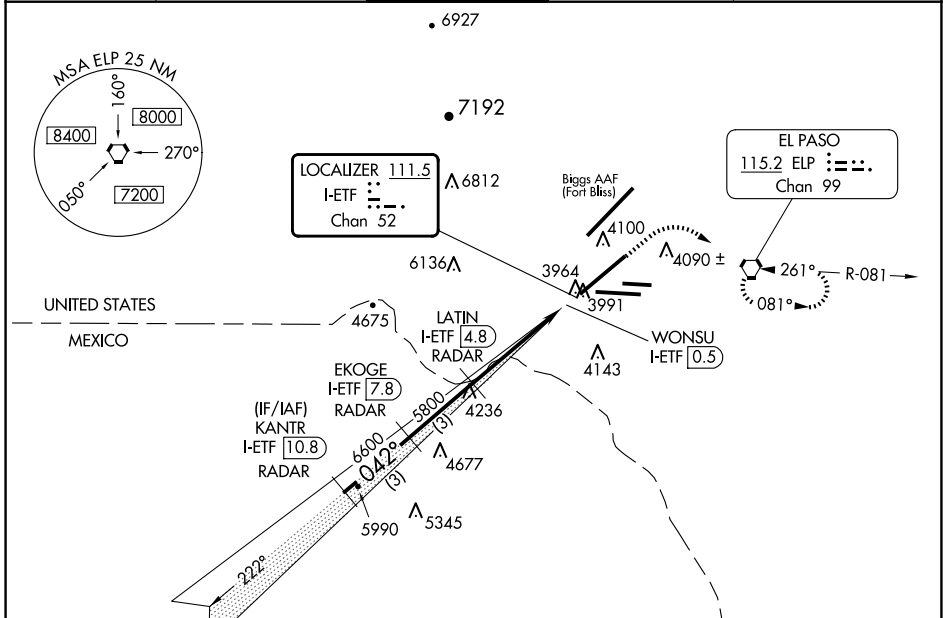
EL PASO INTL (ELP)

RADAR required for procedure entry.

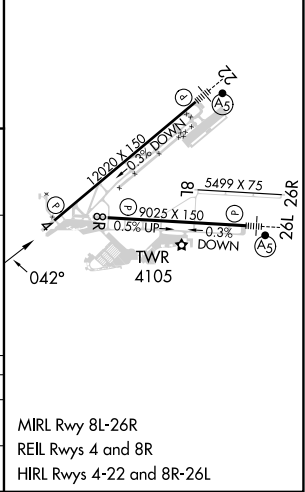
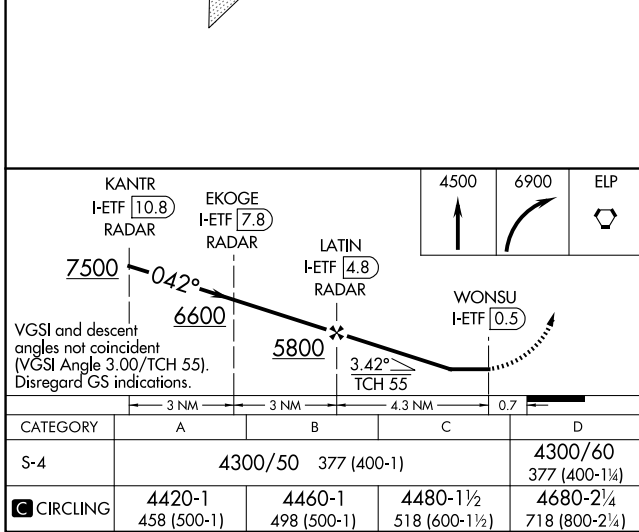
**ASR** Circling NA for Cat D north of Rwy 26R and northwest of Rwy 4.

**MISSED APPROACH:** Climb to 4500 then climbing right turn to 6900 direct ELP VORTAC and hold, continue climb-in-hold to 6900.

D-ATIS <b>120.0 254.3</b>	EL PASO APP CON <b>124.25 296.85</b>	EL PASO TOWER <b>118.3 239.275</b>	GND CON <b>121.9 348.6</b>	CLNC DEL <b>125.0 379.1</b>
------------------------------	---	---------------------------------------	-------------------------------	--------------------------------



ELEV 3962	<b>D</b> TDZE 3923
-----------	--------------------



CATEGORY	A	B	C	D
S-4	4300/50	377 (400-1)		4300/60 377 (400-1¼)
<b>C</b> CIRCLING	4420-1 458 (500-1)	4460-1 498 (500-1)	4480-1½ 518 (600-1½)	4680-2¼ 718 (800-2¼)

MIRL Rwy 8L-26R  
REIL Rwy 4 and 8R  
HIRL Rwy 4-22 and 8R-26L

SC-3, 23 JAN 2025 to 20 FEB 2025

SC-3, 23 JAN 2025 to 20 FEB 2025