

**(MOLLY.MOLLY5) 20310**  
**MOLLY FIVE ARRIVAL (RNAV)**

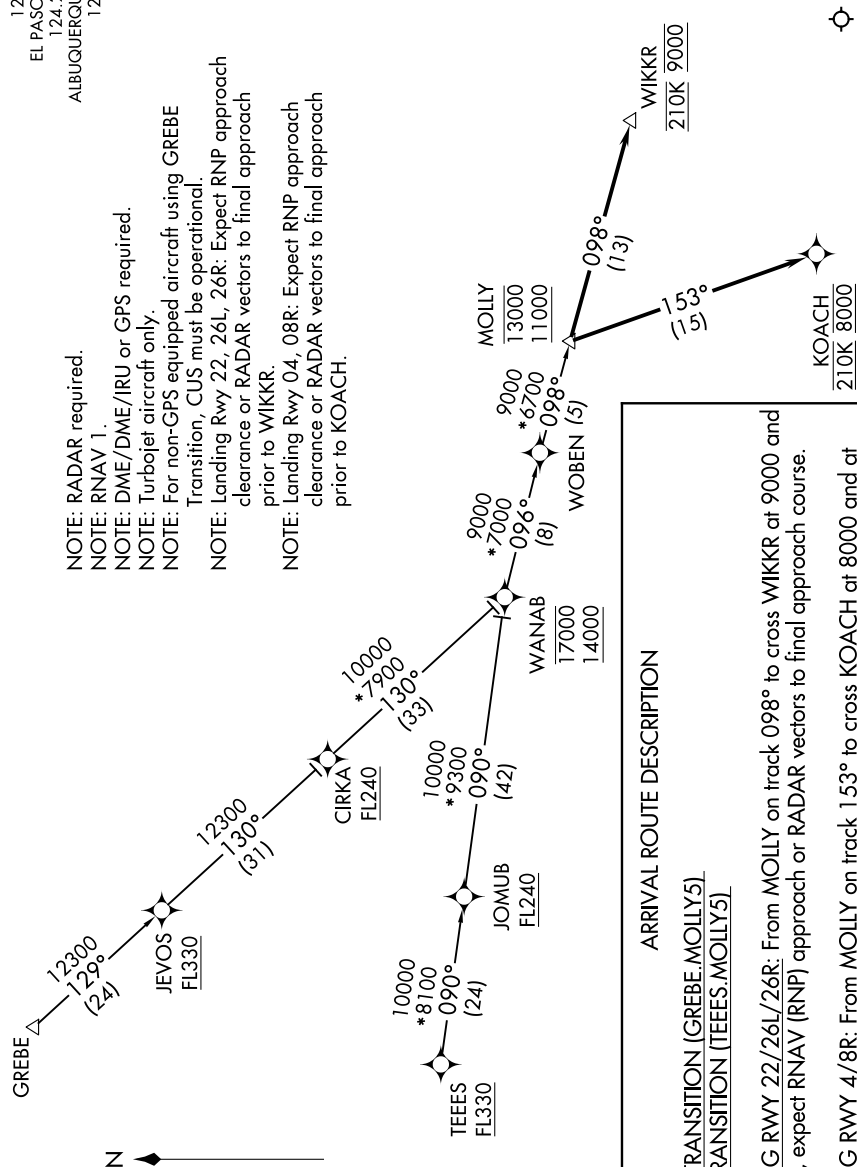
AL-134 (FAA)

EL PASO INTL (ELP)  
 EL PASO, TEXAS

SC-3, 23 JAN 2025 to 20 FEB 2025

D-ATIS  
 120.0 254.3  
 EL PASO APP CON  
 124.25 298.85  
 ALBUQUERQUE CENTER  
 128.2 285.5

- NOTE: RADAR required.  
 NOTE: RNAV 1.  
 NOTE: DME/DME/IRU or GPS required.  
 NOTE: Turbojet aircraft only.  
 NOTE: For non-GPS equipped aircraft using GREBE Transition, CUS must be operational.  
 NOTE: Landing Rwy 22, 26L, 26R: Expect RNP approach clearance or RADAR vectors to final approach prior to WIKKR.  
 NOTE: Landing Rwy 04, 08R: Expect RNP approach clearance or RADAR vectors to final approach prior to KOACH.



**ARRIVAL ROUTE DESCRIPTION**

GREBE TRANSITION (GREBE.MOLLY5)  
TEES TRANSITION (TEES.MOLLY5)

LANDING RWY 22/26L/26R: From MOLLY on track 098° to cross WIKKR at 9000 and at 210K, expect RNAV (RNP) approach or RADAR vectors to final approach course.

LANDING RWY 4/8R: From MOLLY on track 153° to cross KOACH at 8000 and at 210K, expect RNAV (RNP) approach or RADAR vectors to final approach course.

SC-3, 23 JAN 2025 to 20 FEB 2025

**MOLLY FIVE ARRIVAL (RNAV)**  
**(MOLLY.MOLLY5) 05NOV20**

EL PASO, TEXAS  
 EL PASO INTL (ELP)