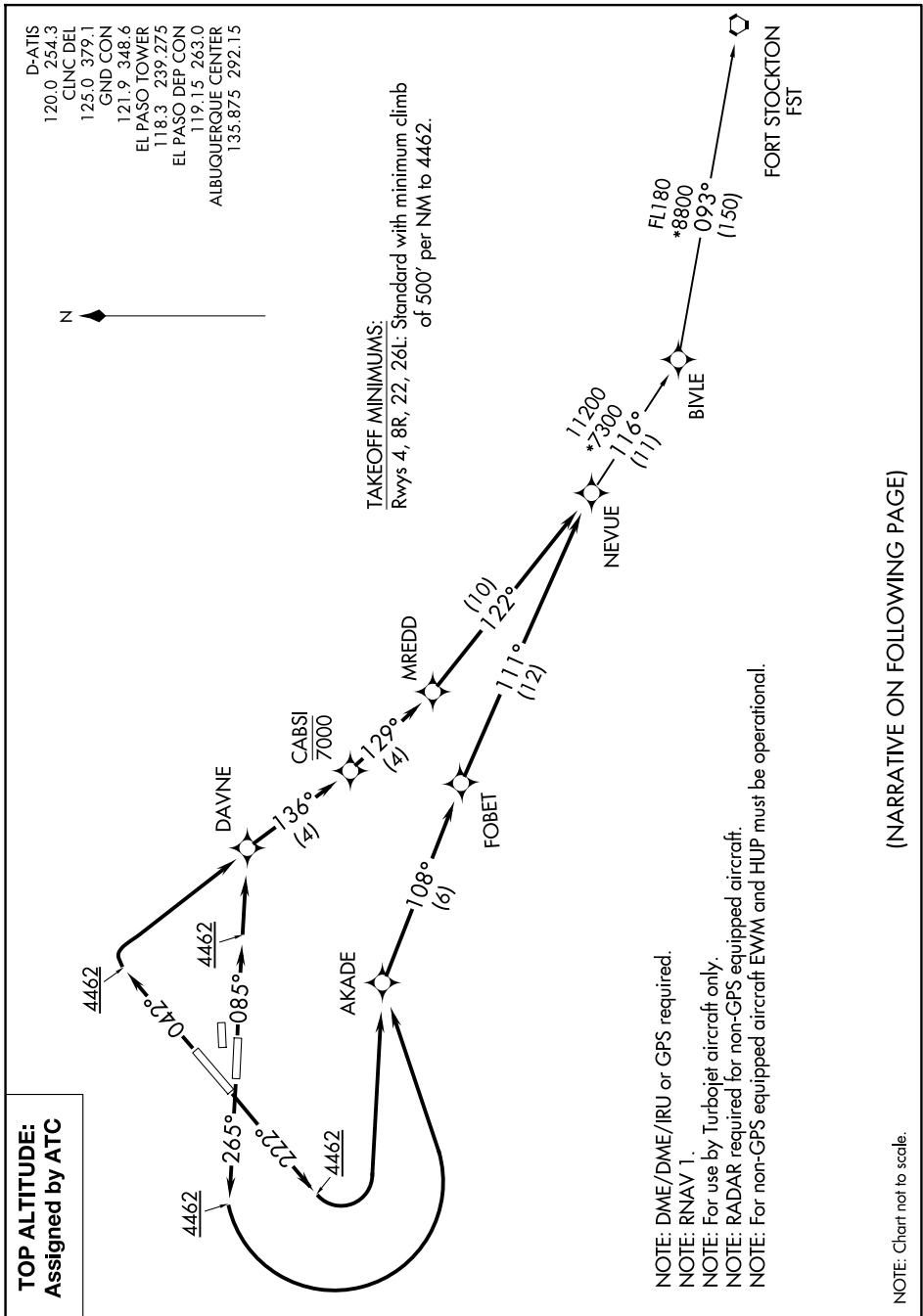


# NEVUE THREE DEPARTURE(RNAV)



**TOP ALTITUDE:**  
Assigned by ATC

**TAKEOFF MINIMUMS:**

Rwys 4, 8R, 22, 26L: Standard with minimum climb of 500' per NM to 4462.

NOTE: DME/DME/IRU or GPS required.

NOTE: RNAV 1.

NOTE: For use by Turbojet aircraft only.

NOTE: RADAR required for non-GPS equipped aircraft.

NOTE: For non-GPS equipped aircraft EWM and HUP must be operational.

NOTE: Chart not to scale.

(NARRATIVE ON FOLLOWING PAGE)