

WAAS CH <b>78244</b> <b>W22A</b>	APP CRS <b>222°</b>	Rwy Idg TDZE Apt Elev	<b>12020</b> <b>3950</b> <b>3962</b>
--	------------------------	-----------------------------	--

# RNAV (GPS) Y RWY 22

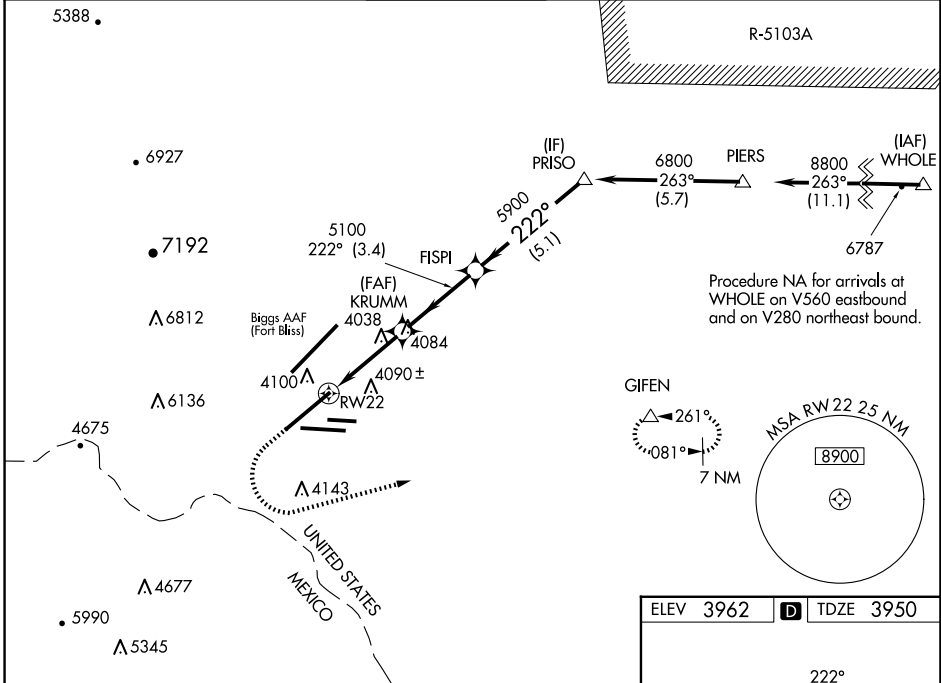
EL PASO INTL (ELP)

RNP APCH - GPS.

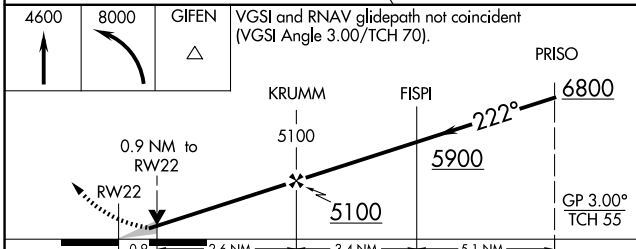
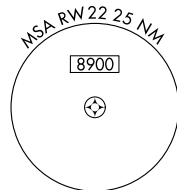
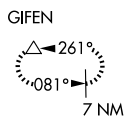
**ASR** Circling NA for Cat D north of Rwy 26R and northwest of Rwy 4. For uncompensated Baro-VNAV systems, LNAV/VNAV NA below -5°C or above 54°C. For inop ALS increase LNAV/VNAV Cats A/B/C visibility to RVR 4000, Cat D visibility to RVR 4500 and LNAV Cat C/D visibility to RVR 5500.

**MALS** MISSED APPROACH: Climb to 4600 then climbing left turn to 8000 direct GIFEN and hold, continue climb-in-hold to 8000.

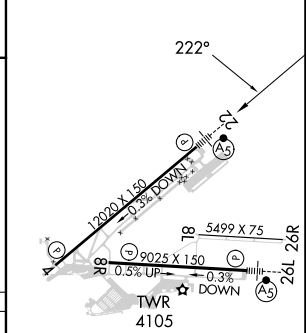
D-ATIS <b>120.0 254.3</b>	EL PASO APP CON <b>124.25 298.85</b>	<b>EL PASO TOWER</b> <b>118.3 239.275</b>	GND CON <b>121.9 348.6</b>	CLNC DEL <b>125.0 379.1</b>
------------------------------	---	--	-------------------------------	--------------------------------



Procedure NA for arrivals at WHOLE on V560 eastbound and on V280 northeast bound.



ELEV 3962	<b>D</b> TDZE 3950
-----------	--------------------



CATEGORY	A	B	C	D
LPV DA	4150/24		200 (200-½)	
LNAV/VNAV DA	4200/24		250 (300-½)	
LNAV MDA	4300/24	350 (400-½)	4300/30	350 (400-¾)
<b>C</b> CIRCLING	4420-1 458 (500-1)	4440-1 478 (500-1)	4480-1½ 518 (600-1½)	4680-2¼ 718 (800-2¼)

MIRL Rwy 8L-26R  
REIL Rwys 4 and 8R  
HIRL Rwys 4-22 and 8R-26L

SC-3, 23 JAN 2025 to 20 FEB 2025

SC-3, 23 JAN 2025 to 20 FEB 2025