

ENID, OKLAHOMA

# ILS or LOC RWY 35L

VANCE AFB (KEND)

LOC I-JUS <b>111.55</b>	APCH CRS <b>355°</b>	Rwy Idg <b>9217</b>
		TDZE <b>1307</b>
		Arprt Elev <b>1307</b>

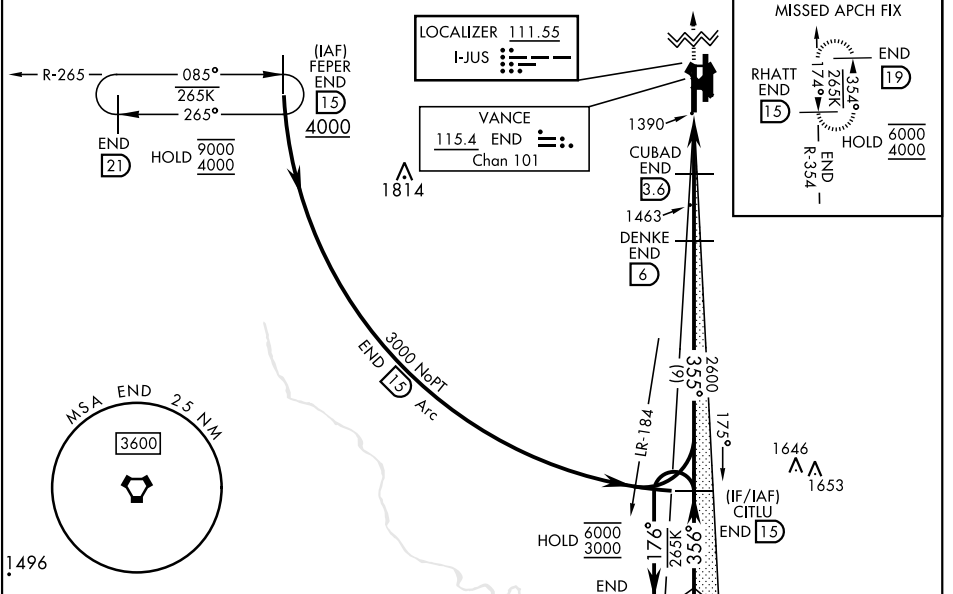
[USAF]

▼ \*When ALS inop, increase vis to 1 mile.  
 \*\*When ALS inop, increase CAT AB vis to 1 mile;  
 CAT CDE vis to 1½ mile.



MISSED APPROACH: Climb to 4000, intercept END VORTAC R-354 to RHATT and hold.

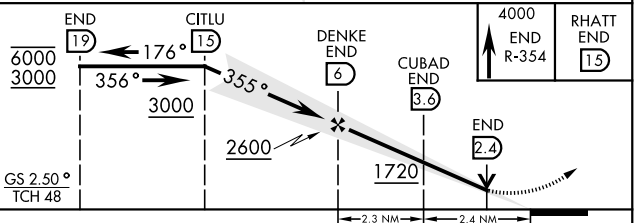
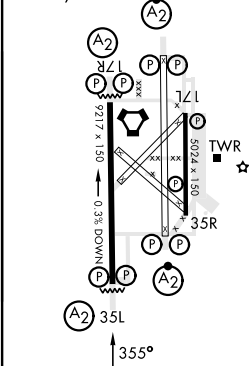
ATIS ★ <b>115.4 263.15</b>	APP CON <b>125.45 388.2 EAST</b> <b>126.75 346.325 WEST</b>	TOWER ★ <b>124.05 259.1</b>	GND CON <b>121.675 289.4</b>	CLNC DEL <b>225.4</b>
-------------------------------	---	--------------------------------	---------------------------------	--------------------------



EMERG SAFE ALT 100 NM 4500

ELEV 1307	TDZE 1307
-----------	-----------

HIRL Rwy 17C-35C, 17R-35L  
 MIRL Rwy 17L-35R  
 REIL Rwy 17L-35R



CATEGORY	A	B	C	D	E
S-ILS 35L	1507-¾		200	(200-¾)	
S-LOC 35L*	1660-¾		353	(400-¾)	
<input checked="" type="checkbox"/> CIRCLING	1760-1 453 (500-1)	1800-1½ 493 (500-1½)	1900-2 593 (600-2)	1940-2½ 633 (700-2½)	
LOCAL ALTIMETER, WITHOUT LAST STEPDOWN FIX					
S-LOC 35L**	1720-¾	413 (500-¾)	1720-1 413 (500-1)		
<input checked="" type="checkbox"/> CIRCLING	1760-1 453 (500-1)	1800-1½ 493 (500-1½)	1900-2 593 (600-2)	1940-2½ 633 (700-2½)	

FAF to MAP 4.7 NM					
Knots	60	90	120	150	180
Min:Sec	4:42	3:08	2:21	1:53	1:34

ENID, OKLAHOMA  
 Orig 30NOV23

36°20'N-97°55'W

VANCE AFB (KEND)

# ILS or LOC RWY 35L

SC-1, 23 JAN 2025 to 20 FEB 2025

SC-1, 23 JAN 2025 to 20 FEB 2025