

# RNAV (GPS) Y RWY 35L

APCH CRS	Rwy ldg	9217
003°	THRE	1307
	Arpt Elev	1307

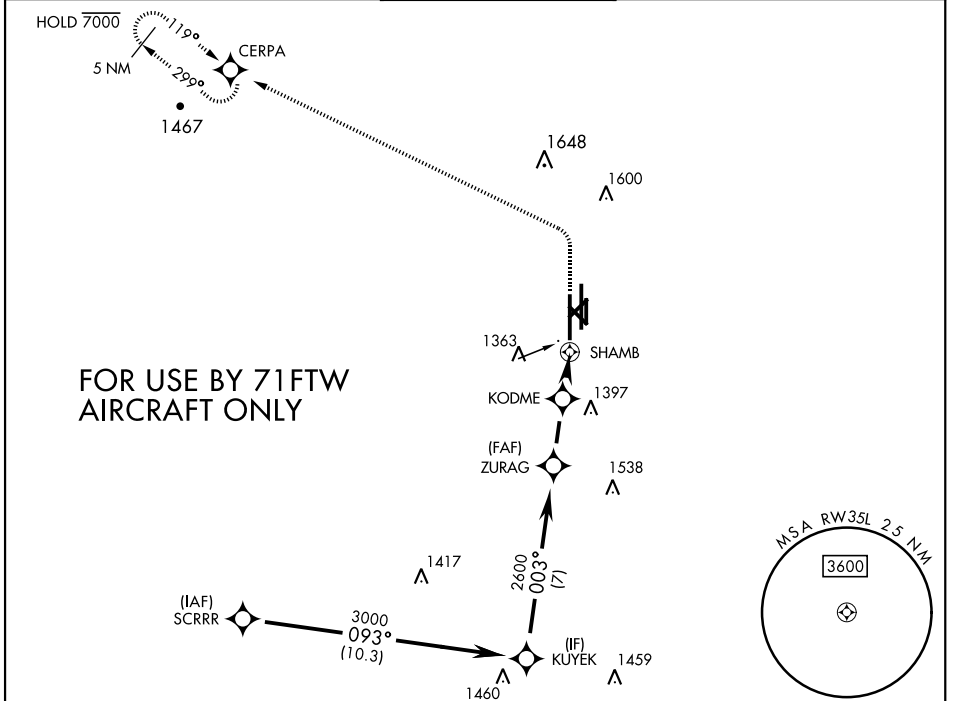
AL-135 [USAF]

VANCE AFB (KEND)

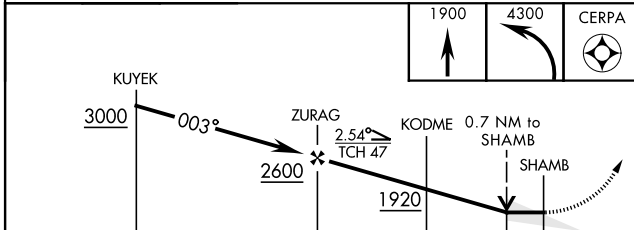
RNP APCH	SALS
RADAR required	(A2)
* When ALS inop, increase vis to 1 mile. Circling visibility reduction by helicopters not authorized.	

MISSED APPROACH: Climb to 1900, then climbing left turn to 4300 direct CERPA and hold.

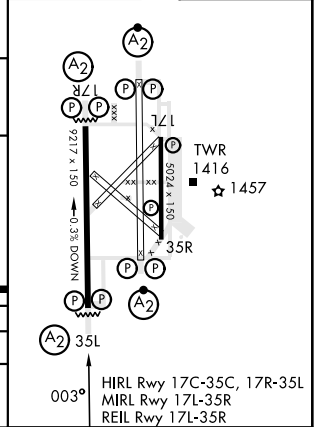
ATIS ★ <b>115.4 263.15</b>	APP CON <b>125.45 388.2</b> (E) <b>126.75 346.325</b> (W)	TOWER ★ <b>124.05 259.1</b>	GND CON <b>121.675 289.4</b>	CLNC DEL <b>225.4</b>
-------------------------------	---	--------------------------------	---------------------------------	--------------------------



EMERG SAFE ALT 100 NM 4500



ELEV 1307	THRE 1307
-----------	-----------



CATEGORY	A	B	C	D	E
LNNAV MDA *	1660 - 3/4		353	(400 - 3/4)	
CIRCLING	1760-1	453 (500-1)	1800-1 1/2 493 (500-1 1/2)	1900-2 593 (600-2)	2300-3 993 (1000-3)

# RNAV (GPS) Y RWY 35L

SC-1, 23 JAN 2025 to 20 FEB 2025

SC-1, 23 JAN 2025 to 20 FEB 2025