

ENID, OKLAHOMA

VOR/DME RWY 35R

VORTAC END 115.4 Chan 101	APCH CRS 342°	Rwy Idg 5024 TDZE 1284 Arprt Elev 1307
---	-------------------------	---

AL-135 [USAF]

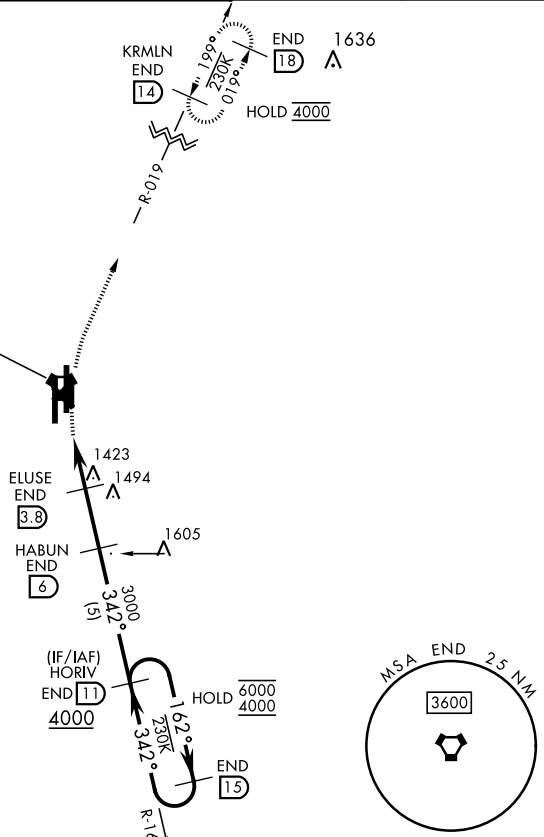
VANCE AFB (KEND)

Visibility reduction by helicopters NA.	MISSED APPROACH: Climbing right turn to 4000 on heading 005°, intercept END VORTAC R-019 to KRMLN and hold.
---	---

ATIS ★ 115.4 263.15	APP CON 125.45 388.2 EAST 126.75 346.325 WEST	TOWER ★ 124.05 259.1	GND CON 121.675 289.4	CLNC DEL 225.4
-------------------------------	---	--------------------------------	---------------------------------	--------------------------

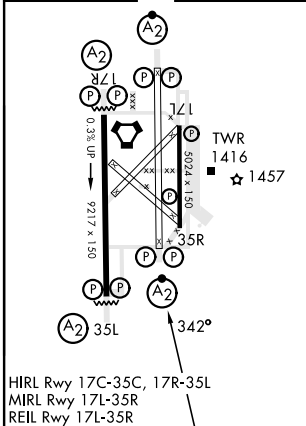
FOR USE BY 71 FTW ACFT ONLY

VANCE
115.4 END ≡:.
Chan 101



EMERG SAFE ALT 100 NM 4500

ELEV 1307	TDZE 1284
-----------	-----------



HIRL Rwy 17C-35C, 17R-35L
MIRL Rwy 17L-35R
REIL Rwy 17L-35R

4000 hdg 005° END R-019	KRMLN END 14	VGSi and descent angles not coincident (VGSi Angle 3.00/TCH 50).		
VORTAC	FIGTU 1.9	ELUSE 3.8 3.02° TCH 40		
HABUN 6	HORIV 11 162°	END 15 342° 4000 6000		
CATEGORY	A	B	C	D
S-35R	1720-1 $\frac{3}{8}$ 436	(500-1 $\frac{3}{8}$)	NA	NA
CIRCLING	1760-1 $\frac{3}{8}$ 453	(500-1 $\frac{3}{8}$)	NA	NA

ENID, OKLAHOMA

36°20'N-97°55'W

VANCE AFB (KEND)

Orig 24MAR22

VOR/DME RWY 35R

SC-1, 23 JAN 2025 to 20 FEB 2025

SC-1, 23 JAN 2025 to 20 FEB 2025