

APP CRS	Rwy Idg	6000
191°	TDZE	144
	Apt Elev	147

RNAV (GPS) RWY 19

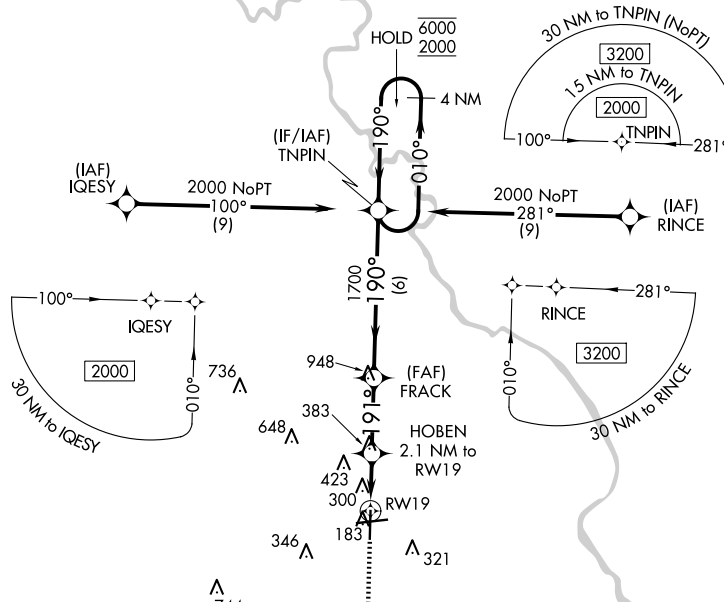
FLORENCE RGNL (FLO)

RNP APCH - GPS.		MISSED APPROACH: Climb to 2000 direct PAILS and on track 188° to NUTAL and hold.		
<p>▼ Rwy 19 helicopter visibility reduction below 1 SM NA. Straight-in Rwy 19 NA at night, Circling Rwy 1, 19 NA at night.</p>				

ATIS	FLORENCE APP CON★	FLORENCE TOWER★	GND CON	CLNC DEL	UNICOM
123.625	118.6 341.7 <small>(256°-074°)</small> 135.25 316.15 <small>(075°-255°)</small>	125.1 (CTAF) 353.85	121.9 353.85	121.9 353.85	122.95

SE-2, 23 JAN 2025 to 20 FEB 2025

SE-2, 23 JAN 2025 to 20 FEB 2025

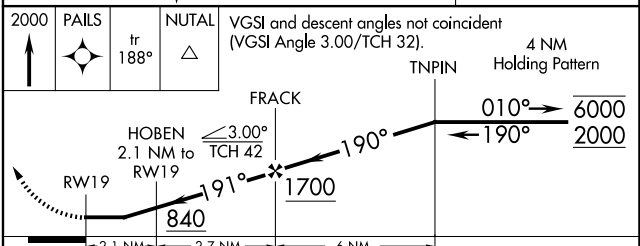


ELEV 147	TDZE 144
191°	

Diagram of RWY 19 showing:

- TWR 253, 6L, 6R
- RIL 245, 27
- Gradients: 0.4% UP, 0.5% UP
- Dimensions: 6000 X 150, 6502 X 150
- MIRL Rwy 1-19
- REIL Rwys 1, 19 and 27
- HIRL Rwy 9-27

2000	PAILS	NUTAL	VGSI and descent angles not coincident (VGSI Angle 3.00/TCH 32).
↑	✦	△	
tr 188°			4 NM Holding Pattern



CATEGORY	A	B	C	D
LNAV MDA	560-1	416 (500-1)	560-1 1/8	416 (500-1 1/8)
CIRCLING	640-1 493 (500-1)	660-1 513 (600-1)	900-2 1/4 753 (800-2 1/4)	900-2 1/2 753 (800-2 1/2)