

HOUSTON, TEXAS

AL-198 (FAA)

24193

LOC/DME I-HUB 109.9 Chan 36	APP CRS 041°	Rwy Idg 7602 TDZE 44 Apt Elev 46
--	------------------------	---

ILS or LOC RWY 4

WILLIAM P HOBBY (HOU)

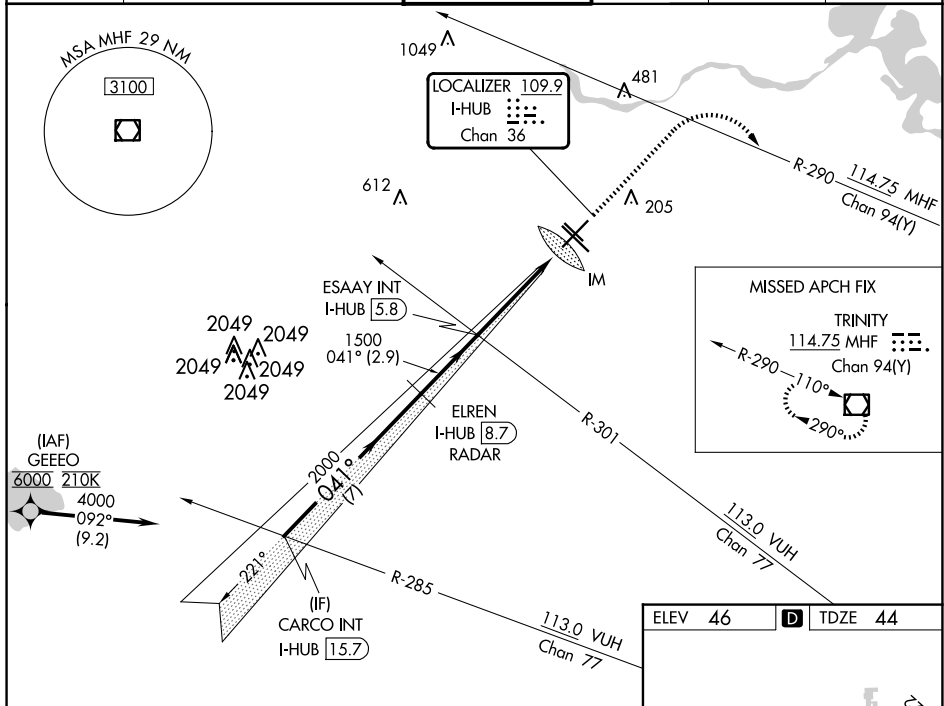
Aircraft not GPS equipped - RADAR required for procedure entry.
From GEEEO: RNAV 1- GPS required.



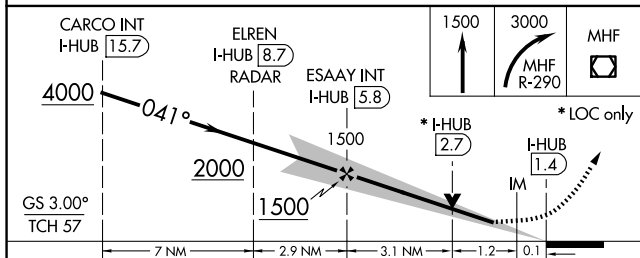
MISSED APPROACH: Climb to 1500 then climbing right turn to 3000 on MHF VOR/DME R-290 to MHF VOR/DME and hold.

- ▼ For inop ALSF-2, increase S-ILS 4 Cat E visibility to RVR 4000;
- ▲ S-LOC 4 Cat C/D/E visibility to 1½.

D-ATIS 124.6	HOUSTON APP CON 120.05 379.1 EAST 124.35 316.15 WEST	HOBBY TOWER 118.7 256.9	GND CON 121.9	CLNC DEL 125.45	CPDLC
------------------------	--	-----------------------------------	-------------------------	---------------------------	-------



MISSED APCH FIX
TRINITY
114.75 MHF Chan 94(Y)
R-290-110°
290°



ELEV 46	TDZE 44
---------	---------

TWR 190
REIL Rwy 31L
MIRL Rwy 13L-31R
HIRL Rwy 4-22 and 13R-31L
TDZ/CL Rwy 4, 13R and 31L
FAF to MAP 4.4 NM
Knots 60 90 120 150 180
Min:Sec 4:24 2:56 2:12 1:46 1:28

CATEGORY	A	B	C	D	E
S-ILS 4	244/18 200 (200-½)				
S-LOC 4	520/24	476 (500-½)	520/50 476 (500-1)		
CIRCLING	520-1	474 (500-1)	740-2¼	694 (700-2¼)	860-3 814 (900-3)

HOUSTON, TEXAS
Amdt 43A 25APR19

29°39'N-95°17'W

WILLIAM P HOBBY (HOU) ILS or LOC RWY 4

SC-5, 23 JAN 2025 to 20 FEB 2025

SC-5, 23 JAN 2025 to 20 FEB 2025