

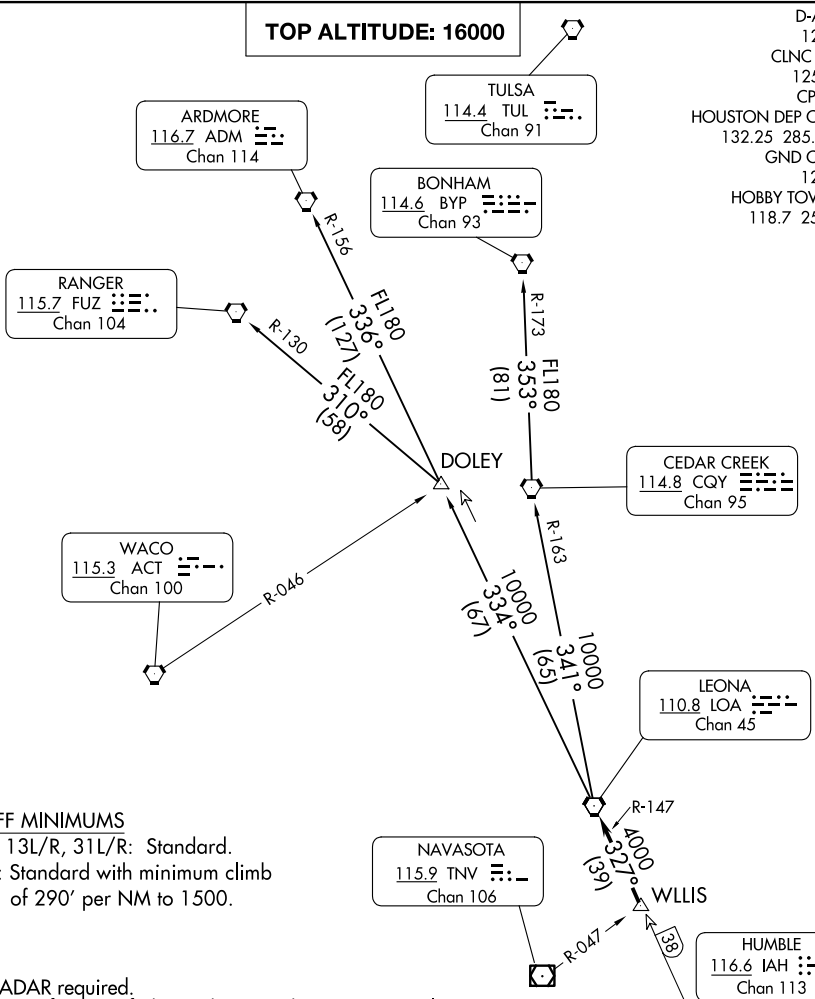
# LEONA FOUR DEPARTURE

AL-198 (FAA)

WILLIAM P HOBBY (HOU)  
HOUSTON, TEXAS

**TOP ALTITUDE: 16000**

D-ATIS  
124.6  
CLNC DEL  
125.45  
CPDLC  
HOUSTON DEP CON  
132.25 285.425  
GND CON  
121.9  
HOBBY TOWER  
118.7 256.9



### TAKEOFF MINIMUMS

Rwys 4, 13L/R, 31L/R: Standard.  
Rwy 22: Standard with minimum climb  
of 290' per NM to 1500.

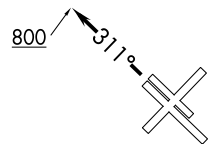
NOTE: RADAR required.

NOTE: Except for aircraft destined ACT or the DFW terminal area,  
all aircraft filing the LEONA SID must file one of the  
published transitions via FUZ (LOA4.FUZ), ADM (LOA4.ADM),  
or BYP (LOA4.BYP).

NOTE: RANGER TRANSITION: For aircraft overflying  
west/northwest of the DFW terminal area FL240 and above.

NOTE: ARDMORE TRANSITION: For aircraft overflying  
north/northwest of the DFW terminal area FL240 and  
above.

NOTE: BONHAM TRANSITION: For aircraft overflying/landing  
TUL VORTAC FL240 and above.



NOTE: Chart not to scale.

(CONTINUED ON FOLLOWING PAGE)

SC-5, 23 JAN 2025 to 20 FEB 2025

SC-5, 23 JAN 2025 to 20 FEB 2025