

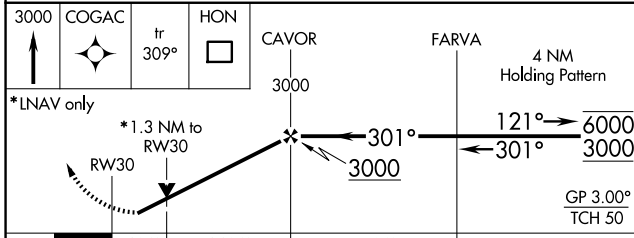
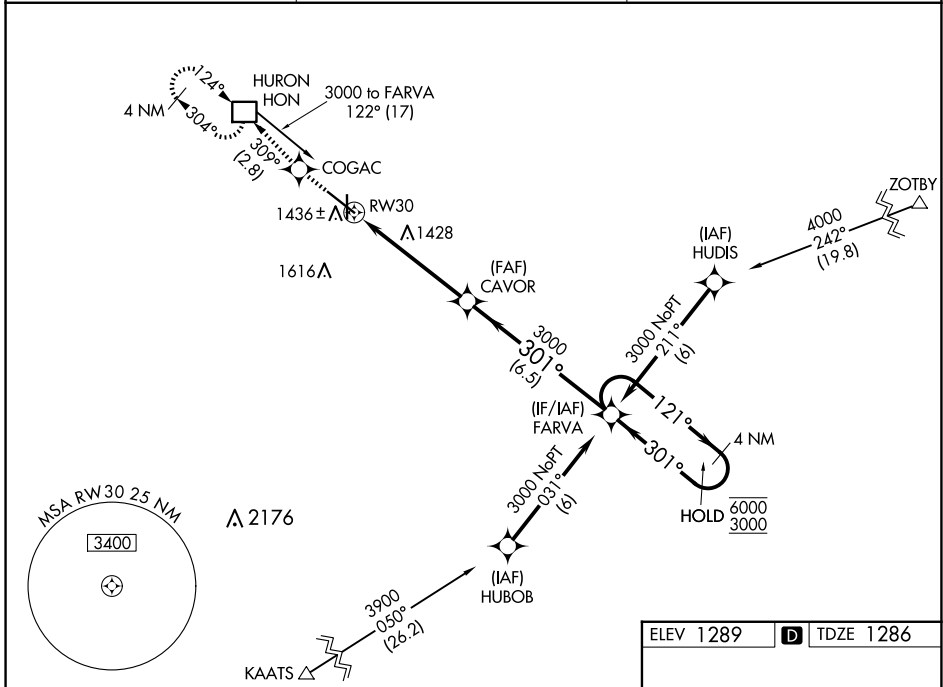
WAAS CH 77514 W30A	APP CRS 301°	Rwy Idg TDZE Apt Elev	7201 1286 1289
--	------------------------	-----------------------------	---

RNAV (GPS) RWY 30

HURON RGNL (HON)

RNP APCH.	MISSED APPROACH: Climb to 3000 direct COGAC and on track 309° to HON DME and hold.
<p>⚠ Circling Rwy 18, 36 NA at night. Rwy 30 helicopter visibility reduction below 3/4 SM NA. For uncompensated Baro-VNAV systems, LNAV/VNAV NA below -17°C or above 54°C.</p>	

ASOS 118.125	MINNEAPOLIS CENTER 126.25 339.8	UNICOM 123.0 (CTAF) 0
------------------------	---	---------------------------------



ELEV 1289	D TDZE 1286
-----------	--------------------

This block contains the runway and taxiway information for RWY 30. It shows the runway length as 7201 x 100 feet and the taxiway length as 5000 x 75 feet. The diagram also shows the runway lights, including the HIRL (High Intensity Runway Lights), MRL (Medium Intensity Runway Lights), and REIL (Runway End Identifier Lights). The runway is marked with 30 and 36. The taxiway is marked with 36 and 301° to RWY 30.

CATEGORY	A	B	C	D
LPV DA	1559-1 273 (300-1)			
LNAV/VNAV DA	1721-1½ 435 (500-1½)			
LNAV MDA	1760-1 474 (500-1)	1760-1⅜ 474 (500-1⅜)	1760-1½ 474 (500-1½)	
C CIRCLING	1820-1 531 (600-1)	1920-1¾ 631 (700-1¾)	1980-2¼ 691 (700-2¼)	

NC-1, 23 JAN 2025 to 20 FEB 2025

NC-1, 23 JAN 2025 to 20 FEB 2025