

# DSNEE SIX ARRIVAL (RNAV) Transition Routes

LONG BEACH, CALIFORNIA

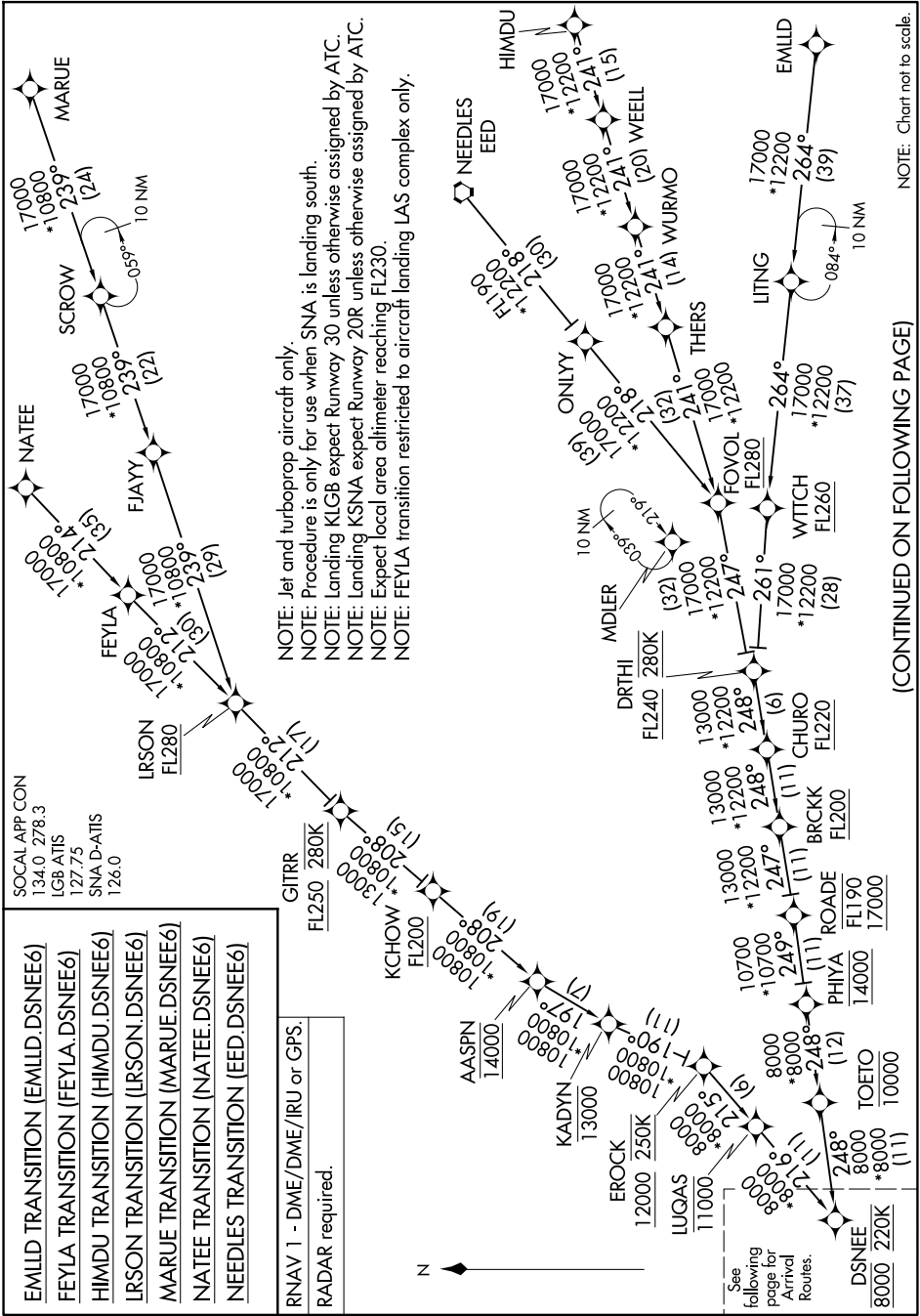
SW-3, 23 JAN 2025 to 20 FEB 2025

- EMILD TRANSITION (EMILD.DSNEE6)
- FEYLA TRANSITION (FEYLA.DSNEE6)
- HIMDU TRANSITION (HIMDU.DSNEE6)
- LRSON TRANSITION (LRSON.DSNEE6)
- MARUE TRANSITION (MARUE.DSNEE6)
- NATEE TRANSITION (NATEE.DSNEE6)
- NEEDLES TRANSITION (EED.DSNEE6)

SOCAL APP CON  
134.0 278.3  
LGB ATIS  
127.75  
SNA D-ATIS  
126.0

RNAV 1 - DME/DME/IRU or GPS.  
RADAR required.

NOTE: Jet and turboprop aircraft only.  
NOTE: Procedure is only for use when SNA is landing south.  
NOTE: Landing KLGW expect Runway 30 unless otherwise assigned by ATC.  
NOTE: Landing KNSA expect Runway 20R unless otherwise assigned by ATC.  
NOTE: Expect local area altimeter reaching FL230.  
NOTE: FEYLA transition restricted to aircraft landing LAS complex only.



NOTE: Chart not to scale.

(CONTINUED ON FOLLOWING PAGE)

SW-3, 23 JAN 2025 to 20 FEB 2025

# DSNEE SIX ARRIVAL (RNAV) Transition Routes

LONG BEACH, CALIFORNIA