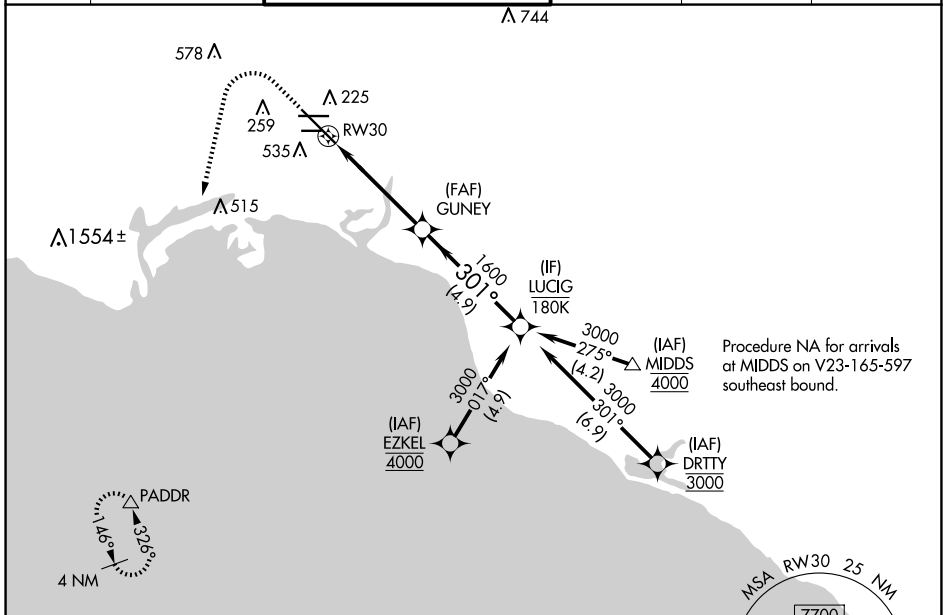


APP CRS	Rwy Idg	7414
301°	TDZE	38
	Apt Elev	60

RNAV (RNP) Y RWY 30

LONG BEACH (DAUGHERTY FLD) (LGB)

RNP AR APCH.		MALSR		MISSED APPROACH: Climb to 800 then climbing left turn to 3000 direct PADDR and hold.	
<p>▼ For uncompensated Baro-VNAV systems, procedure NA below 4° C or above 54° C.</p>					
ATIS	SOCAL APP CON	LONG BEACH TOWER*	GND CON	CLNC DEL	UNICOM
127.75	125.35 316.125	120.5 257.6 (Rwy 12) 119.4 (CTAF) 257.6 (Rwy 30)	133.0 257.6	118.15	122.95



SW-3, 23 JAN 2025 to 20 FEB 2025

SW-3, 23 JAN 2025 to 20 FEB 2025

