

# ZUUMA FOUR ARRIVAL (RNAV)

AL-237 (FAA)

LOS ANGELES, CALIFORNIA

SOCAL APP CON  
 128.5 360.7  
 LAX D-ATIS  
 133.8  
 SMO ATIS  
 119.15  
 LOS ANGELES TOWER  
 (N) 133.9 239.3  
 (S) 120.95 379.1  
 SANTA MONICA TOWER ★  
 120.1 257.8

**ARRIVAL ROUTE DESCRIPTION**

BURGL TRANSITION (BURGL.ZUUMA4)

DOUIT TRANSITION (DOUIT.ZUUMA4)

REBRG TRANSITION (REBRG.ZUUMA4)

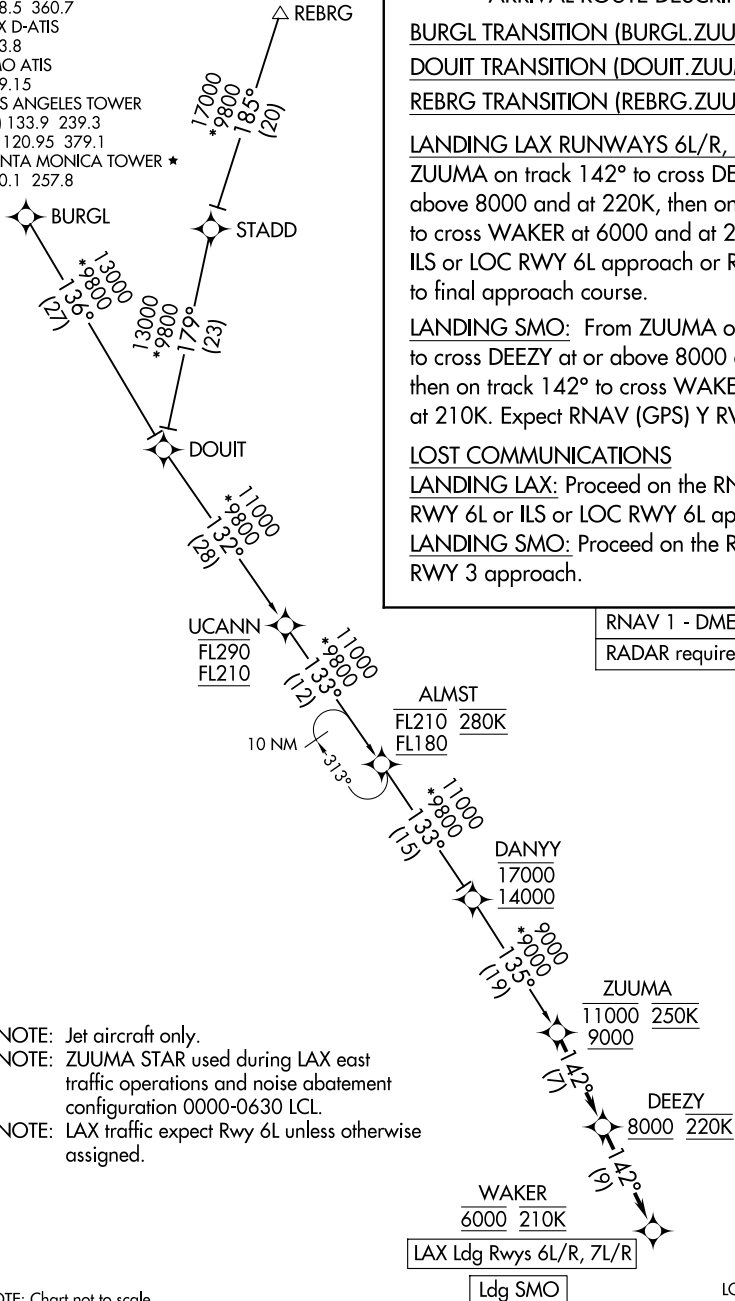
LANDING LAX RUNWAYS 6L/R, 7L/R: From ZUUMA on track 142° to cross DEEZY at or above 8000 and at 220K, then on track 142° to cross WAKER at 6000 and at 210K. Expect ILS or LOC RWY 6L approach or RADAR vectors to final approach course.

LANDING SMO: From ZUUMA on track 142° to cross DEEZY at or above 8000 and at 220K, then on track 142° to cross WAKER at 6000 and at 210K. Expect RNAV (GPS) Y RWY 3 approach.

LOST COMMUNICATIONS

LANDING LAX: Proceed on the RNAV (RNP) Z RWY 6L or ILS or LOC RWY 6L approach.

LANDING SMO: Proceed on the RNAV (GPS) Y RWY 3 approach.



RNAV 1 - DME/DME/IRU or GPS.  
 RADAR required.

- NOTE: Jet aircraft only.
- NOTE: ZUUMA STAR used during LAX east traffic operations and noise abatement configuration 0000-0630 LCL.
- NOTE: LAX traffic expect Rwy 6L unless otherwise assigned.

NOTE: Chart not to scale.

# ZUUMA FOUR ARRIVAL (RNAV)

LOS ANGELES, CALIFORNIA

SW-3, 23 JAN 2025 to 20 FEB 2025

SW-3, 23 JAN 2025 to 20 FEB 2025