


LOC/DME I-LBB <b>111.7</b> Chan <b>54</b>	APP CRS <b>174°</b>	Rwy Idg <b>11500</b> TDZE <b>3282</b> Apt Elev <b>3282</b>
---	------------------------	--

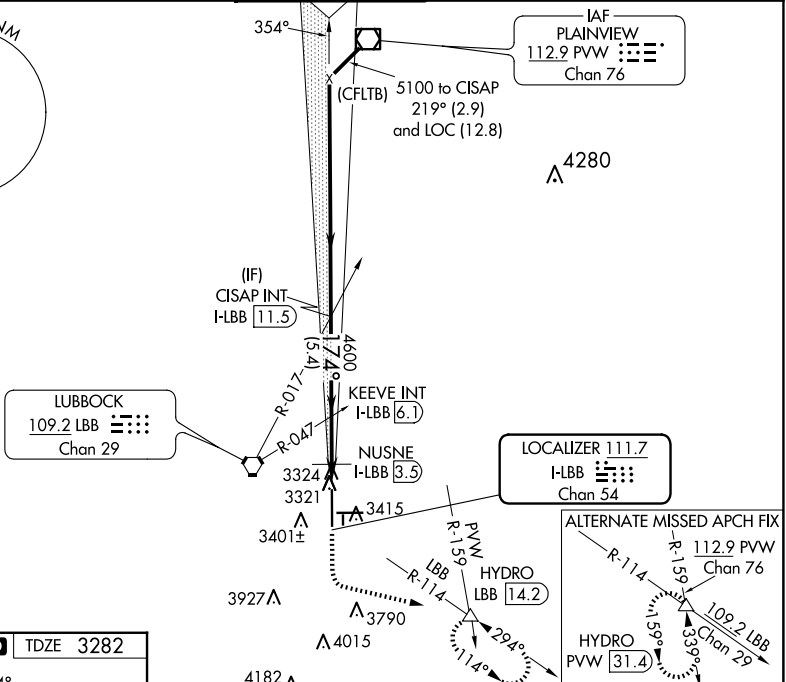
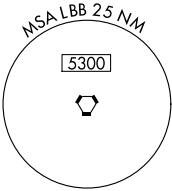
# ILS or LOC RWY 17R

LUBBOCK PRESTON SMITH INTL (LBB)

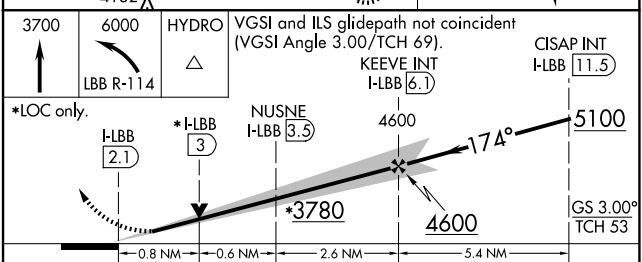
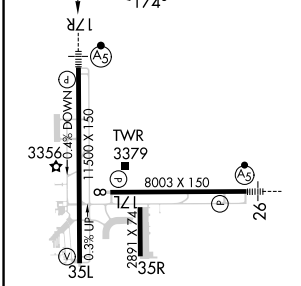
**⚠** For inop MALSR, increase S-ILS 17R Cat E visibility to RVR 4000, S-LOC 17R Cat C/D/E visibility to 1 $\frac{1}{2}$  mile, and NUSNE DME Fix Minimums, increase S-LOC 17R Cat C/D/E visibility to RVR 5000.  
#RVR 1800 authorized with the use of FD or AP or HUD to DA.

**MALSR**  MISSED APPROACH: Climb to 3700 then climbing left turn to 6000 via LBB VORTAC R-114 to HYDRO INT/LBB 14.2 DME and hold, continue climb-in-hold to 6000.

ATIS <b>125.3 270.275</b>	LUBBOCK APP CON <b>119.2 351.8</b>	LUBBOCK TOWER <b>120.5 239.3</b>	GND CON <b>121.9 348.6</b>	CLNC DEL <b>125.8 281.55</b>
------------------------------	---------------------------------------	-------------------------------------	-------------------------------	---------------------------------



ELEV <b>3282</b>	<b>D</b>	TDZE <b>3282</b>
------------------	----------	------------------



CATEGORY	A	B	C	D	E
S-ILS 17R	#3482/24 200 (200- $\frac{1}{2}$ )				
S-LOC 17R	3780/24	498 (500- $\frac{1}{2}$ )	3780/50 498 (500-1)		
<b>C</b> CIRCLING	3780-1	498 (500-1)	3880-1 $\frac{1}{2}$ 598 (600-1 $\frac{1}{2}$ )	3940-2 658 (700-2)	4100-3 818 (900-3)
NUSNE FIX MINIMUMS (DME REQUIRED)					
S-LOC 17R	3620/24	338 (400- $\frac{1}{2}$ )	3620/26 338 (400- $\frac{1}{2}$ )		
<b>C</b> CIRCLING	3720-1 438 (500-1)	3740-1 458 (500-1)	3880-1 $\frac{1}{2}$ 598 (600-1 $\frac{1}{2}$ )	3940-2 658 (700-2)	4100-3 818 (900-3)

REIL Rwy 8  
HIRL Rwys 8-26 and 17R-35L

FAF to MAP 4 NM

Knots	60	90	120	150	180
Min:Sec	4:00	2:40	2:00	1:36	1:20

LUBBOCK, TEXAS  
Amdt 18 05JAN17

33°40'N-101°49'W

# LUBBOCK PRESTON SMITH INTL (LBB) ILS or LOC RWY 17R

SC-2, 23 JAN 2025 to 20 FEB 2025

SC-2, 23 JAN 2025 to 20 FEB 2025