

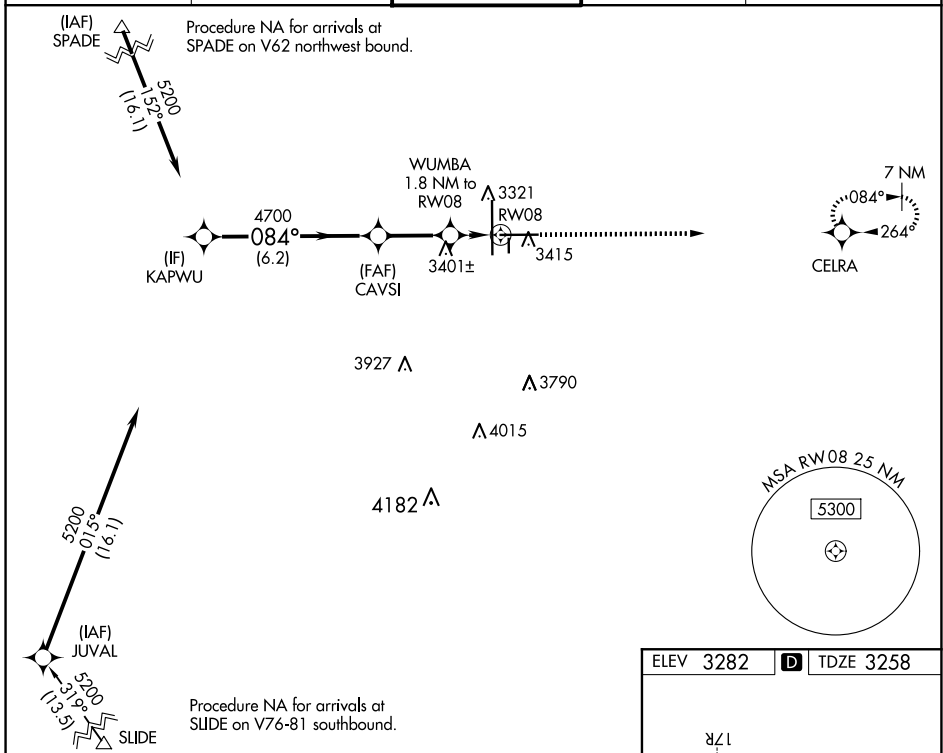
WAAS CH 97327 W08A	APP CRS 084°	Rwy Idg TDZE Apt Elev	8003 3258 3282
--	------------------------	-----------------------------	---

RNAV (GPS) RWY 8

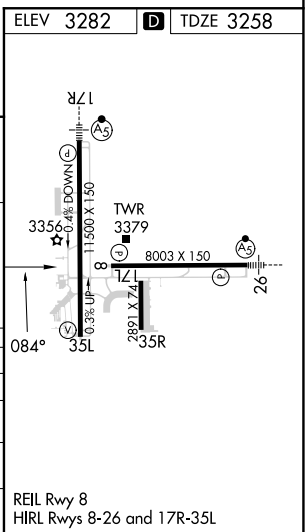
LUBBOCK PRESTON SMITH INTL (LBB)

RNP APCH.	MISSED APPROACH: Climb to 5000 direct CELRA and hold.
▼ For uncompensated Baro-VNAV systems, LNAV/VNAV NA below -10°C or above 52°C.	

ATIS 125.3 270.275	LUBBOCK APP CON 119.2 351.8	LUBBOCK TOWER 120.5 239.3	GND CON 121.9 348.6	CLNC DEL 125.8 281.55
------------------------------	---------------------------------------	-------------------------------------	-------------------------------	---------------------------------



KAPWU	5200	084°	CAVSI	4700	WUMBA 1.8 NM to RW08	5000	CELRA
GP 3.00° TCH 50			*3880	*1 NM to RW08			
	6.2 NM		2.6 NM	0.8 NM	1 NM		
CATEGORY	A	B	C	D	E		
LPV DA	3458-3/4		200 (200-3/4)				
LNAV/VNAV DA	3544-7/8		286 (300-7/8)				
LNAV MDA	3640-1	382 (400-1)	3640-1 1/8	382 (400-1 1/8)			
CIRCLING	3720-1 438 (500-1)	3740-1 458 (500-1)	3880-1 1/2 598 (600-1 1/2)	3940-2 658 (700-2)	4100-3 818 (900-3)		



SC-2, 23 JAN 2025 to 20 FEB 2025

SC-2, 23 JAN 2025 to 20 FEB 2025