

RNAV (RNP) Z RWY 35L

LUBBOCK PRESTON SMITH INTL (LBB)

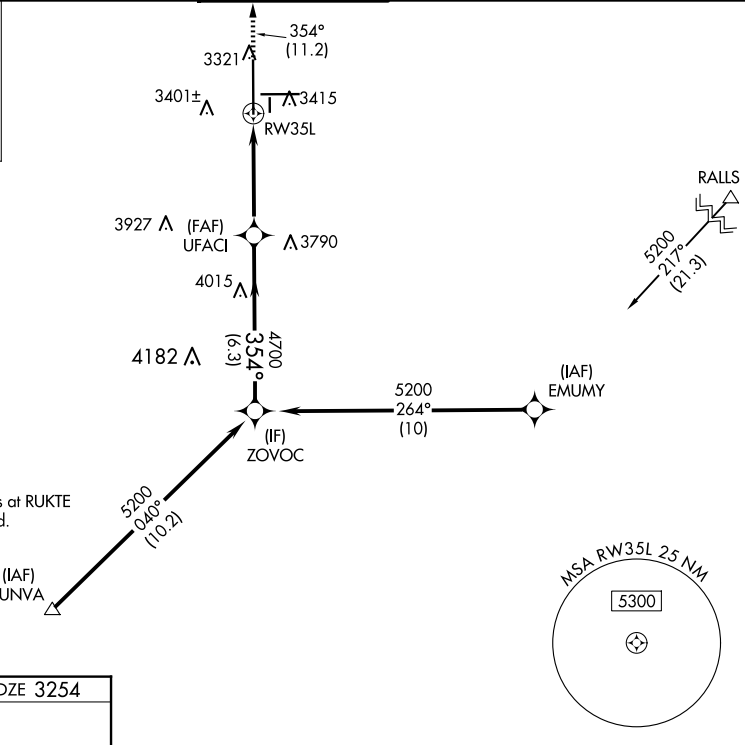
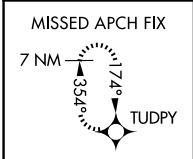
APP CRS 354°	Rwy Idg 11500
	TDZE 3254
	Apt Elev 3282

RNP AR APCH.

▼ For uncompensated Baro-VNAV systems, procedure NA below -12° C or above 51° C.

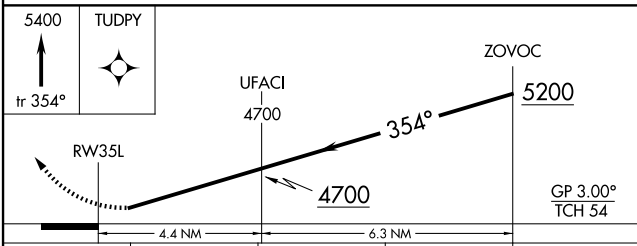
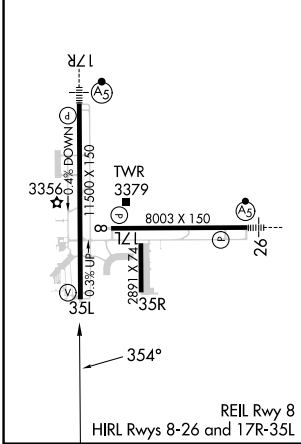
MISSED APPROACH: Climb to 5400 on track 354° to TUDPY and hold.

ATIS 125.3 270.275	LUBBOCK APP CON 119.2 351.8	LUBBOCK TOWER 120.5 239.3	GND CON 121.9 348.6	CLNC DEL 125.8 281.55
------------------------------	---------------------------------------	-------------------------------------	-------------------------------	---------------------------------



Procedure NA for arrivals at RUKTE on V102 southwest bound.

ELEV 3282	D	TDZE 3254
-----------	----------	-----------



CATEGORY	A	B	C	D
RNP 0.18 DA		3559-7/8	305 (300-%)	
RNP 0.30 DA		3620-1 1/8	366 (400-1%)	

AUTHORIZATION REQUIRED

SC-2, 23 JAN 2025 to 20 FEB 2025

SC-2, 23 JAN 2025 to 20 FEB 2025