

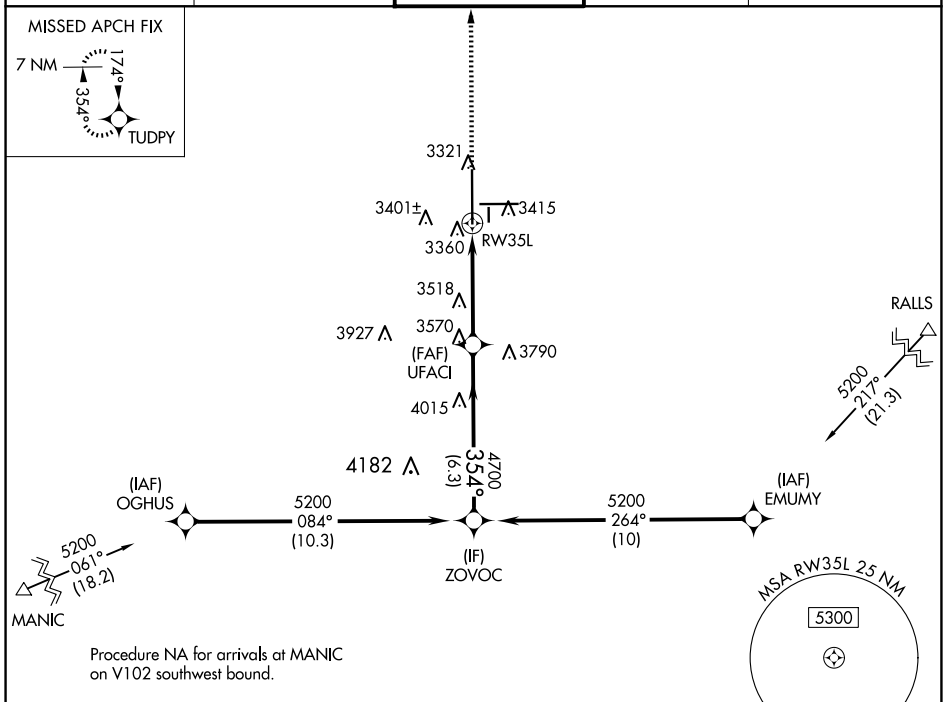
WAAS CH <b>50128</b> <b>W35A</b>	APP CRS <b>354°</b>	Rwy Idg TDZE <b>3254</b> Apt Elev <b>3282</b>
--	------------------------	---

# RNAV (GPS) Y RWY 35L

LUBBOCK PRESTON SMITH INTL (LBB)

RNP APCH.	MISSED APPROACH: Climb to 5400 direct TUDPY and hold.
▼ For uncompensated Baro-VNAV systems, LNAV/VNAV NA ▲ below -12° C or above 51° C.	

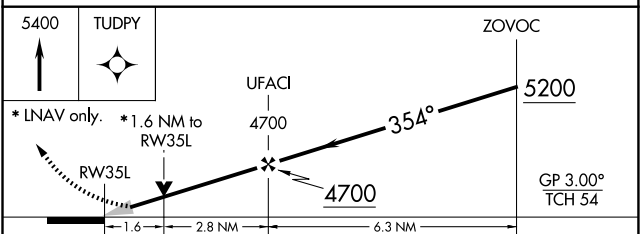
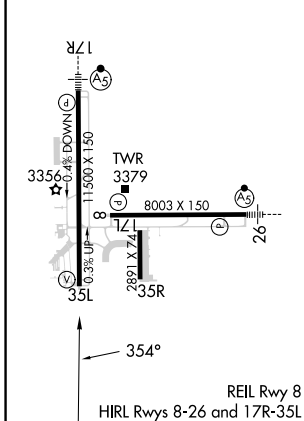
ATIS <b>125.3 270.275</b>	LUBBOCK APP CON <b>119.2 351.8</b>	LUBBOCK TOWER <b>120.5 239.3</b>	GND CON <b>121.9 348.6</b>	CLNC DEL <b>125.8 281.55</b>
------------------------------	---------------------------------------	-------------------------------------	-------------------------------	---------------------------------



SC-2, 23 JAN 2025 to 20 FEB 2025

SC-2, 23 JAN 2025 to 20 FEB 2025

ELEV 3282	<b>D</b> TDZE 3254
-----------	--------------------



CATEGORY	A	B	C	D	E
LPV DA	3454-3/4		200 (200-3/4)		
LNAV/VNAV DA	3673-1 1/4		419 (400-1 1/4)		
LNAV MDA	3820-1	566 (600-1)	3820-1 1/8	566 (600-1 1/8)	
<b>C</b> CIRCLING	3820-1	538 (600-1)	3880-1 5/8 598 (600-1 5/8)	3940-2 658 (700-2)	4100-3 818 (900-3)