

# HOWRY THREE ARRIVAL

NC-2, 23 JAN 2025 to 20 FEB 2025

OMAHA APP CON  
124.5 263.0 EAST  
135.875 354.05 WEST  
KOFF ATIS  
126.025 273.5  
OMA D-ATIS  
120.4

O'NEILL  
113.9 ONL  
Chan 86

\*10000  
12300  
(187)

COLUMBUS  
116.95 OLU  
Chan 114(V)

\*10000  
3200  
(701)

GRAND ISLAND  
116.55 GRI  
Chan 112(V)

LINCOLN  
116.1 LNK  
Chan 108

OMAHA  
116.3 OVR  
Chan 110

## ARRIVAL ROUTE DESCRIPTION

GRAND ISLAND TRANSITION [GRI.HOWRY3]: From over GRI VOR/DME on GRI R-063 to HOWRY.

O'NEILL TRANSITION [ONL.HOWRY3]: From over ONL VORTAC on ONL R-125 and OLU R-308 to OLU VOR/DME, then on OLU R-095 to HOWRY.

From over HOWRY on OMAHA VORTAC (OVR) R-276 to BOYSS/OVR 25 DME. Thence . . . .

. . . . LANDING EPLEY AIRFIELD:

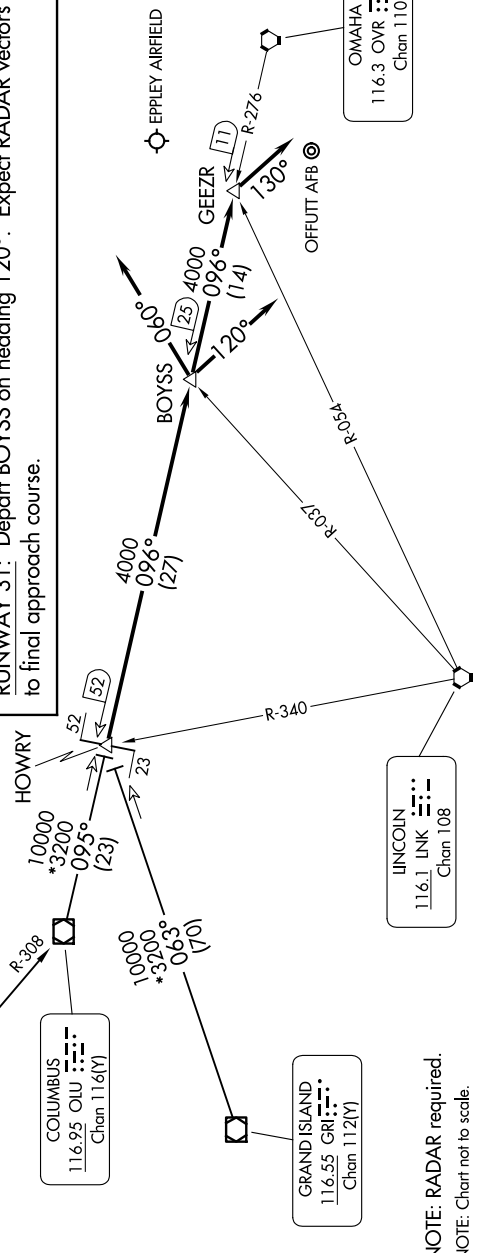
RUNWAYS 14L/R, 18: Depart BOYSS on heading 060°. Expect RADAR vectors to final approach course.

RUNWAYS 32L/R, 36: Depart BOYSS on OVR R-276 to GEEZR/OVR 11 DME, then on heading 130°. Expect RADAR vectors to final approach course.

. . . . LANDING OFFUTT AFB:

RUNWAY 13: Expect RADAR vectors to final approach course.

RUNWAY 31: Depart BOYSS on heading 120°. Expect RADAR vectors to final approach course.



# HOWRY THREE ARRIVAL

NC-2, 23 JAN 2025 to 20 FEB 2025

NOTE: RADAR required.  
NOTE: Chart not to scale.