


APP CRS	Rwy Idg	8013
	TDZE	982
178°	Apt Elev	985

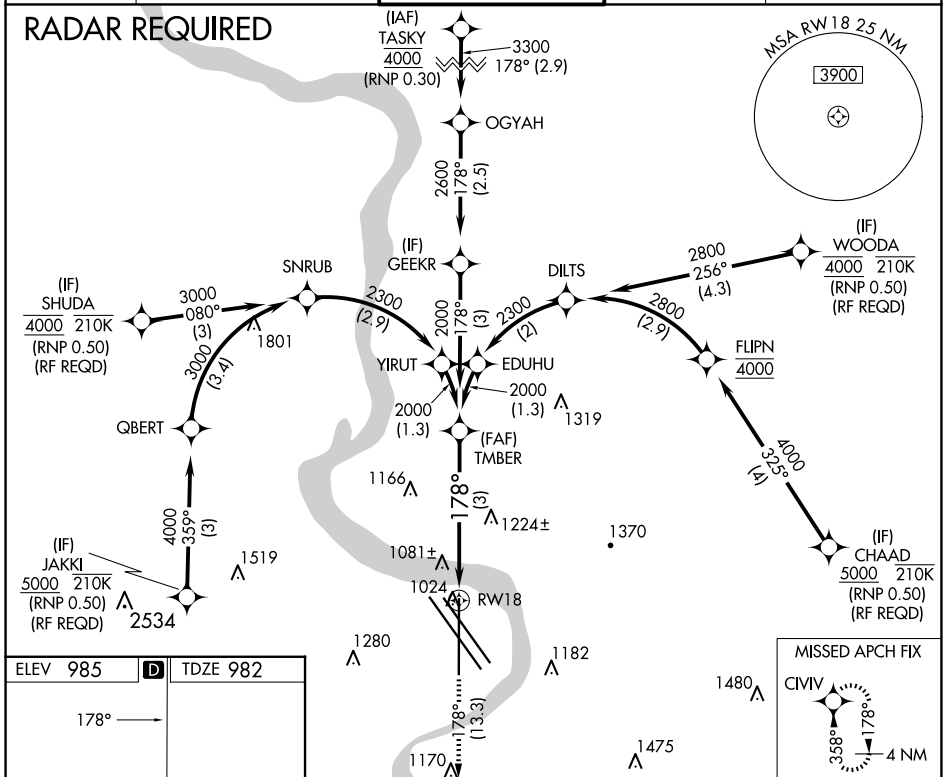
RNAV (RNP) Z RWY 18

EPPLEY AIRFIELD (OMA)

▽ For uncompensated Baro-VNAV systems, procedure NA below -17°C (2°F) or above 54°C (130°F). For inoperative ALS, increase RNP 0.15 all Cats visibility to 1½ and RNP 0.30 all Cats visibility to 2. GPS required.

MALSR

MISSED APPROACH: Climb to 3000 on track 178° to CIVIV and hold.

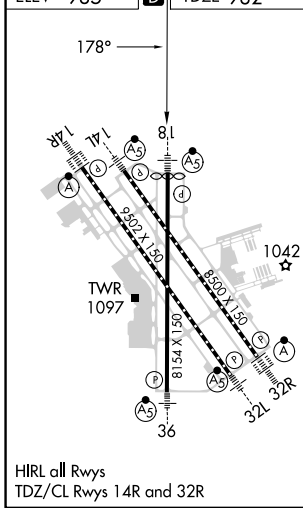
D-ATIS 120.4	OMAHA APP CON 135.875 354.05	OMAHA TOWER 132.1 256.9	GND CON 121.9	CLNC DEL 119.9
------------------------	--	-----------------------------------	-------------------------	--------------------------



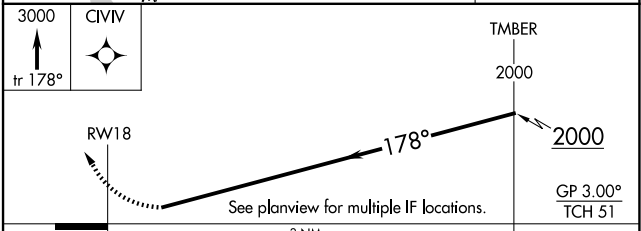
NC-2, 23 JAN 2025 to 20 FEB 2025

NC-2, 23 JAN 2025 to 20 FEB 2025

ELEV 985	D	TDZE 982
----------	----------	----------



HIRL all Rwys
 TDZ/CL Rwys 14R and 32R



CATEGORY	A	B	C	D
RNP 0.15 DA		1341/40	359 (400-¾)	
RNP 0.30 DA		1576-1½	594 (600-1½)	

AUTHORIZATION REQUIRED