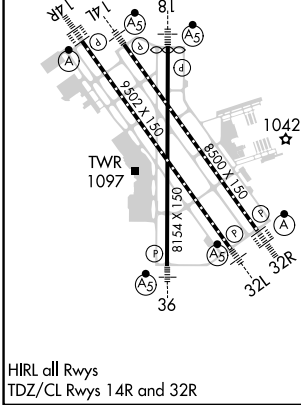
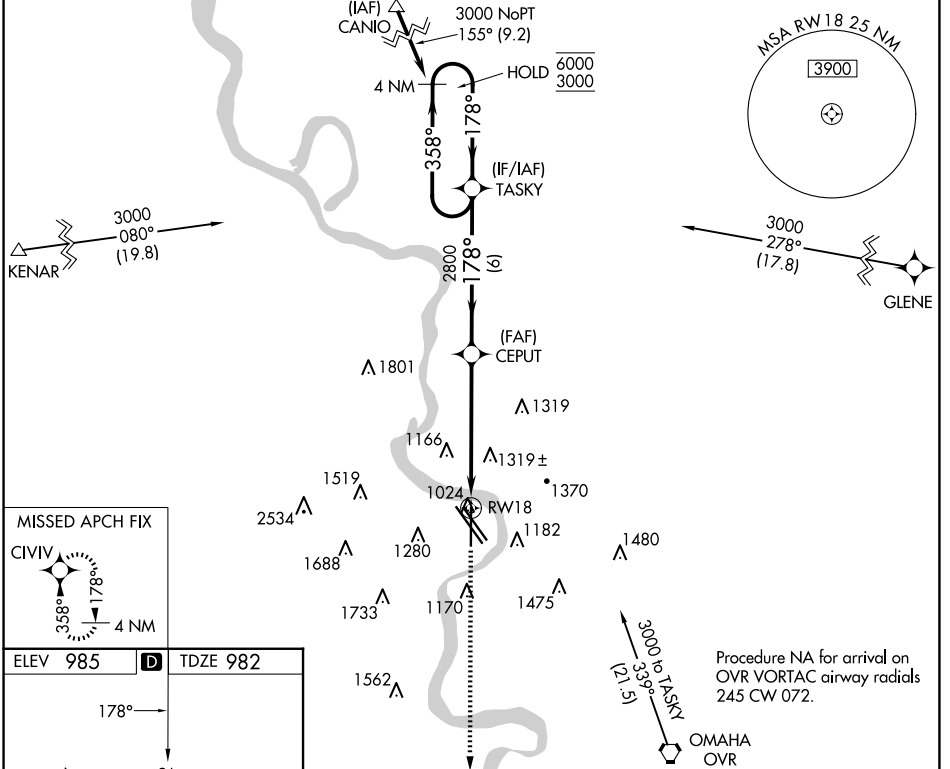


# RNAV (GPS) Y RWY 18

EPPLEY AIRFIELD (OMA)

WAAS CH <b>65617</b> <b>W18A</b>	APP CRS <b>178°</b>	Rwy Idg TDZE Apt Elev	<b>8013</b> <b>982</b> <b>985</b>
--	------------------------	-----------------------------	---

RNP APCH. ▼ For uncompensated Baro-VNAV systems, procedure NA below -19°C or above 54°C. ▲ # RVR 1800 authorized with use of FD or AP or HUD to DA.		MALSR 	MISSED APPROACH: Climb to 3000 direct CIVIV and hold.	
D-ATIS <b>120.4</b>	OMAHA APP CON <b>135.875 354.05</b>	OMAHA TOWER <b>132.1 256.9</b>	GND CON <b>121.9</b>	CLNC DEL <b>119.9</b>



ELEV 985	<b>D</b>	TDZE 982	TASKY		CEPUT	3000	CIVIV
4 NM Holding Pattern		6000 ← 358°	3000 → 178°	178°	2800	* 1.5 NM to RWY 18	* LNAV only
GP 3.00°		TCH 52		6 NM	4.1 NM	1.5	
CATEGORY	A	B	C	D			
LPV DA#		1182/24	200 (200-½)				
LNAV/VNAV DA		1540/60	558 (600-1¼)				
LNAV MDA	1520/24	538 (600-½)	1520/55	538 (600-1)			
<b>C</b> CIRCLING	1660-1 675 (700-1)	1680-1 695 (700-1)	2000-3 1015 (1100-3)	2040-3 1055 (1100-3)			

NC-2, 23 JAN 2025 to 20 FEB 2025

NC-2, 23 JAN 2025 to 20 FEB 2025