

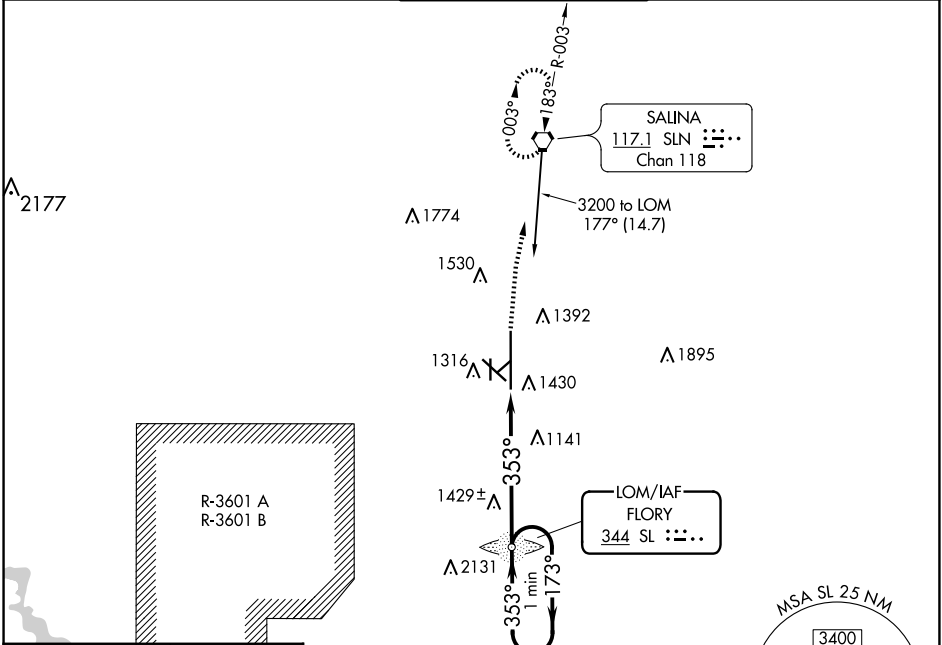
LOM SL 344	APP CRS 353°	Rwy Idg TDZE Apt Elev	12300 1271 1288
----------------------	------------------------	-----------------------------	--

NDB RWY 35

SALINA RGNL (SLN)

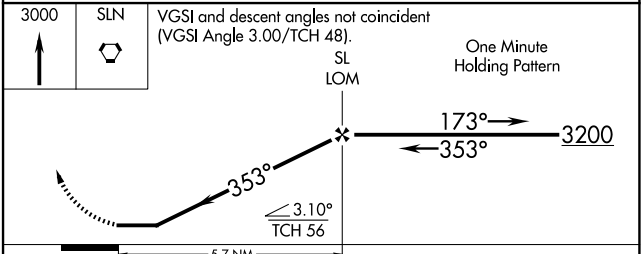
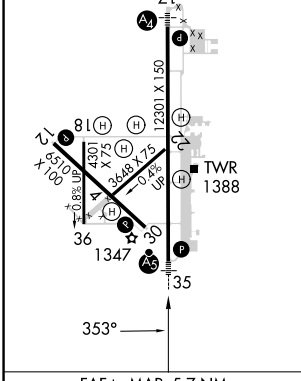
<p>Cat D Circling NA southwest of runway 12-30. For inop ALS, increase S-35 Cats A/B visibility to 1 SM and Cats C/D to 1 3/8 SM.</p>	<p>MALSR</p>	<p>MISSED APPROACH: Climb to 3000 direct SLN VORTAC and hold.</p>

ATIS 120.15	KANSAS CITY CENTER 134.9 363.2	SALINA TOWER ★ 119.3 (CTAF) 257.7	GND CON 121.9 360.8	UNICOM 122.95
-----------------------	--	---	-------------------------------	-------------------------



ELEV 1288 **D** TDZE 1271

HIRL Rwy 17-35
MIRL Rwy 12-30



CATEGORY	A	B	C	D
S-35	1760-3/4	489 (500-3/4)	1760-1 489 (500-1)	1760-1 1/4 489 (500-1 1/4)
CIRCLING	1820-1 532 (600-1)	1840-1 552 (600-1)	1860-1 1/2 572 (600-1 1/2)	1860-2 572 (600-2)

FAF to MAP 5.7 NM

Knots	60	90	120	150	180
Min:Sec	5:42	3:48	2:51	2:17	1:54

SALINA, KANSAS
Amdt 17C 20MAY21

38°47'N-97°39'W

SALINA RGNL (SLN) NDB RWY 35

NC-2, 23 JAN 2025 to 20 FEB 2025

NC-2, 23 JAN 2025 to 20 FEB 2025