

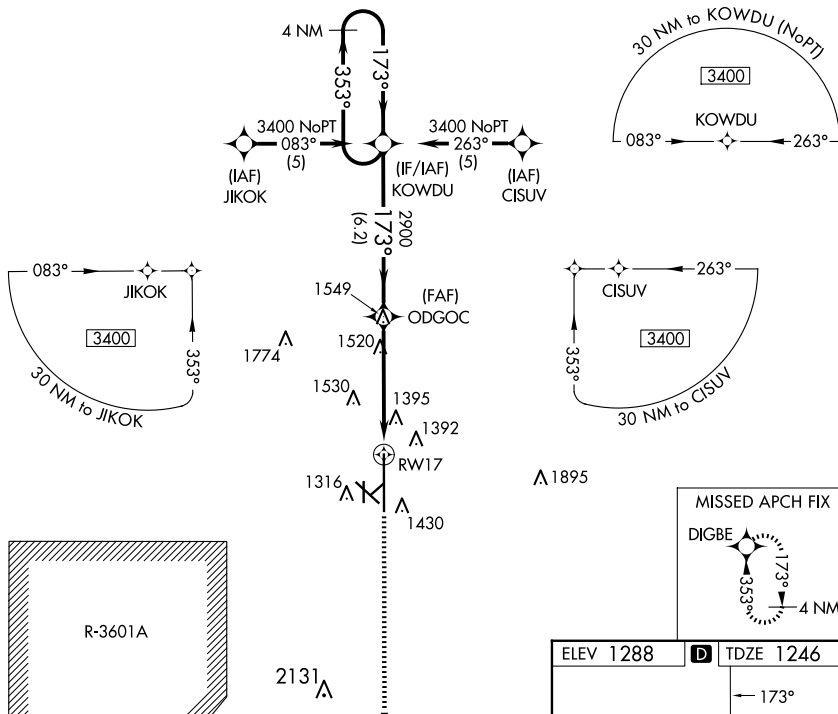
WAAS CH 70322 W17A	APP CRS 173°	Rwy Idg 12300 TDZE 1246 Apt Elev 1288
--	------------------------	--

RNAV (GPS) RWY 17

SALINA RGNL (SLN)

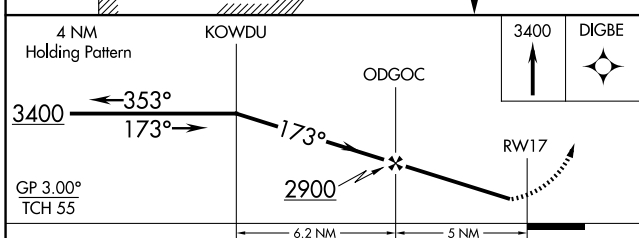
▽ DME/DME RNP-0.3 NA. Baro-VNAV NA below -17°C (2°F). Circling NA for Cat D southwest of Rwy 12-30. Inoperative table does not apply.	MALS 	MISSED APPROACH: Climb to 3400 direct DIGBE and hold.
--	----------	---

ATIS 120.15	KANSAS CITY CENTER 134.9 363.2	SALINA TOWER * 119.3 (CTAF) 1257.7	GND CON 121.9 360.8	UNICOM 122.95
-----------------------	--	---	-------------------------------	-------------------------



NC-2, 23 JAN 2025 to 20 FEB 2025

NC-2, 23 JAN 2025 to 20 FEB 2025



ELEV 1288	D TDZE 1246
-----------	--------------------

This diagram provides a detailed view of the RWY 17 approach path. It shows the 173° descent path, the 3400 ft holding altitude, and the 2900 ft descent path to RWY 17. The chart also shows the missed approach fix at DIGBE and the RWY 17 threshold.

CATEGORY	A	B	C	D
LPV DA	1496-1 250 (300-1)			
LNAV/VNAV DA	1741-1¾ 495 (500-1¾)			
LNAV MDA	1780-1 534 (500-1)	1780-1½ 534 (500-1½)	1780-1¾ 534 (500-1¾)	
CIRCLING	1820-1¾ 532 (600-1¾)	1840-1¾ 552 (600-1¾)	1860-1¾ 572 (600-1¾)	1860-2 572 (600-2)