

LOC/DME I-UUH <b>111.9</b> Chan 56	APP CRS <b>344°</b>	Rwy Idg TDZE <b>12000</b> <b>4229</b>	Apt Elev <b>4231</b>
------------------------------------------	------------------------	---------------------------------------------	-------------------------

# ILS RWY 34L (CAT II & III)

SALT LAKE CITY INTL (SLC)

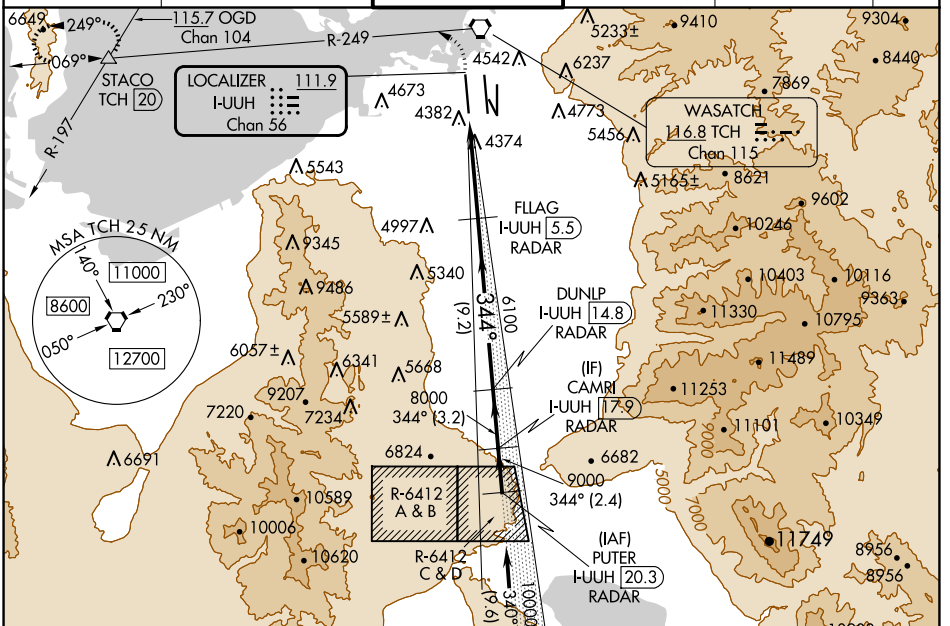
RADAR required for arrivals at PUTER. DME or RADAR required.

Simultaneous approach authorized.  
CAT II: RVR 1000 authorized with specific OPSPEC, MSPEC or LOA approval and use of autoland or HUD to touchdown.

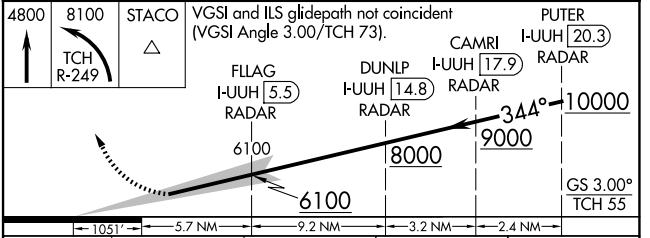
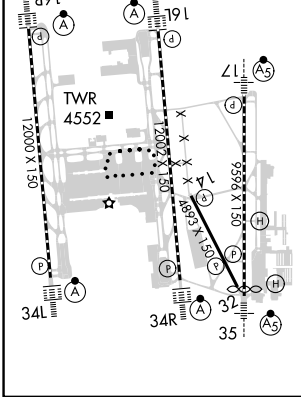
ALSF-2

MISSED APPROACH: Climb to 4800 then climbing left turn to 8100 on TCH VORTAC R-249 to STACO INT/TCH 20 DME and hold.

D-ATIS <b>124.75 125.625</b>	SALT LAKE CITY APP CON <b>125.7 284.6</b>	SALT LAKE CITY TOWER <b>132.65 336.4</b>	GND CON <b>123.775 348.6</b>	CLNC DEL <b>127.3 379.975</b>	CPDLC
---------------------------------	----------------------------------------------	---------------------------------------------	---------------------------------	----------------------------------	-------



ELEV 4231	TDZE 4229
HIRL all Rwys TDZ/CL Rwys 16L, 16R, 17, 35, 34L, and 34R	



CATEGORY	A	B	C	D
S-ILS 34L	CAT II RA 102/12 100 DA 4329			
S-ILS 34L	CAT III RVR 03			

**CATEGORY II & III ILS - SPECIAL AIRCREW & AIRCRAFT CERTIFICATION REQUIRED**

SW-4, 23 JAN 2025 to 20 FEB 2025

SW-4, 23 JAN 2025 to 20 FEB 2025