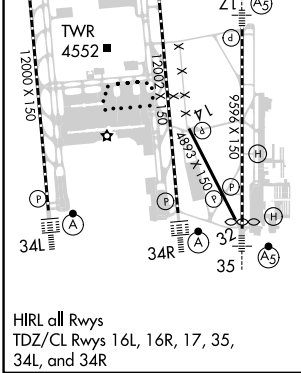
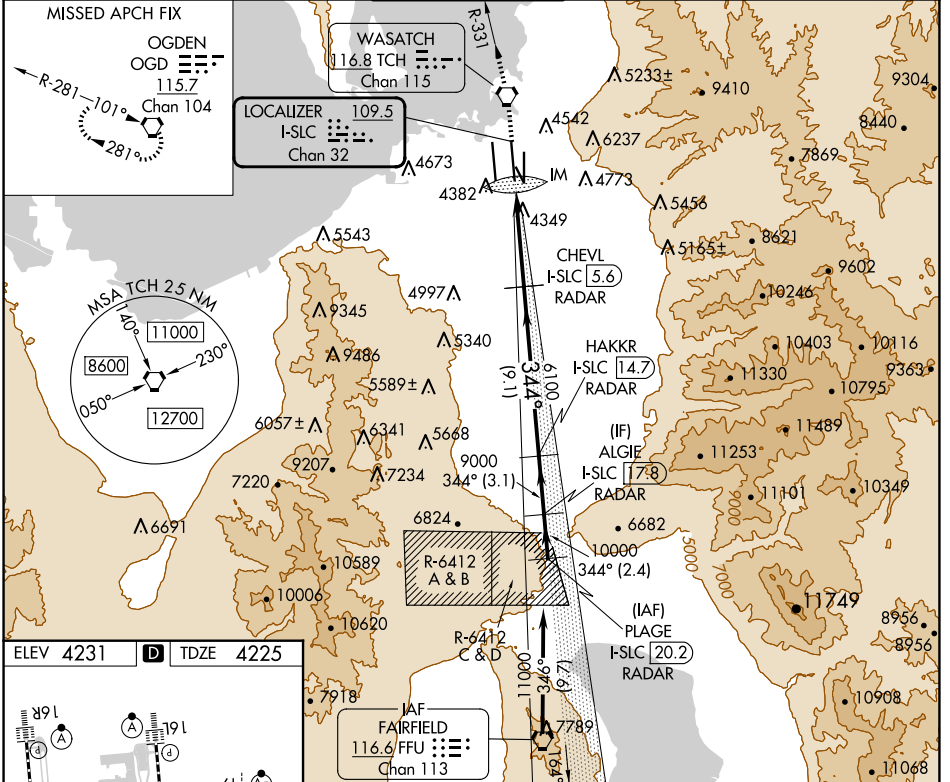


LOC/DME I-SLC 109.5 Chan 32	APP CRS 344°	Rwy Idg 12002 TDZE 4225 Apt Elev 4231
------------------------------------------	------------------------	------------------------------------------------------------------

ILS RWY 34R (SA CAT I)

SALT LAKE CITY INTL (SLC)

Simultaneous approach authorized. Requires specific OPSPEC, MSPEC, or LOA approval.		ALSF-2 	MISSED APPROACH: Climb to 9000 direct TCH VORTAC and on TCH VORTAC R-331 to OGD VORTAC and hold.		
D-ATIS 124.75 125.625	SALT LAKE CITY APP CON 125.7 284.6	SALT LAKE CITY TOWER 119.05 257.8	GND CON 123.775 348.6	CLNC DEL 127.3 379.975	CPDLC



9000	TCH	TCH R-331	OGD	VGSI and ILS glidepath not coincident (VGSI Angle 3.00/TCH 73).	PLAGE I-SLC [20.2] RADAR
6100				CHEVL I-SLC [5.6] RADAR	HAKKR I-SLC [14.7] RADAR
9000					ALGIE I-SLC [17.8] RADAR
11000					
					GS 3.00° TCH 53
CATEGORY A B C D					
S-ILS 34R RA 151/14 150 DA 4375					
SA CATEGORY I ILS - SPECIAL AIRCREW & AIRCRAFT CERTIFICATION REQUIRED					

SW-4, 23 JAN 2025 to 20 FEB 2025

SW-4, 23 JAN 2025 to 20 FEB 2025