

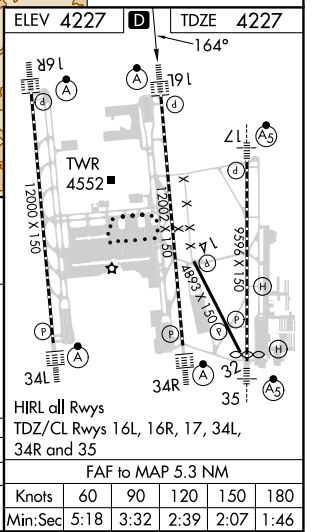
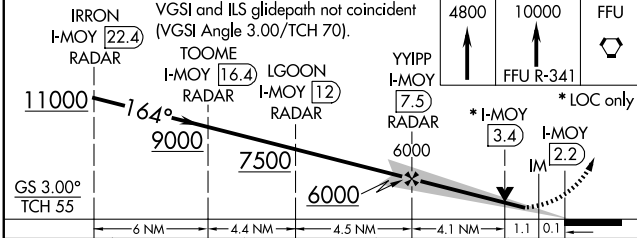
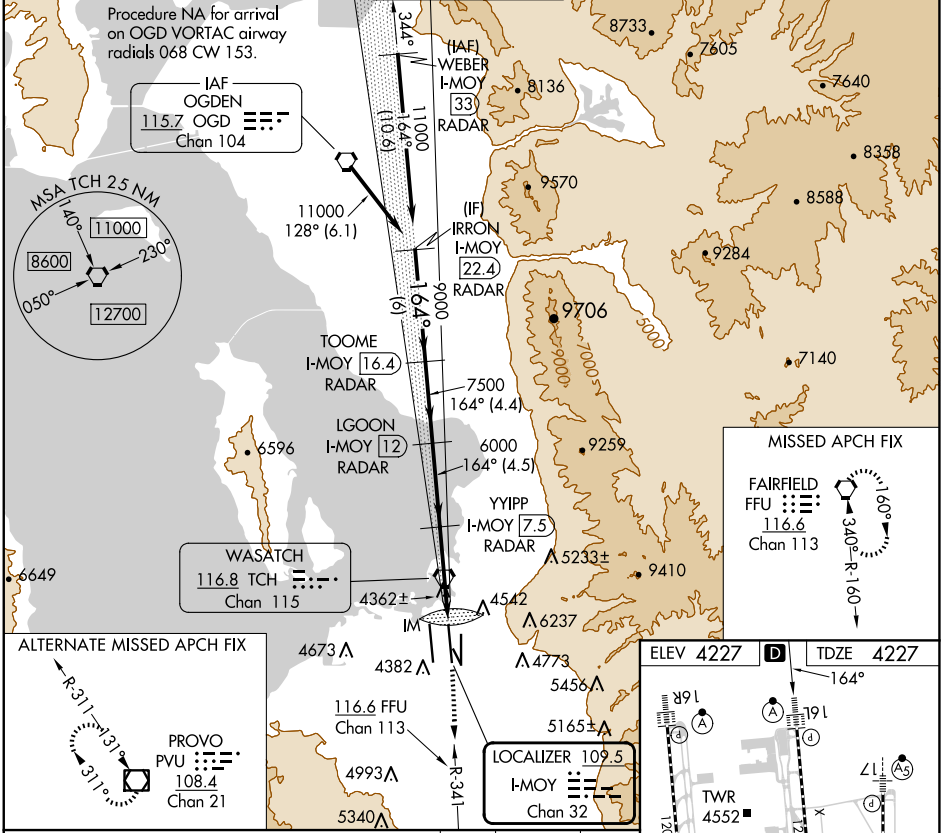
LOC/DME I-MOY <b>109.5</b> Chan <b>32</b>	APP CRS <b>164°</b>	Rwy Idg TDZE Apt Elev <b>12002</b> <b>4227</b> <b>4227</b>
---	------------------------	---

# ILS or LOC RWY 16L

SALT LAKE CITY INTL (SLC)

<p>Simultaneous approach authorized. DME or RADAR required.</p>	<p>ALSIF-2</p>	<p>MISSED APPROACH: Climb to 4800 then climb to 10000 on FFU VORTAC R-341 to FFU VORTAC and hold.</p>			
			<p>D-ATIS <b>124.75 125.625</b></p>	<p>SALT LAKE CITY APP CON <b>125.7 284.6</b></p>	<p>SALT LAKE CITY TOWER <b>119.05 257.8</b></p>

D-ATIS <b>124.75 125.625</b>	SALT LAKE CITY APP CON <b>125.7 284.6</b>	SALT LAKE CITY TOWER <b>119.05 257.8</b>	GND CON <b>123.775 348.6</b>	CLNC DEL <b>127.3 379.975</b>	CPDLC
---------------------------------	--	---	---------------------------------	----------------------------------	-------



CATEGORY	A	B	C	D
S-ILS 16L		4427/18	200 (200-½)	
S-LOC 16L	4680/24	453 (500-½)	4680/40 453 (500-¾)	4680/50 453 (500-1)

SW-4, 23 JAN 2025 to 20 FEB 2025

SW-4, 23 JAN 2025 to 20 FEB 2025