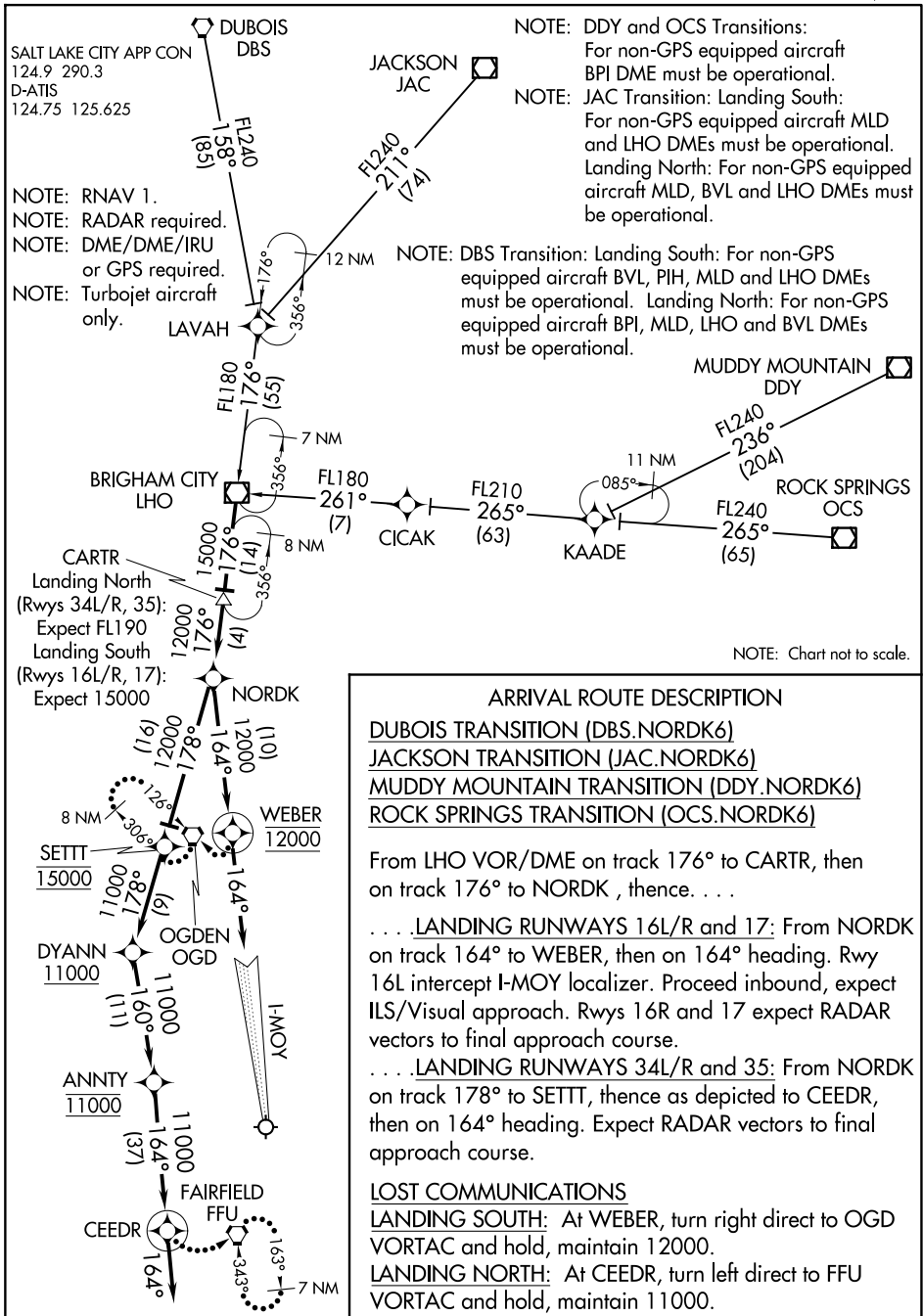


(LHO.NORDK6) 24305

# NORDK SIX ARRIVAL (RNAV)

AL-365 (FAA)

SALT LAKE CITY INTL (SLC)  
SALT LAKE CITY, UTAH



SW-4, 23 JAN 2025 to 20 FEB 2025

SW-4, 23 JAN 2025 to 20 FEB 2025

### ARRIVAL ROUTE DESCRIPTION

- DUBOIS TRANSITION (DBS.NORDK6)
- JACKSON TRANSITION (JAC.NORDK6)
- MUDDY MOUNTAIN TRANSITION (DDY.NORDK6)
- ROCK SPRINGS TRANSITION (OCS.NORDK6)

From LHO VOR/DME on track 176° to CARTR, then on track 176° to NORDK, thence. . .

. . . LANDING RUNWAYS 16L/R and 17: From NORDK on track 164° to WEBER, then on 164° heading. Rwy 16L intercept I-MOY localizer. Proceed inbound, expect ILS/Visual approach. Rwys 16R and 17 expect RADAR vectors to final approach course.

. . . LANDING RUNWAYS 34L/R and 35: From NORDK on track 178° to SETTT, thence as depicted to CEEDR, then on 164° heading. Expect RADAR vectors to final approach course.

### LOST COMMUNICATIONS

LANDING SOUTH: At WEBER, turn right direct to OGD VORTAC and hold, maintain 12000.

LANDING NORTH: At CEEDR, turn left direct to FFU VORTAC and hold, maintain 11000.

# NORDK SIX ARRIVAL (RNAV)

(LHO.NORDK6) 08NOV18

SALT LAKE CITY, UTAH  
SALT LAKE CITY INTL (SLC)