

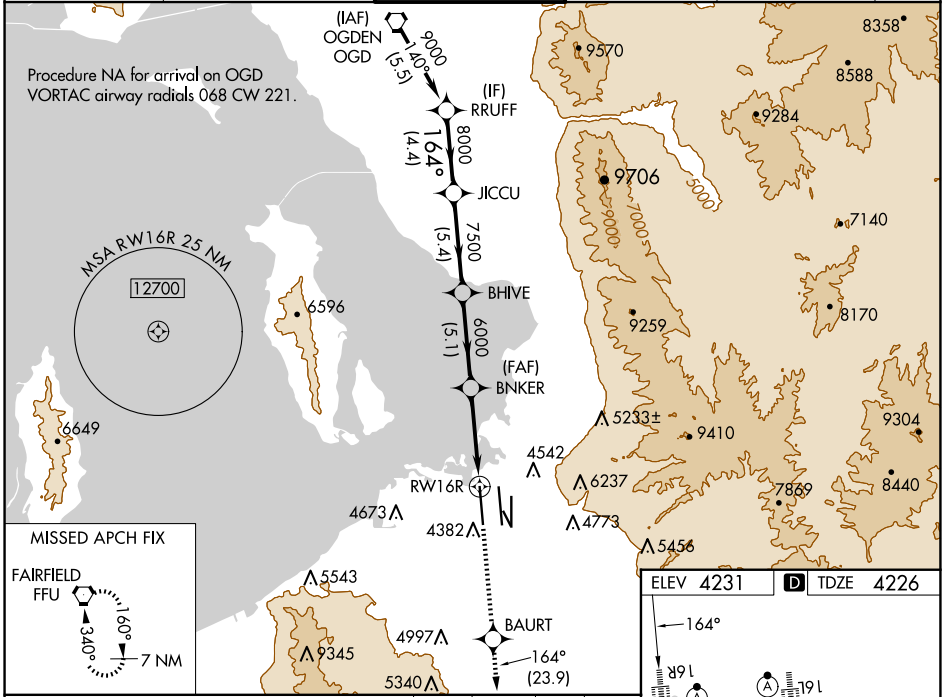
WAAS CH 42746 W16A	APP CRS 164°	Rwy Idg 12000 TDZE 4226 Apt Elev 4231
--	------------------------	--

RNAV (GPS) RWY 16R

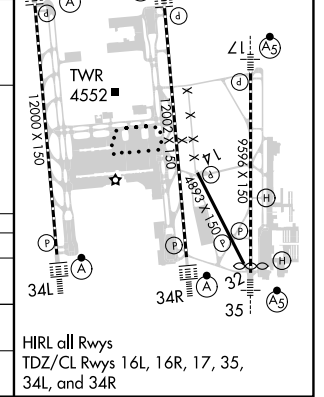
SALT LAKE CITY INTL (SLC)

RNP APCH - GPS. ⚠ Simultaneous approach authorized. LNAV procedure NA during simultaneous operations. Use of FD or AP required during simultaneous operations. For uncompensated Baro-VNAV systems, LNAV/VNAV NA below -10°C or above 46°C. For inop ALS, increase LPV Cat E visibility to RVR 4000, increase LNAV/VNAV Cat E visibility to RVR 6000, and increase LNAV Cat C/D/E visibility to 1½ SM.		ALSF-2 	MISSED APPROACH: Climb to 10000 direct BAURT and on track 164° to FFU VORTAC and hold.
--	--	------------	--

D-ATIS 124.75 125.625	SALT LAKE CITY APP CON 125.7 284.6	SALT LAKE CITY TOWER 132.65 336.4	GND CON 123.775 348.6	CLNC DEL 127.3 379.975	CPDLC
---------------------------------	--	---	---------------------------------	----------------------------------	-------



VGSI and RNAV glidepath not coincident (VGSI Angle 3.00/TCH 73). GP 3.04° TCH 52					
RRUFF	JICCU	BHIVE	BNKER	BAURT	FFU
9000	8000	7500	6000	10000	
4.4 NM		5.4 NM		1.4 NM	
A		B		E	
LPV DA	4426/18		200 (200-½)		
LNAV/VNAV DA	4620/35		394 (400-¾)		
LNAV MDA	4740/24		4740/55		514 (600-1)



SW-4, 23 JAN 2025 to 20 FEB 2025

SW-4, 23 JAN 2025 to 20 FEB 2025