

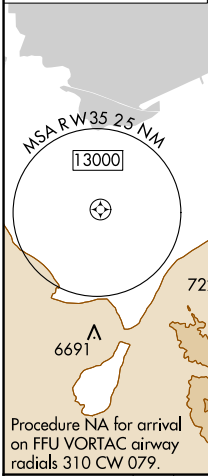
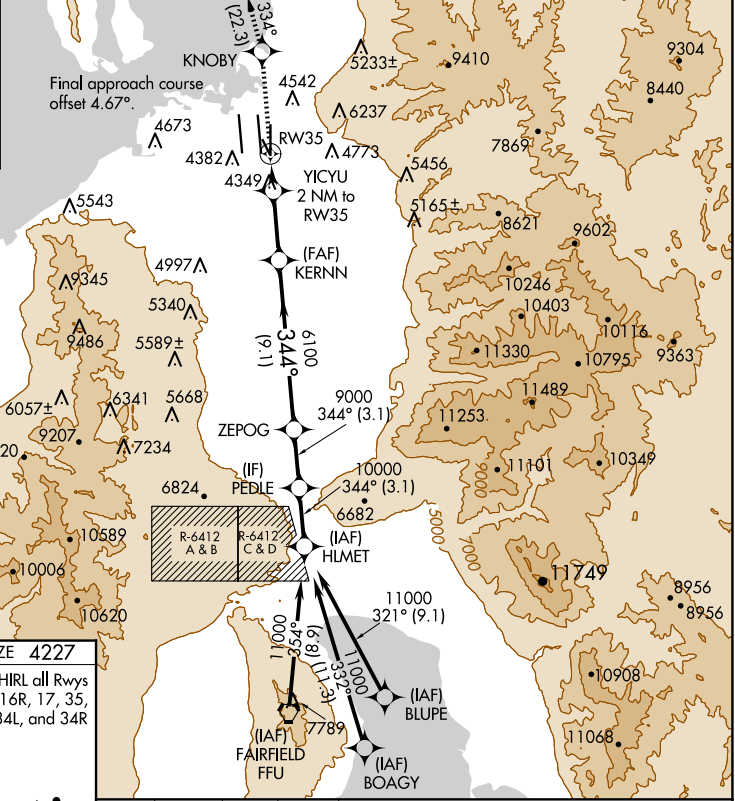
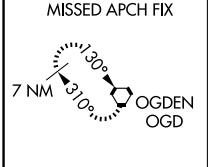
RNAV (GPS) RWY 35

SALT LAKE CITY INTL (SLC)

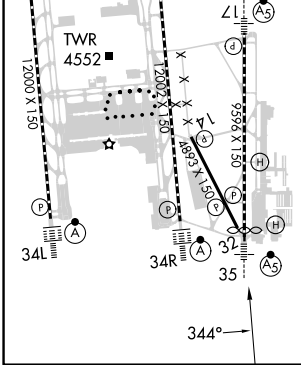
WAAS CH 42843 W35A	APP CRS 344°	Rwy Idg TDZE Apt Elev	9272 4227 4231
--	------------------------	-----------------------------	---

RNP APCH - GPS. ▼ For inop ALS, increase LP Cat C, D and E visibility to RVR 5500, increase LNAV Cat E visibility to 1½ SM.	MALS/R 	MISSED APPROACH: Climb to 9000 direct KNOBY and on track 334° to OGD VORTAC and hold.
--	------------	---

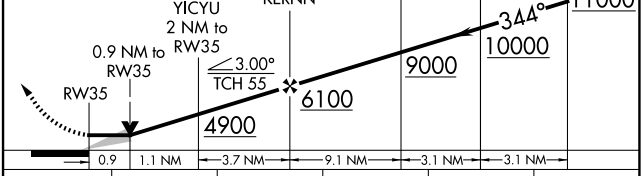
D-ATIS 124.75 125.625	SALT LAKE CITY APP CON 125.7 284.6	SALT LAKE CITY TOWER 118.3 257.8	GND CON 121.9 348.6	CLNC DEL 127.3 379.975	CPDLC
---------------------------------	--	--	-------------------------------	----------------------------------	-------



ELEV 4231	D	TDZE 4227
HIRL all Rwys TDZ/CL Rwys 16L, 16R, 17, 35, 34L, and 34R		



9000	KNOBY	tr	OGD	VGSI and descent angles not coincident (VGSI Angle 3.00/TCH 74).
		334°		



CATEGORY		A	B	C	D	E
LP	MDA	4600/24	373 (400-½)	4600/35	373 (400-½)	
LNAV	MDA	4760/24	533 (600-½)	4760/55	533 (600-1)	

SW-4, 23 JAN 2025 to 20 FEB 2025

SW-4, 23 JAN 2025 to 20 FEB 2025