

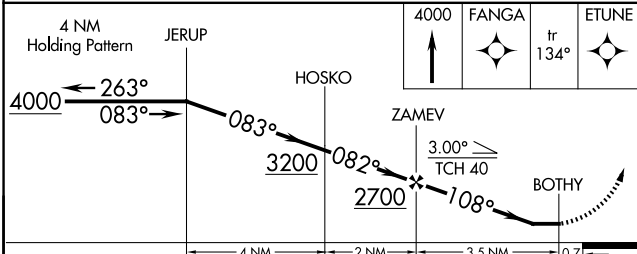
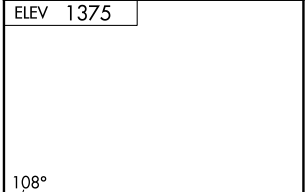
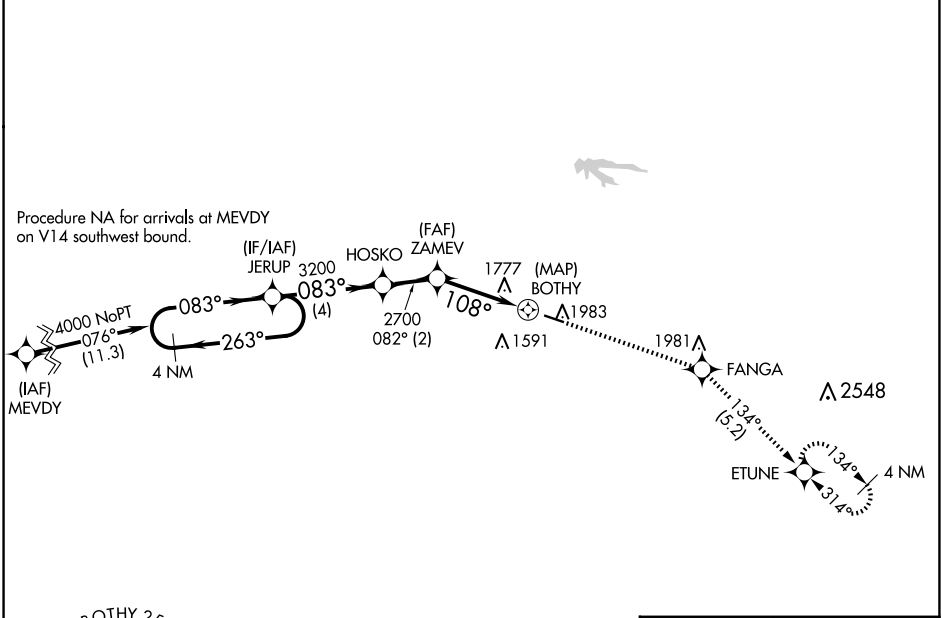
APP CRS <b>108°</b>	Rwy Idg TDZE Apt Elev	<b>N/A</b> <b>N/A</b> <b>1375</b>
------------------------	-----------------------------	---

# RNAV (GPS)-A DOWNTOWN (3DW)

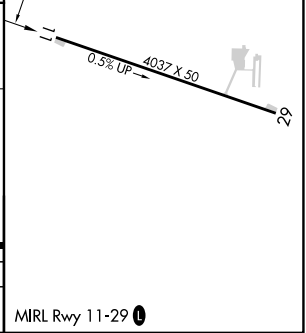
**NA** Circling NA north of Rwy 11-29. DME/DME RNP-0.3 NA.  
 Use Springfield-Branson Nhl altimeter setting; when not received, use Branson West altimeter setting and increase all MDA 60 feet.  
 Procedure NA at night. Helicopter visibility reduction below 1 SM NA.

**MISSED APPROACH:** Climb to 4000 direct FANGA and track 134° to ETUNE and hold.

SPRINGFIELD APP CON <b>124.95 353.925</b>	UNICOM <b>122.8 (CTAF) 0</b>
--	---------------------------------



CATEGORY	A	B	C	D
<b>CIRCLING</b>	2060-1	685 (700-1)	NA	



NC-3, 23 JAN 2025 to 20 FEB 2025

NC-3, 23 JAN 2025 to 20 FEB 2025