

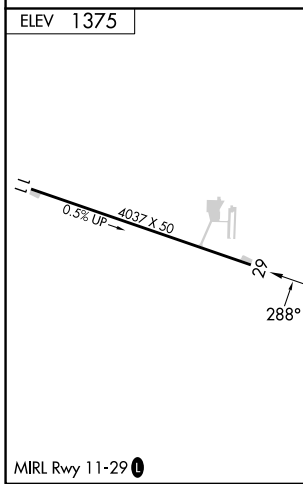
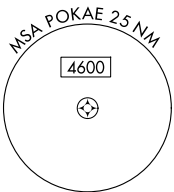
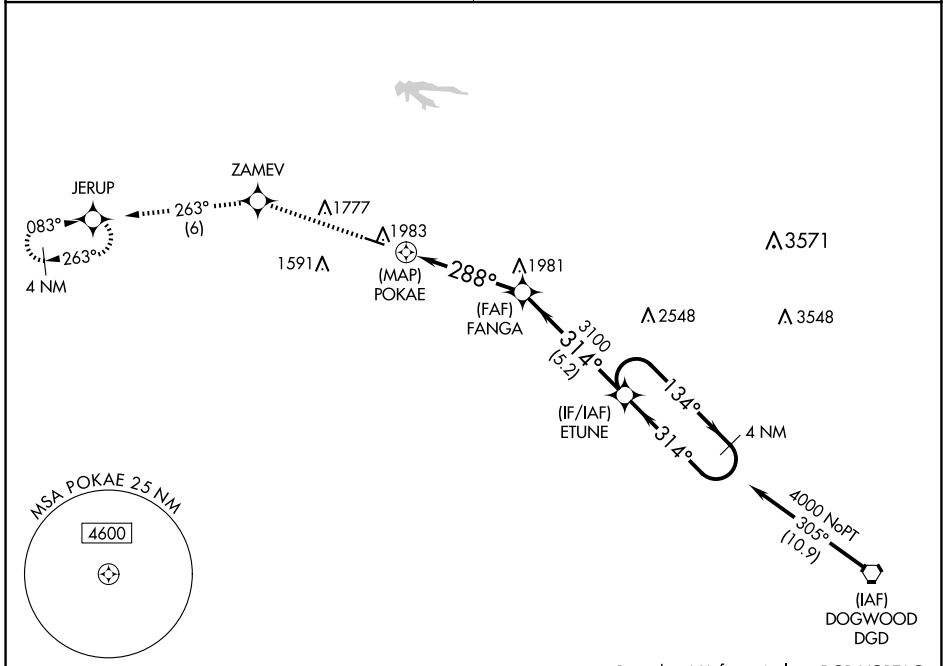
APP CRS 288°	Rwy Idg TDZE Apt Elev	N/A N/A 1375
------------------------	-----------------------------	---

RNAV (GPS)-B DOWNTOWN (3DW)

NA Circling NA north of Rwy 11-29. DME/DME RNP-0.3 NA. Use Springfield-Branson Nil altimeter setting; when not received, use Branson West altimeter setting and increase all MDA 60 feet. Procedure NA at night. Helicopter visibility reduction below 1 SM NA.

MISSED APPROACH: Climb to 4000 direct ZAMEV and track 263° to JERUP and hold.

SPRINGFIELD APP CON 124.95 353.925	UNICOM 122.8 (CTAF) 0
--	---------------------------------



4000	ZAMEV	tr 263°	JERUP	Visual Segment - Obstacles.
				ETUNE 4 NM Holding Pattern
	POKAE		FANGA	
		288°	314°	314°
		0.9 NM	4.4 NM	5.2 NM
CATEGORY	A	B	C	D
C CIRCLING	2280-1¼	905 (1000-1¼)		NA

NC-3, 23 JAN 2025 to 20 FEB 2025

NC-3, 23 JAN 2025 to 20 FEB 2025