

FORT LEWIS, WASHINGTON

# RNAV (GPS) RWY 33

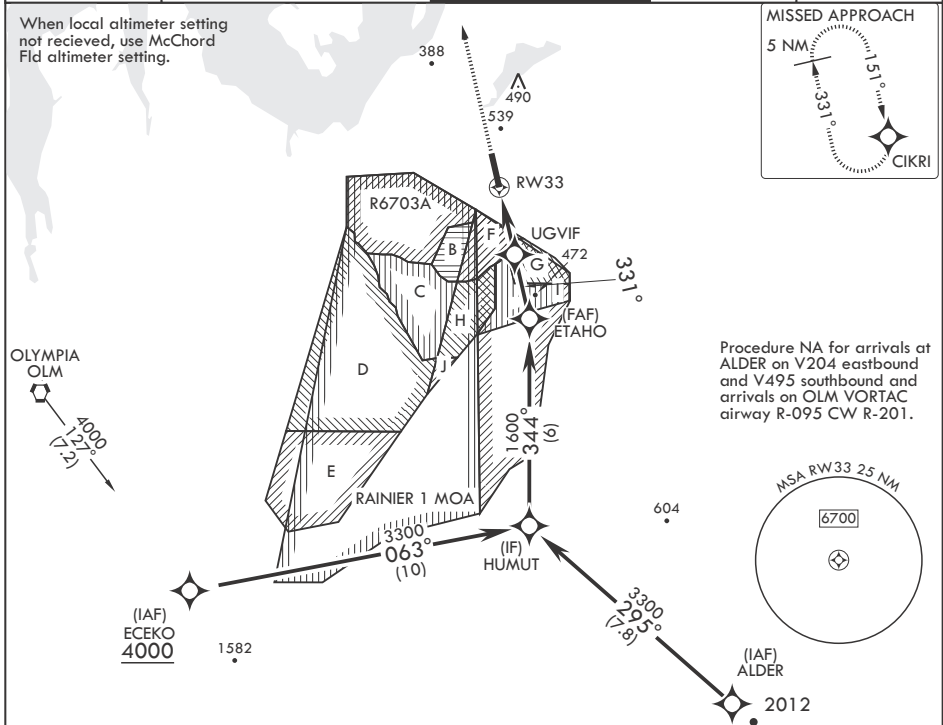
APCH CRS 331°  
Rwy Idg 6124  
TDZE 301  
Arprt Elev 301

-(USA)

GRAY AAF (JOINT BASE LEWIS MCCHORD) (KGRF)

RNP APCH SSALR MISSED APPROACH: Climb to 2000 direct CIKRI and hold.

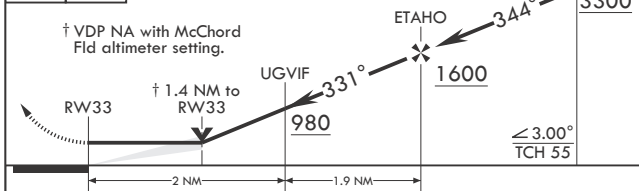
ATIS 124.65 306.2 SEATTLE APP CON/DEP CON 120.1 290.9 TOWER\* 119.325 (CTAF) 256.8 GND CON 121.9 290.2 CLNC DEL 121.9 290.2



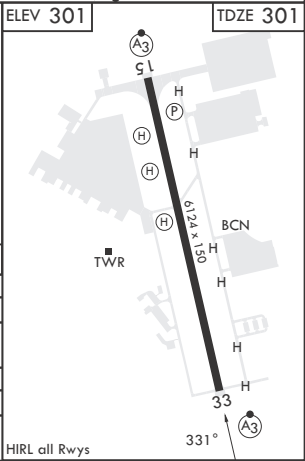
NW-1, 23 JAN 2025 to 20 FEB 2025

NW-1, 23 JAN 2025 to 20 FEB 2025

2000 CIKRI ELEV 301 TDZE 301



CATEGORY	A	B	C	D
LNVA MDA	800-1/2	499 (500-1/2)	800-1	499 (500-1)
<b>C</b> CIRCLING*	840-1	539 (600-1)	840-1 1/2 539 (600-1 1/2)	920-2 619 (700-2)
MC CHORD FLD ALTIMETER SETTING MINIMUMS				
LNVA MDA	820-1/2	519 (600-1/2)	820-1	519 (600-1)
<b>C</b> CIRCLING*	860-1	559 (600-1)	860-1 1/2 559 (600-1 1/2)	940-2 639 (700-2)



FORT LEWIS, WASHINGTON 47°05'N - 122°35'W GRAY AAF (JOINT BASE LEWIS MCCHORD) (KGRF)

Amdt 3 10AUG23

# RNAV (GPS) RWY 33