

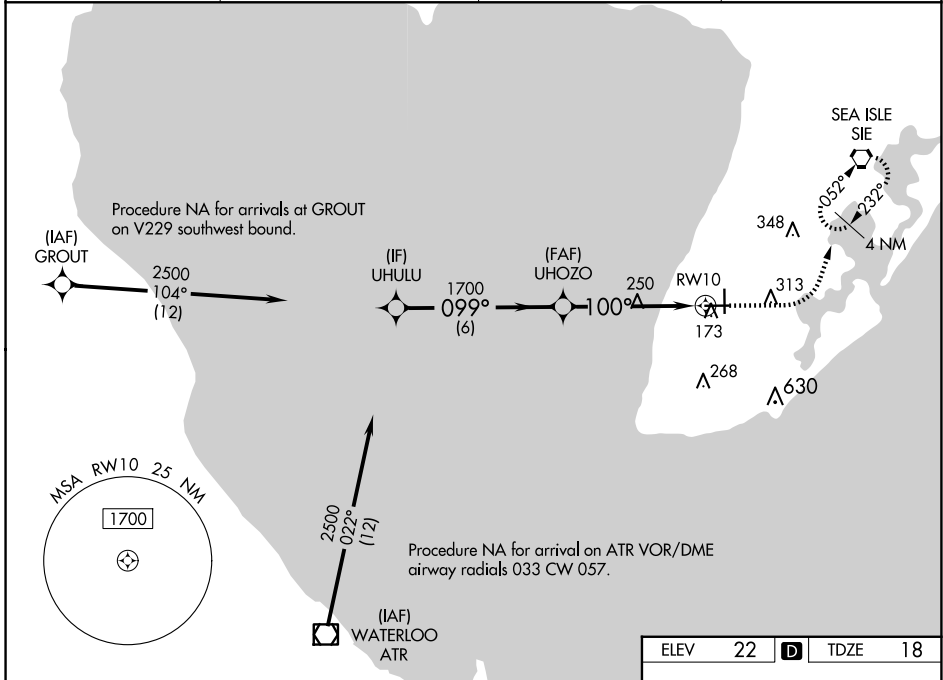
WAAS CH <b>93541</b> <b>W10A</b>	APP CRS <b>100°</b>	Rwy Idg TDZE Apt Elev	<b>5000</b> <b>18</b> <b>22</b>
--	------------------------	-----------------------------	---------------------------------------

# RNAV (GPS) RWY 10

CAPE MAY COUNTY (WWD)

RNP APCH.		MISSED APPROACH: Climb to 500 then climbing left turn to 2000 direct SIE VORTAC and hold.
For uncompensated Baro-VNAV systems, LNAV/VNAV NA below -15° C or above 54° C. Circling NA for Cats C and D northeast of Rwy 19 and 28. Rwy 10 helicopter visibility reduction below 3/4 SM NA. Circling Rwy 1 NA at night.		

AWOS-3PT <b>118.275</b>	ATLANTIC CITY APP CON <b>124.6 327.125</b>	CLNC DEL <b>121.7</b>	UNICOM <b>122.7 (CTAF) 0</b>
----------------------------	---	--------------------------	---------------------------------



NE-2, 23 JAN 2025 to 20 FEB 2025

NE-2, 23 JAN 2025 to 20 FEB 2025

	ELEV	22	D	TDZE	18
VGSIs and RNAV glidepaths not coincident (VGS Angle 3.00/TCH 45).					
UHULU 2500 099°		UHOZO 1700 100°		RWY 10 100°	
GP 3.00° TCH 56 6 NM		* 1.4 NM to RWY 10 3.7 NM		* LNAV only	
CATEGORY	A	B	C	D	
LPV DA	285-7/8		267 (300-7/8)		
LNAV/VNAV DA	336-1		318 (400-1)		
LNAV MDA	500-1	482 (500-1)	500-1 3/8	482 (500-1 3/8)	
CIRCLING	500-1 478 (500-1)	620-1 598 (600-1)	620-1 1/2 598 (600-1 1/2)	980-3 958 (1000-3)	
					HIRL Rwy 1-19 0 MIRL Rwy 10-28 0

