

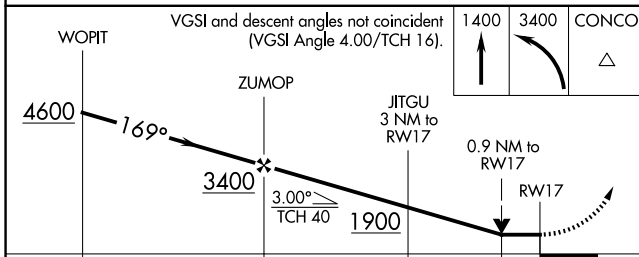
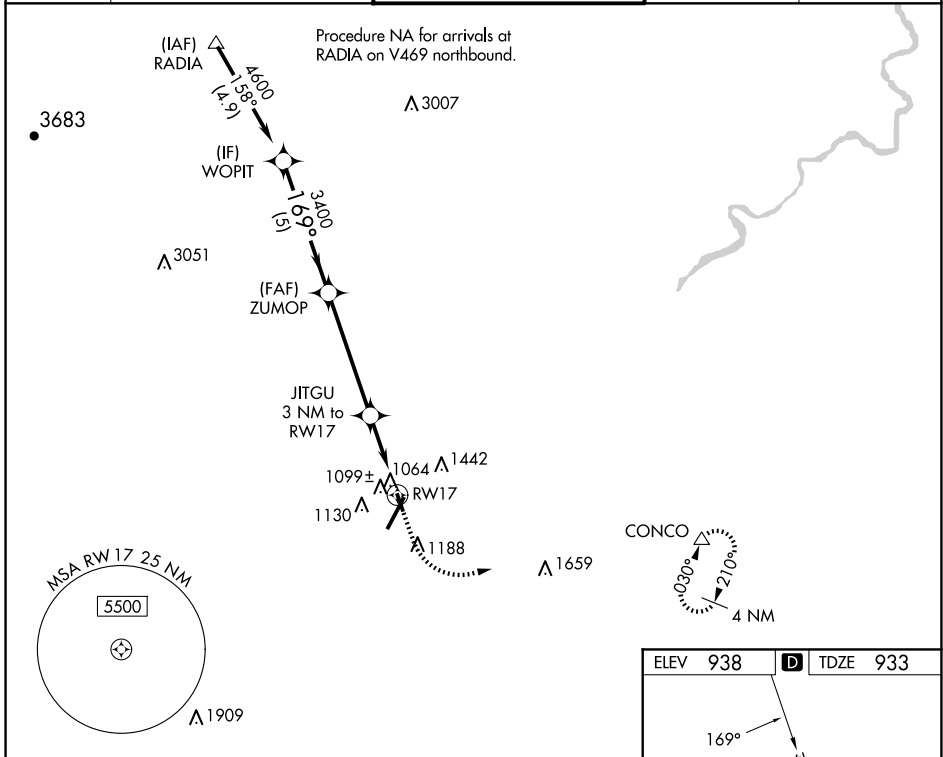
WAAS CH <b>48934</b> <b>W17A</b>	APP CRS <b>169°</b>	Rwy Idg TDZE Apt Elev	<b>3386</b> <b>933</b> <b>938</b>
--	------------------------	-----------------------------	---

# RNAV (GPS) RWY 17

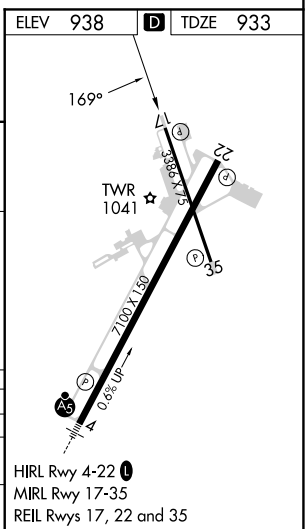
LYNCHBURG RGNL/PRESTON GLENN FLD (LYH)

RNP APCH.	MISSED APPROACH: Climb to 1400 then climbing left turn to 3400 direct CONCO and hold.
<p>▼ Procedure NA at night.</p> <p>▲ Rwy 17 helicopter visibility reduction below 1 SM NA.</p>	

ATIS <b>119.8</b>	ROANOKE APP CON <b>135.0 254.325</b>	LYNCHBURG TOWER ★ <b>127.65 (CTAF) 257.8</b>	GND CON <b>121.9</b>	UNICOM <b>122.95</b>
----------------------	---	---	-------------------------	-------------------------



CATEGORY	A	B	C	D
LP MDA	1320-1	387 (400-1)		NA
LNAV MDA	1360-1	427 (500-1)		NA
<b>C</b> CIRCLING	1660-1 722 (800-1)	1780-1¼ 842 (900-1¼)		NA



NE-3, 23 JAN 2025 to 20 FEB 2025

NE-3, 23 JAN 2025 to 20 FEB 2025