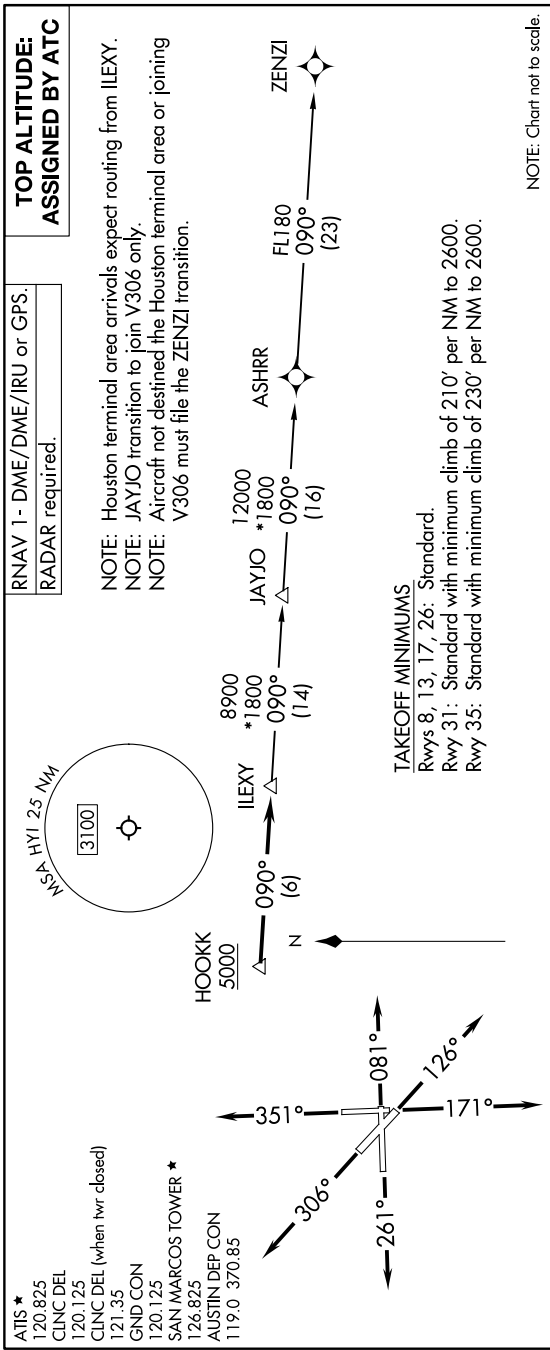


ILEXY FOUR DEPARTURE (RNAV)

SC-3, 23 JAN 2025 to 20 FEB 2025



DEPARTURE ROUTE DESCRIPTION

- TAKEOFF RUNWAY 8: Climb on heading 081° or as assigned by ATC for vectors to cross HOOKK at or above 5000, thence. . . .
 - TAKEOFF RUNWAY 13: Climb on heading 126° or as assigned by ATC for vectors to cross HOOKK at or above 5000, thence. . . .
 - TAKEOFF RUNWAY 17: Climb on heading 171° or as assigned by ATC for vectors to cross HOOKK at or above 5000, thence. . . .
 - TAKEOFF RUNWAY 26: Climb on heading 261° or as assigned by ATC for vectors to cross HOOKK at or above 5000, thence. . . .
 - TAKEOFF RUNWAY 31: Climb on heading 306° or as assigned by ATC for vectors to cross HOOKK at or above 5000, thence. . . .
 - TAKEOFF RUNWAY 35: Climb on heading 351° or as assigned by ATC for vectors to cross HOOKK at or above 5000, thence. . . .
- on track 090° to ILEXY, then on transition. Maintain altitude assigned by ATC. Expect filed altitude 10 minutes after departure.

JAYJO TRANSITION (ILEXY4.JAYJO)
ZENZI TRANSITION (ILEXY4.ZENZI)

SC-3, 23 JAN 2025 to 20 FEB 2025