

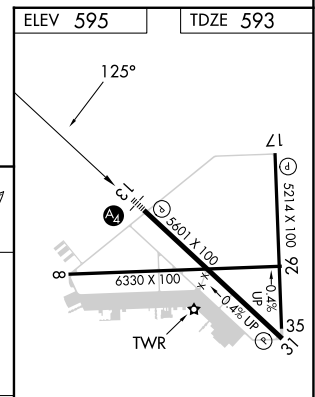
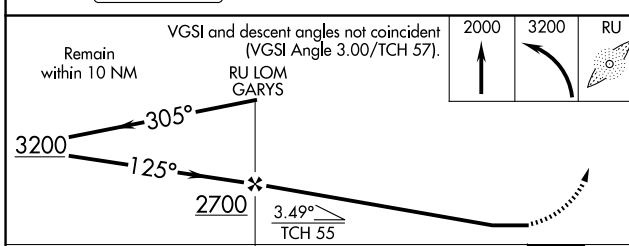
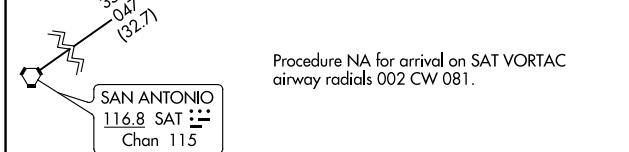
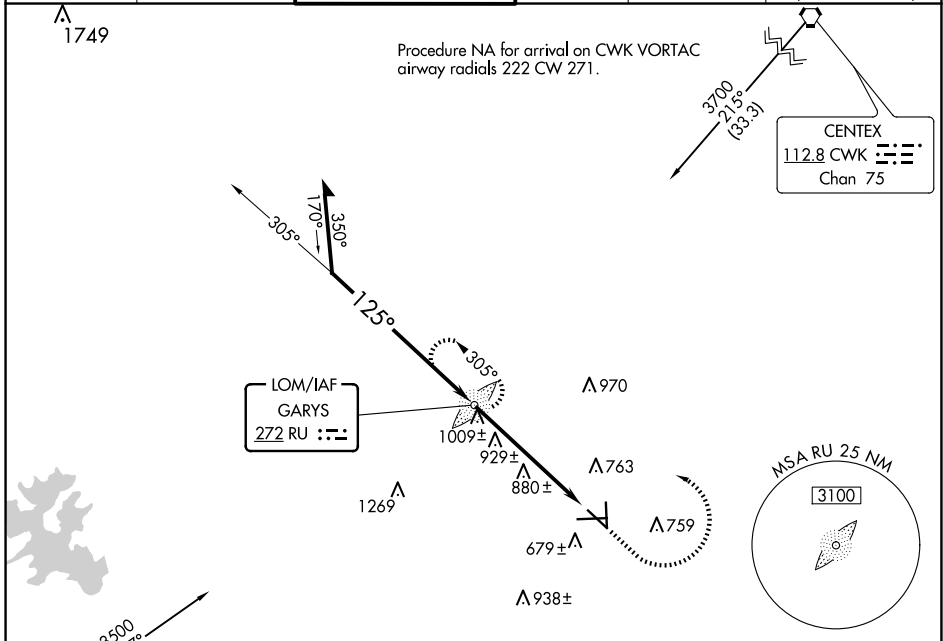
LOM RU	APP CRS	Rwy Idg TDZE	5601
<u>272</u>	<u>125°</u>	Apt Elev	593
			595

# NDB RWY 13

SAN MARCOS RGNL (HYI)

		MALS 	MISSED APPROACH: Climb to 2000 then climbing left turn to 3200 direct GARYS LOM and hold.		
--	--	----------	---	--	--

ATIS ★ <b>120.825</b>	AUSTIN APP CON <b>119.0 370.85</b>	SAN MARCOS TOWER★ <b>126.825</b> (CTAF)	GND CON <b>120.125</b>	CLNC DEL <b>120.125</b>	CLNC DEL <b>121.35</b> (when twr closed)
--------------------------	---------------------------------------	--	---------------------------	----------------------------	--



ELEV 595		TDZE 593	
CATEGORY	A	B	C
S-13	1240-3/4 647 (700-3/4)	1240-1 5/8 647 (700-1)	1240-1 7/8 647 (700-1)
CIRCLING	1240-1 645 (700-1)	1240-1 7/8 645 (700-1)	1320-2 1/4 725 (800-2 1/4)
MIRL Rwy 8-26, 13-31, and 17-35			
FAF to MAP 5.5 NM			
Knots	60	90	120
Min:Sec	5:30	3:40	2:45
		150	180
		2:12	1:50

SC-3, 23 JAN 2025 to 20 FEB 2025

SC-3, 23 JAN 2025 to 20 FEB 2025