


LOC/DME I-JQX 108.9 Chan 26	APP CRS 178°	Rwy Idg 6499 TDZE 965 Apt Elev 978
---	------------------------	---

ILS or LOC RWY 18

JOPLIN RGNL (JLN)

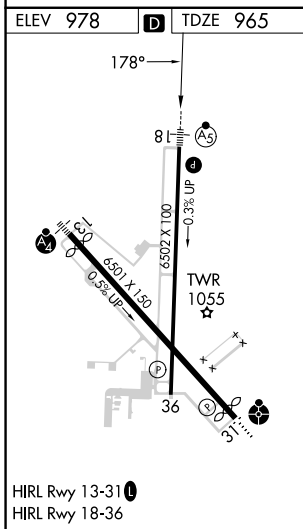
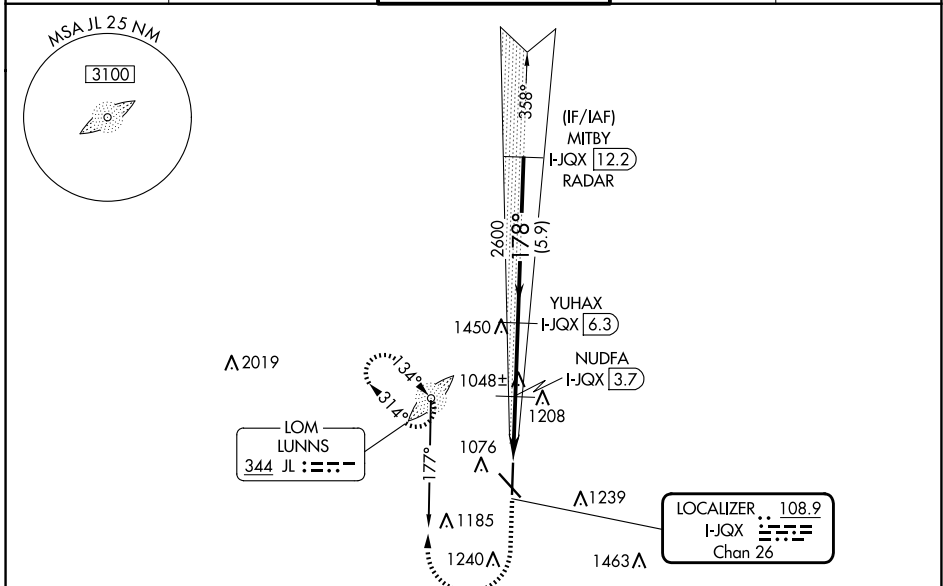
ADF required. DME required for LOC only. RADAR required for procedure entry.

⚠ For inop ALS, increase S-ILS 18# all Cats visibility to RVR 4500 and S-LOC 18 Cat C/D visibility to RVR 5500.

MALS 

MISSED APPROACH: Climb to 1460 then climbing right turn to 3100 on LUNNS LOM bearing 177° to LUNNS LOM and hold, continue climb-in-hold to 3100. S-ILS 18* missed approach requires minimum climb of 204 feet per NM to 2240. (If unable to meet climb gradient use S-ILS 18# minimums).

ATIS 120.85	KANSAS CITY CENTER 128.6 282.325	JOPLIN TOWER* 119.8 (CTAF) 0	GND CON 121.6	UNICOM 122.95
-----------------------	--	---	-------------------------	-------------------------



	1460	3100	JL	MITBY
	JL 177°	JL 177°	JL 177°	JL 177°
	I-JQX 1.3	I-JQX 2.3	I-JQX 3.7	I-JQX 6.3
	1.1 NM	1.3 NM	2.6 NM	5.9 NM
	1760	2600	2600	3100
				GS 3.00°
				TCH 46
CATEGORY	A	B	C	D
S-ILS 18*	1165/24		200 (200-1/2)	
S-ILS 18#	1240/24		275 (300-1/2)	
S-LOC 18	1340/24	375 (400-1/2)	1340/35	375 (400-5/8)
C CIRCLING	1420-1 442 (500-1)	1480-1 502 (600-1)	1540-1 3/4 562 (600-1 3/4)	1600-2 622 (700-2)

NC-3, 23 JAN 2025 to 20 FEB 2025

NC-3, 23 JAN 2025 to 20 FEB 2025