

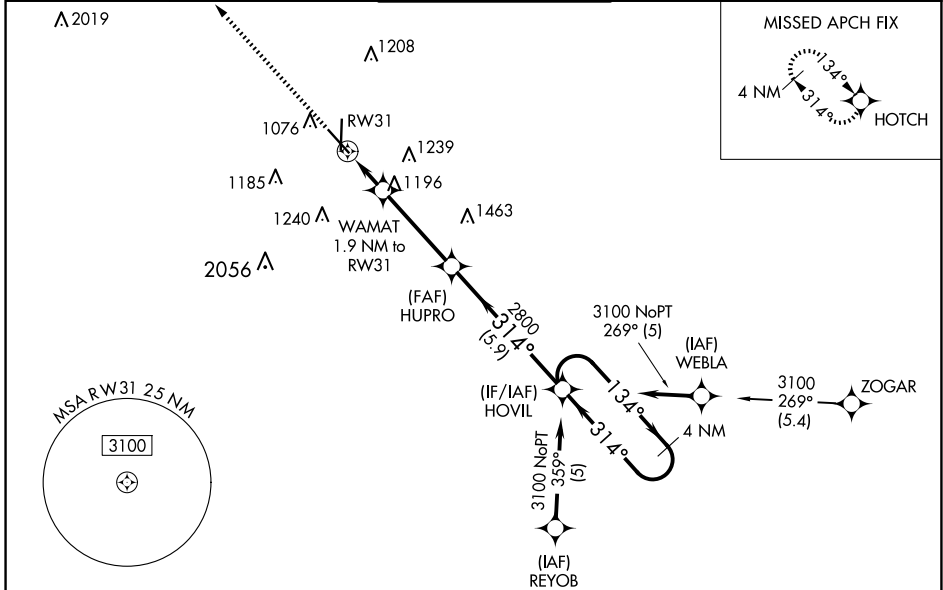
WAAS CH <b>69334</b> <b>W31A</b>	APP CRS <b>314°</b>	Rwy Idg TDZE Apt Elev	<b>5813</b> <b>978</b> <b>978</b>
--	------------------------	-----------------------------	---

# RNAV (GPS) RWY 31

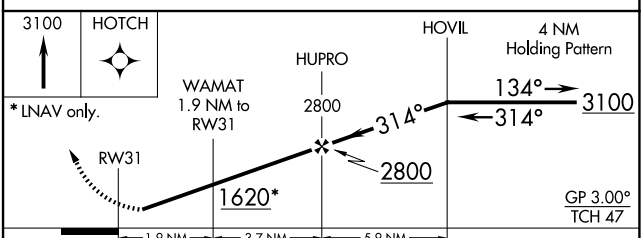
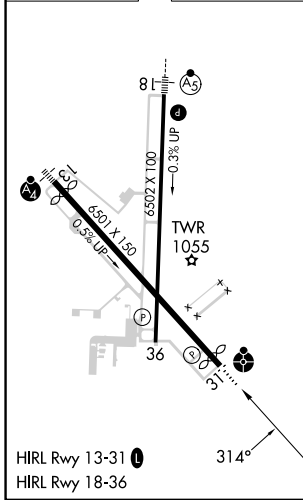
JOPLIN RGNL (JLN)

RNP APCH-GPS.		ODALS ⬇	MISSED APPROACH: Climb to 3100 direct HOTCH and hold.
<p>⚠ For uncompensated Baro-VNAV systems, LNAV/VNAV NA below -16°C or above 54°C. Inoperative table does not apply. Rwy 31 helicopter visibility reduction below 3/4 SM NA.</p>			

ATIS <b>120.85</b>	KANSAS CITY CENTER <b>128.6 282.325</b>	JOPLIN TOWER* <b>119.8 (CTAF) 0</b>	GND CON <b>121.6</b>	UNICOM <b>122.95</b>
-----------------------	--	--	-------------------------	-------------------------



ELEV 978	<b>D</b> TDZE 978
----------	-------------------



CATEGORY	A		B	C	D
	LPV DA	1229-3/4		251 (300-3/4)	
LNAV/VNAV DA	1357-1 1/4		379 (400-1 1/4)		
LNAV MDA	1500-1	522 (600-1)	1500-1 1/2	522 (600-1 1/2)	
<b>C</b> CIRCLING	1500-1	522 (600-1)	1540-1 1/2 562 (600-1 1/2)	1600-2 622 (700-2)	

NC-3, 23 JAN 2025 to 20 FEB 2025

NC-3, 23 JAN 2025 to 20 FEB 2025