

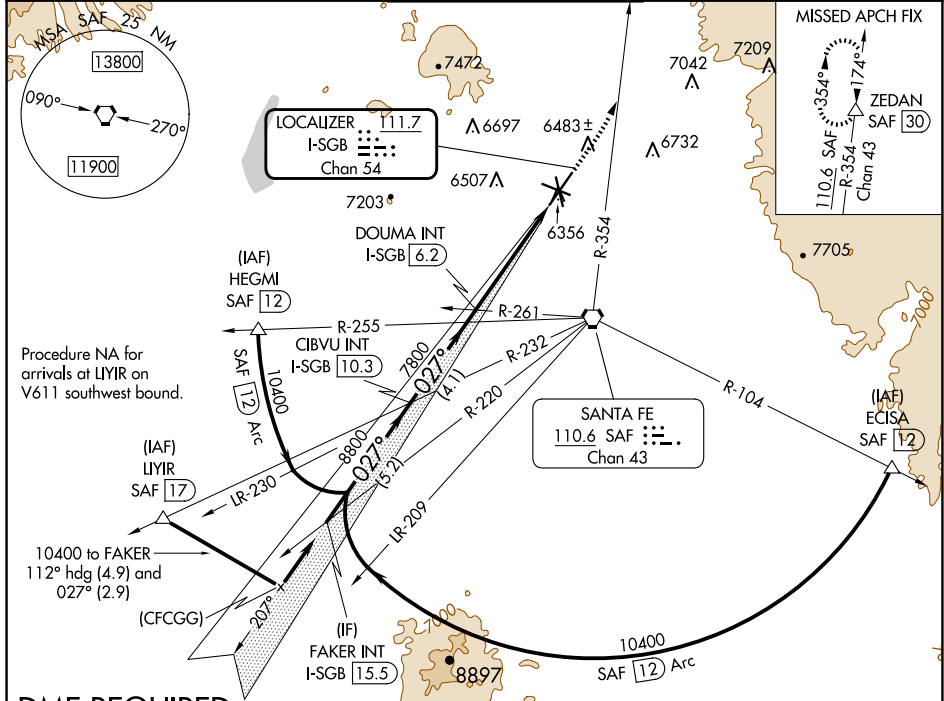
LOC/DME I-SGB	APP CRS	Rwy Idg TDZE	8366
111.7	027°	6303	
Chan 54		Apt Elev	6349

ILS or LOC RWY 2

SANTA FE RGNL (SAF)

V A	DME required.	MISSED APPROACH: Climb to 7300 then climbing left turn to 11000 on SAF VORTAC R-354 to ZEDAN/SAF 30 DME and hold.
----------------------	---------------	---

ATIS 128.55	ALBUQUERQUE CENTER 132.8 346.35	SANTA FE TOWER ★ 119.5 (CTAF) 239.3	GND CON 121.7	UNICOM 122.95
-----------------------	---	---	-------------------------	-------------------------

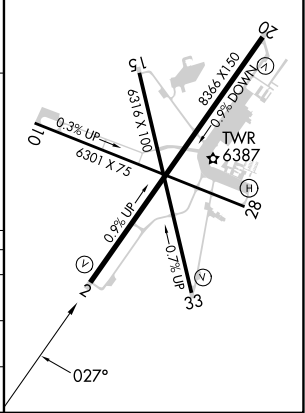
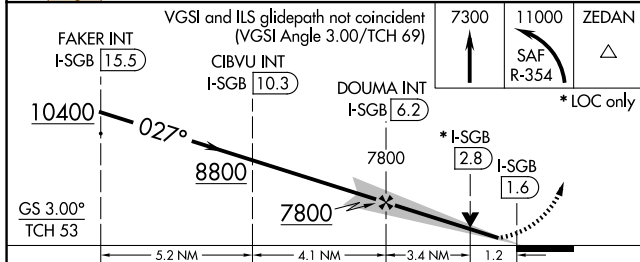


SW-1, 23 JAN 2025 to 20 FEB 2025

SW-1, 23 JAN 2025 to 20 FEB 2025

DME REQUIRED

ELEV 6349	TDZE 6303
REIL Rwy 10, 15, 20 and 33	MIRL Rwy 2-20 and 15-33



CATEGORY	A	B	C	D
S-ILS 2	6503-¾ 200 (200-¾)			
S-LOC 2	6740-1	437 (400-1)	6740-1¼	437 (400-1¼)
CIRCLING	6800-1 451 (500-1)	6920-1 571 (600-1)	7340-3 991 (1000-3)	7660-3 1311 (1400-3)