

(SZAGI.SZAGI1) 24249

AL-556 (FAA)

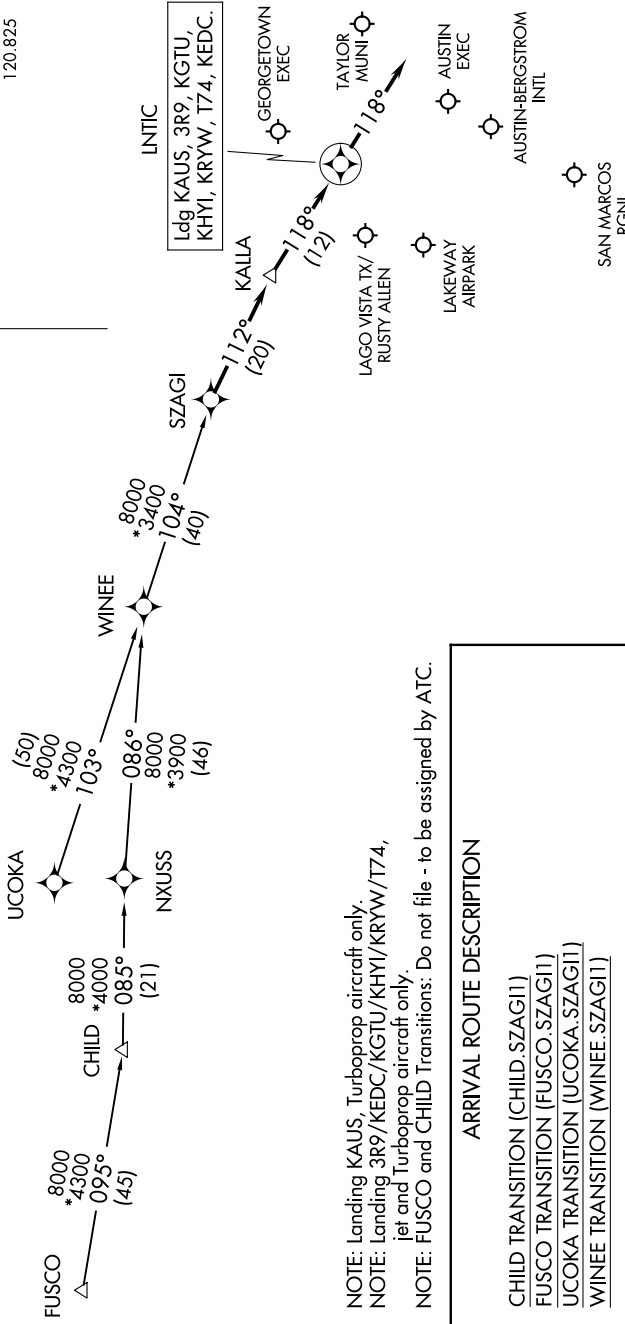
# SZAGI ONE ARRIVAL (RNAV)

AUSTIN, TEXAS

SC-3, 23 JAN 2025 to 20 FEB 2025

RNAV 1 - DME/DME/IRU or GPS.  
RADAR required.

AUSTIN APP CON  
118.15 350.25 (SFC-7000)  
119.0 370.85 (8000-12000)  
AUS D-ATIS  
124.4  
GTU ATIS  
118.6  
HYI ATIS \*  
120.825



LINTIC  
Ldg KAUS, 3R9, KGJTU,  
KHYI, KRYW, T74, KEDC.

NOTE: Landing KAUS, Turboprop aircraft only.  
NOTE: Landing 3R9/KEDC/KGJTU/KHYI/KRYW/T74,  
jet and Turboprop aircraft only.  
NOTE: FUSCO and CHILD Transitions: Do not file - to be assigned by ATC.

**ARRIVAL ROUTE DESCRIPTION**

CHILD TRANSITION (CHILD.SZAGI1)  
 FUSCO TRANSITION (FUSCO.SZAGI1)  
 UCOKA TRANSITION (UCOKA.SZAGI1)  
 WINEE TRANSITION (WINEE.SZAGI1)

**LANDING ALL AIRPORTS:** From SZAGI on track 112° to KALLA, then on track 118° to LINTIC, then on track 118°. Expect RADAR vectors to final approach course.

NOTE: Chart not to scale.

# SZAGI ONE ARRIVAL (RNAV)

(SZAGI.SZAGI1) 05SEP24

AUSTIN, TEXAS

SC-3, 23 JAN 2025 to 20 FEB 2025