

WAAS CH 90132 W06A	APP CRS 060°	Rwy ldg TDZE Apt Elev	5188 586 592
--	------------------------	-----------------------------	---

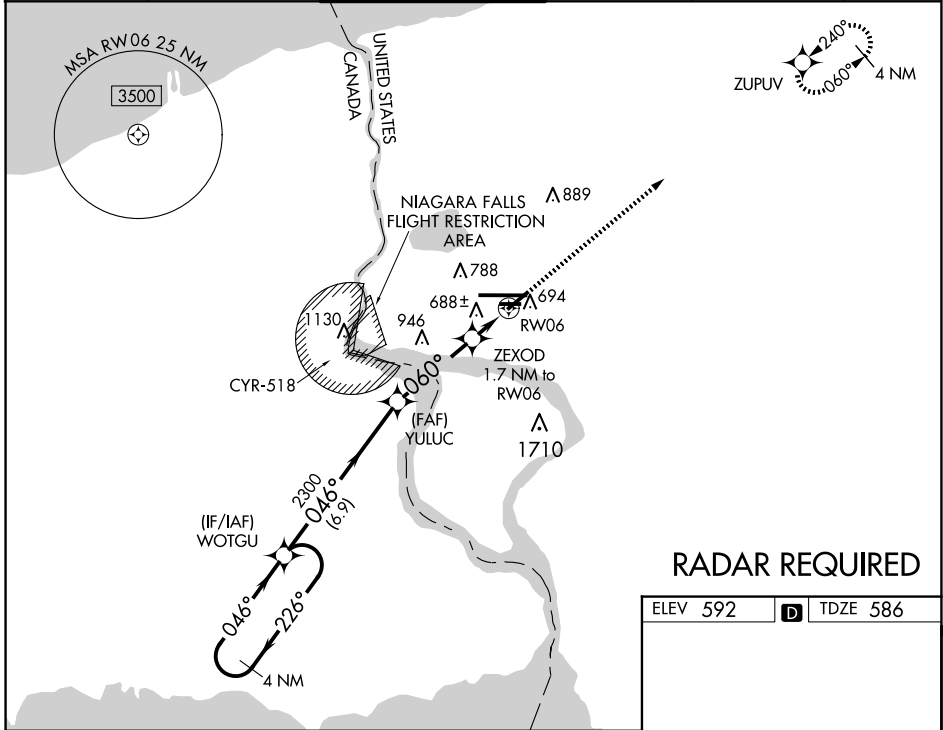
RNAV (GPS) RWY 6

NIAGARA FALLS INTL (IAG)

RNP APCH.
 ▼ Baro-VNAV NA when using Buffalo Niagara Intl altimeter setting. For uncompensated Baro-VNAV systems, LNAV/VNAV NA below -18°C (0°F) or above 54°C (130°F). When local altimeter setting not received, use Buffalo Niagara Intl altimeter setting and increase all DA 51 feet and all MDA 60 feet, increase LNAV Cat C and D visibility ½ SM and Circling Cat C and D ¼ SM. Rwy 6, 10R, 24, 28L helicopter visibility reduction below 1 SM NA. Straight-in Rwy 6 NA at night, Circling Rwy 6, 10R, 24, 28L NA at night.

▲ **MISSED APPROACH:** Climb to 3600 direct ZUPOV and hold.

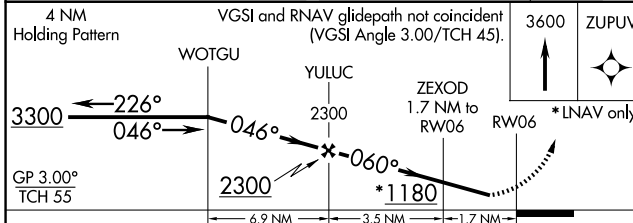
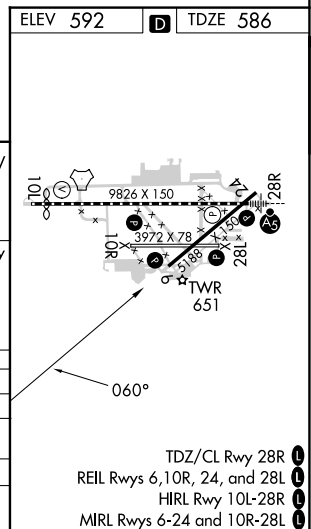
ATIS 120.8 269.4	BUFFALO APP CON 126.5 317.6	NIAGARA TOWER* 118.5 (CTAF) 0 349.0	GND CON 125.3 275.8	CLNC DEL 119.25 251.1	UNICOM 122.95
----------------------------	---------------------------------------	---	-------------------------------	---------------------------------	-------------------------



NE-2, 23 JAN 2025 to 20 FEB 2025

NE-2, 23 JAN 2025 to 20 FEB 2025

RADAR REQUIRED



CATEGORY	A	B	C	D
LPV DA		864-1	278 (300-1)	
LNAV/VNAV DA		849-1	263 (300-1)	
LNAV MDA		940-1	354 (400-1)	
C CIRCLING	1100-1 508 (600-1)		1280-2 688 (700-2)	1280-2¼ 688 (700-2¼)

- TDZ/CL Rwy 28R 1
- REIL Rws 6, 10R, 24, and 28L 1
- HIRL Rwy 10L-28R 1
- MIRL Rws 6-24 and 10R-28L 1