

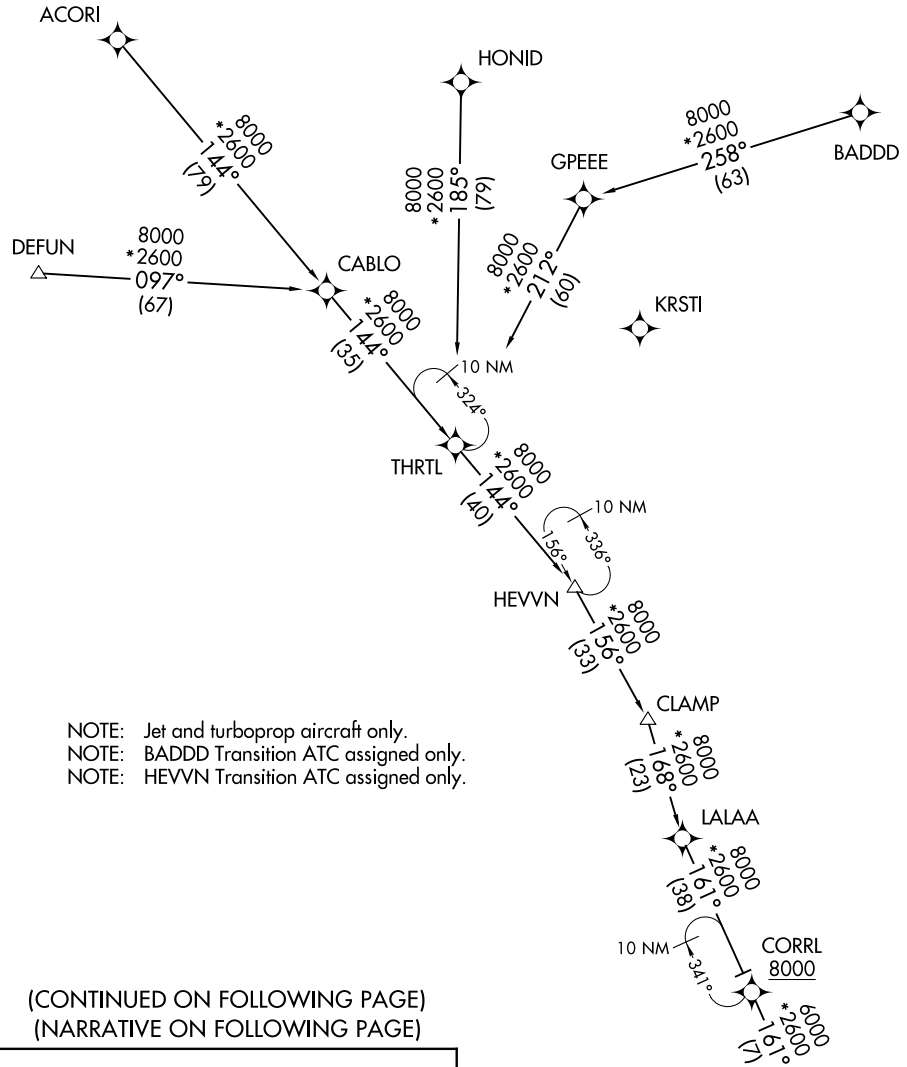
# BANGZ ONE ARRIVAL (RNAV)

ST PETERSBURG-CLEARWATER, FLORIDA

RNAV 1 - DME/DME/IRU or GPS.

RADAR required.


TAMPA APP CON  
118.8 239.3  
PIE ATIS  
134.5  
SRQ ATIS  
124.375



- NOTE: Jet and turboprop aircraft only.
- NOTE: BADD Transition ATC assigned only.
- NOTE: HEVVN Transition ATC assigned only.

(CONTINUED ON FOLLOWING PAGE)  
(NARRATIVE ON FOLLOWING PAGE)

- ACORI TRANSITION (ACORI.BANGZ1)
- BADD TRANSITION (BADD.BANGZ1)
- DEFUN TRANSITION (DEFUN.BANGZ1)
- HEVVN TRANSITION (HEVVN.BANGZ1)
- HONID TRANSITION (HONID.BANGZ1)


  
**BANGZ**  
 13000  
 7000  
 See following page  
 for arrival routes.

NOTE: Chart not to scale.

SE-3, 23 JAN 2025 to 20 FEB 2025

SE-3, 23 JAN 2025 to 20 FEB 2025