

WAAS CH <b>58217</b> <b>W02A</b>	APP CRS <b>020°</b>	Rwy Idg TDZE Apt Elev	<b>5001</b> <b>449</b> <b>469</b>
--	------------------------	-----------------------------	---

# RNAV (GPS) RWY 2

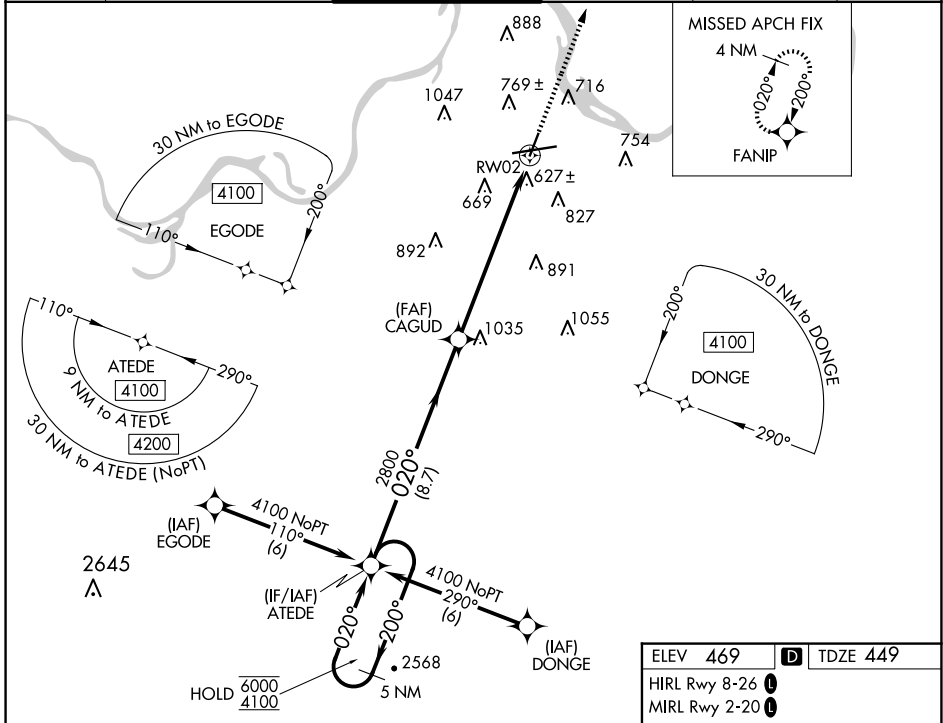
FORT SMITH RGNL (FSM)

RNP APCH - GPS.

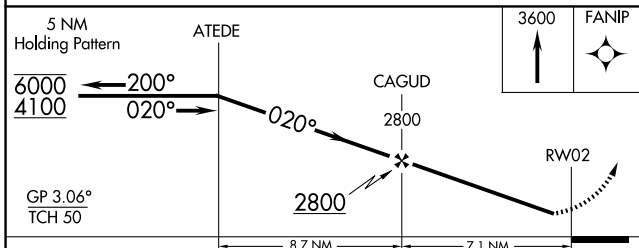
**⚠** Circling to Rwy 20 and 26 NA at night. Rwy 2 helicopter visibility reduction below 3/4 SM NA. For uncompensated Baro-VNAV systems, LNAV/VNAV NA below -15°C or ASR above 54°C.

**MISSED APPROACH:** Climb to 3600 direct FANIP and hold, continue climb-in-hold to 3600.

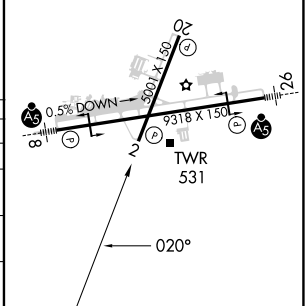
ATIS <b>124.775</b>	RAZORBACK APP CON * <b>120.9 343.75</b>	FORT SMITH TOWER * <b>118.3 (CTAF) 323.175</b>	GND CON <b>121.9 275.8</b>	CLNC DEL <b>133.85 278.3</b>	UNICOM <b>122.95</b>
------------------------	--	---	-------------------------------	---------------------------------	-------------------------



ELEV 469	<b>D</b> TDZE 449
HIRL Rwy 8-26	<b>1</b>
MIRL Rwy 2-20	<b>1</b>



CATEGORY	A	B	C	D
LPV DA		705-1	256 (300-1)	
LNAV/VNAV DA		942-1 3/4	493 (500-1 3/4)	
LNAV MDA	1160-1 711 (700-1)	1160-2 711 (700-2)	1160-2 1/4 711 (700-2 1/4)	
<b>C</b> CIRCLING	1160-1 691 (700-1)	1400-2 3/4 931 (1000-2 3/4)	1400-3 931 (1000-3)	



SC-1, 23 JAN 2025 to 20 FEB 2025

SC-1, 23 JAN 2025 to 20 FEB 2025