

(NOKXI2.NOKXI) 24137

NOKXI TWO DEPARTURE (RNAV)

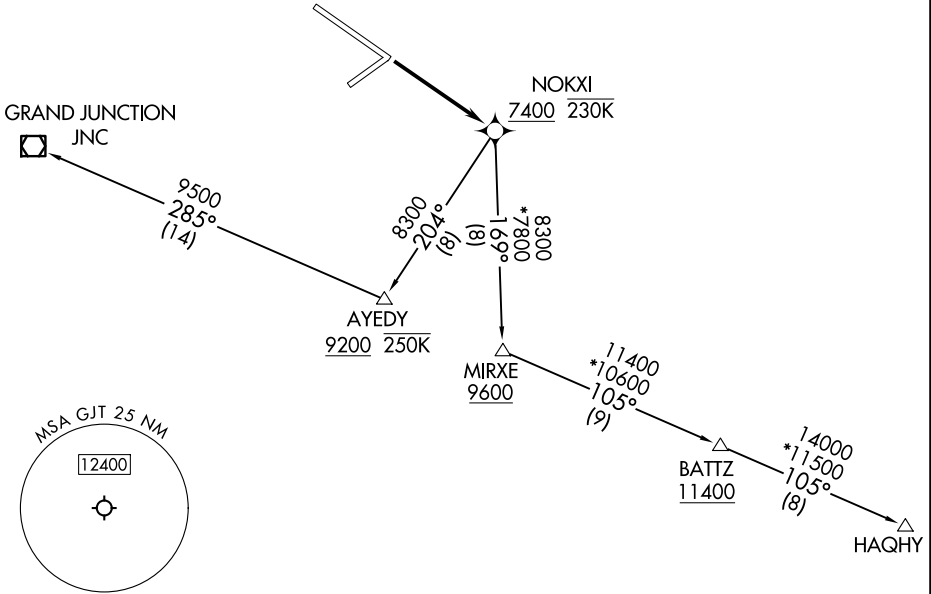
AL-634 (FAA)

GRAND JUNCTION RGNL (GJT)
GRAND JUNCTION, COLORADO

**TOP ALTITUDE:
ASSIGNED BY ATC**

RNAV 1 - GPS.

DENVER DEP CON *
119.7 317.4
ATIS
118.55
GND CON
121.7 257.8
GRAND JUNCTION TOWER *
118.1 257.8
UNICOM
122.95



SW-1, 23 JAN 2025 to 20 FEB 2025

SW-1, 23 JAN 2025 to 20 FEB 2025

TAKEOFF MINIMUMS

Rwys 4, 22, 29: NA - Environmental.
Rwy 11: Standard with minimum climb of 500'/NM to 5361.

NOTE: GRAND JUNCTION Transition: Do not exceed 250K until AYEDY.

NOTE: Chart not to scale.

DEPARTURE ROUTE DESCRIPTION

TAKEOFF RUNWAY 11: Climb direct NOKXI, thence. . . .

. . . .(transition). Maintain ATC assigned altitude, expect filed altitude 10 minutes after departure.

GRAND JUNCTION TRANSITION (NOKXI2.JNC)

HAQHY TRANSITION (NOKXI2.HAQHY)

NOKXI TWO DEPARTURE (RNAV)
(NOKXI2.NOKXI) 16MAY24

GRAND JUNCTION, COLORADO
GRAND JUNCTION RGNL (GJT)