

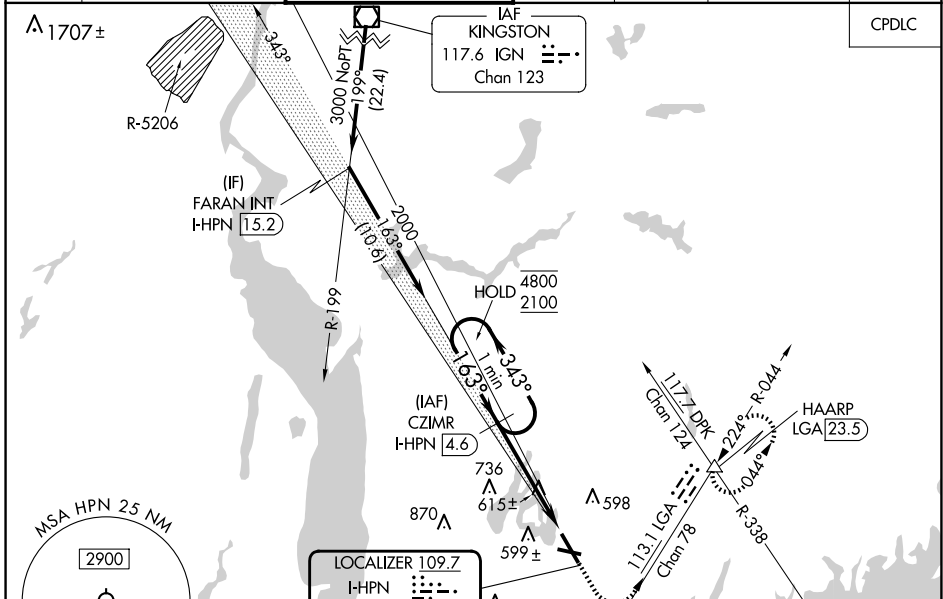
LOC/DME I-HPN <b>109.7</b> Chan <b>34</b>	APP CRS <b>163°</b>	Rwy Idg <b>6549</b> TDZE <b>439</b> Apt Elev <b>439</b>
---	------------------------	---

# ILS RWY 16 (SA CAT I & II)

WESTCHESTER COUNTY (HPN)

<p><b>▽</b> SA CAT I: Requires specific OPSPEC, MSPEC, or LOA approval and use of HUD to DH.</p> <p><b>△</b> SA CAT II: Reduced lighting: Requires specific OPSPEC, MSPEC, or LOA approval and use of autoland or HUD to touchdown. Procedure NA when tower closed.</p>	<p>MALSR</p>	<p>MISSED APPROACH: Climb to 1000 then climbing left turn to 3000 on heading 150° and LGA VOR/DME R-044 to HAARP INT/LGA 23.5 DME and hold, continue climb-in-hold to 3000.</p>
---	--------------	---

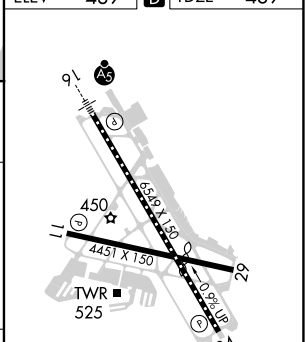
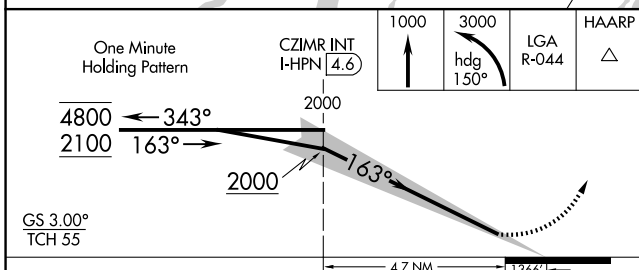
D-ATIS <b>133.8</b>	NEW YORK APP CON <b>120.8 126.4 257.65</b>	WESTCHESTER TOWER ★ <b>118.575 (CTAF) 0 284.65</b>	GND CON <b>121.825</b>	CLNC DEL <b>127.25</b>	CLNC DEL <b>126.4</b> (when twr closed)	UNICOM <b>122.95</b>
------------------------	---	---	---------------------------	---------------------------	---	-------------------------



NE-2, 23 JAN 2025 to 20 FEB 2025

NE-2, 23 JAN 2025 to 20 FEB 2025

ELEV 439	<b>D</b> TDZE 439
----------	-------------------



CATEGORY	A	B	C	D
S-ILS 16		SA CAT I RA 198/14	150 DA 589	
S-ILS 16		SA CAT II RA 113/12	100 DA 539	

**SA CATEGORY I & II SPECIAL AIRCREW & AIRCRAFT CERTIFICATION REQUIRED**

- MIRL Rwy 11-29 **0**
- HIRL Rwy 16-34 **0**
- REIL Rwy 11 and 34 **0**
- TDZ/CL Rwy 16 **0**