

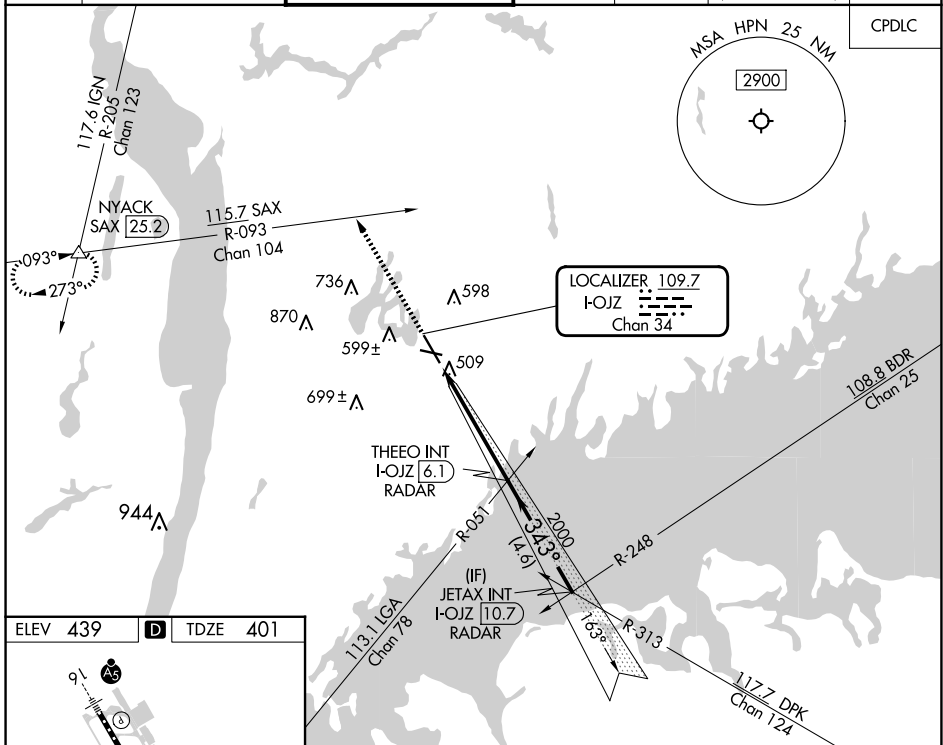
LOC/DME I-OJZ 109.7 Chan 34	APP CRS 343°	Rwy Idg 6549 TDZE 401 Apt Elev 439
--	------------------------	---

ILS or LOC RWY 34

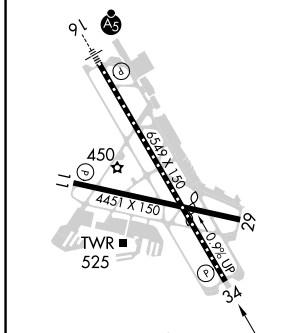
WESTCHESTER COUNTY (HPN)

RADAR required for procedure entry.		MISSED APPROACH: Climb to 3000 on heading 343° and SAX R-093 to NYACK INT/SAX 25.2 DME and hold.				
<p>▼ Circling Rwy 11, 29 NA at night.</p> <p>▲ Rwy 34 helicopter visibility reduction below ¾ SM NA.</p>						

D-ATIS 133.8	NEW YORK APP CON 120.8 126.4 257.65	WESTCHESTER TOWER ★ 118.575 (CTAF) 284.65	GND CON 121.825	CLNC DEL 127.25	CLNC DEL 126.4 (when twr closed)	UNICOM 122.95
------------------------	---	---	---------------------------	---------------------------	---	-------------------------



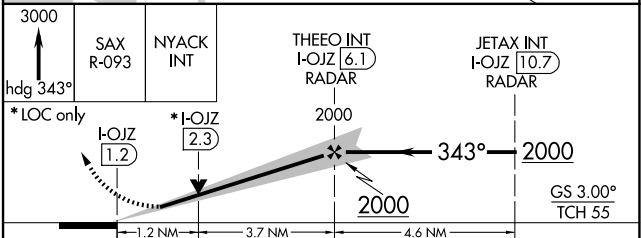
ELEV 439	D	TDZE 401
-----------------	----------	-----------------



REIL Rws 11 and 34 **Ⓢ**
 HIRL Rwy 16-34 **Ⓢ**
 MIRL Rwy 11-29 **Ⓢ**
 TDZ/CL Rwy 16 **Ⓢ**

FAF to MAP 4.9 NM

Knots	60	90	120	150	180
Min:Sec	4:54	3:16	2:27	1:58	1:38



CATEGORY	A	B	C	D
S-ILS 34	742/60		341 (400-1¼)	
S-LOC 34	800/55	399 (400-1)	800/60	399 (400-1¼)
Ⓢ CIRCLING	980-1	541 (600-1)	1080-1¾ 641 (700-1¾)	1200-2½ 761 (800-2½)

NE-2, 23 JAN 2025 to 20 FEB 2025

NE-2, 23 JAN 2025 to 20 FEB 2025