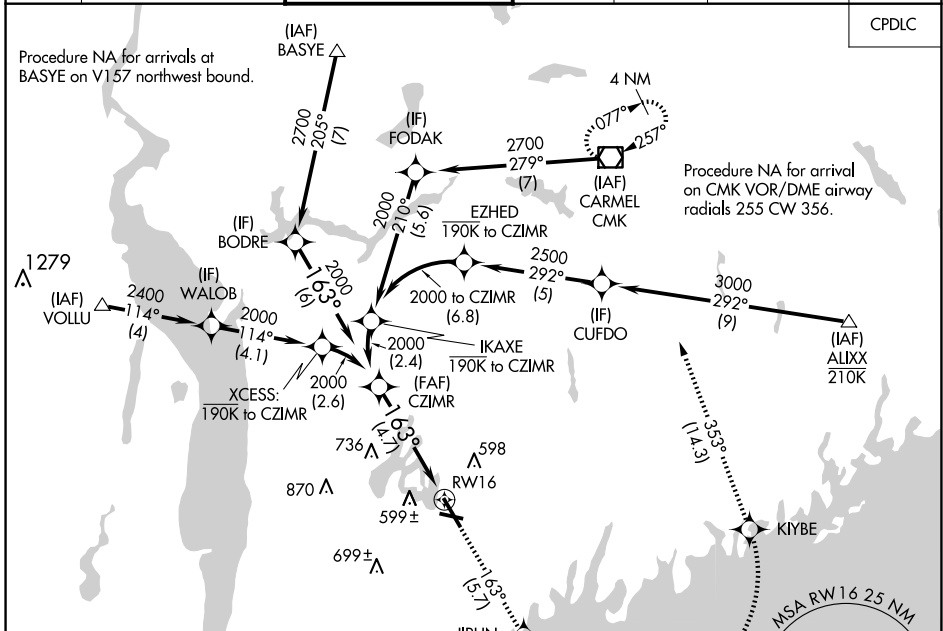


APP CRS	Rwy ldg	<b>6549</b>
<b>163°</b>	TDZE	<b>439</b>
	Apt Elev	<b>439</b>

# RNAV (RNP) Z RWY 16

WESTCHESTER COUNTY (HPN)

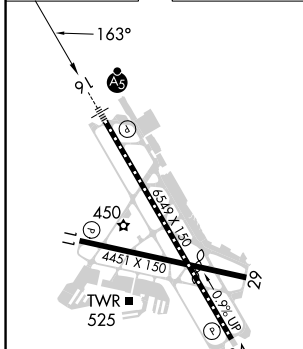
RNP AR APCH - GPS.		MALSR	MISSED APPROACH: Climb to 3000 on track 163° to JIRUN, left turn to KIYBE, then track 353° to CMK VOR/DME and hold.						
For uncompensated Baro-VNAV systems, procedure NA below -14°C or above 54°C.			D-ATIS	NEW YORK APP CON	WESTCHESTER TOWER ★	GND CON	CLNC DEL	CLNC DEL	UNICOM
<b>133.8</b>	<b>120.8 126.4 257.65</b>	<b>118.575 (CTAF) 284.65</b>				<b>121.825</b>	<b>127.25</b>	<b>126.4</b> (when twr closed)	<b>122.95</b>



NE-2, 23 JAN 2025 to 20 FEB 2025

NE-2, 23 JAN 2025 to 20 FEB 2025

ELEV	<b>439</b>	TDZE	<b>439</b>
------	------------	------	------------

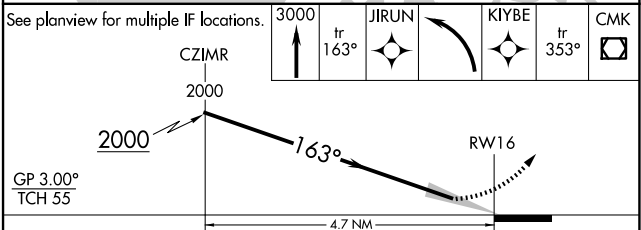


REIL Rwy 11 and 34

HIRL Rwy 16-34

MIRL Rwy 11-29

TDZ/CL Rwy 16



CATEGORY	A	B	C	D
RNP 0.15 DA		826/35	387 (400-5/8)	
RNP 0.30 DA		950/55	511 (600-1)	

**AUTHORIZATION REQUIRED**